

## **NBTT Meeting Notes: Management & Content Team Portland, January 8-9, 2001**

**Attendees:** Darla Potter, WDEQ; Carl Gossard, BLM; Pete Lahm, FS; Jim Russell, FS; Sam Sandberg, FS Fire Research; Mike Ziolko, Oregon Dept. of Forestry; Mark Fitch, AZDEQ; Rebecca Reynolds, NBTT Consultant/Facilitator.

### **Policy Maker Workshop**

#### OUTCOMES DISCUSSION

- Identify controversial issues behind the classification criteria for the PM Wkshp participants to work with and resolve if possible. See if they can come closer to agreeing on classifications.
- Policy Implications/Problems with using the tree as it stands after the SS Wkshp
- PM Workshop is a contingency session based on results of SS Wkshp, which would fall in a spectrum:
  - No agreement/consensus on concept that anything human-ignited could be natural
  - Probably End Up Here (somewhere in the middle)
  - Use/Modify Tree at SS Wkshp and move forward to PM
- If no agreement/consensus on concept of what we have put forward in assumptions/definitions/tree – will probably have to put the PM Wkshp on hold to have enough time to regroup.
- However, the most likely anticipated outcome of the SS Wkshp is toward the Use/Modify Tree end of the spectrum.

#### SPECIFICS REGARDING PROBABLE DISCUSSIONS

- Man-made (Ag & Wildland & Tribal) = Anthropogenic “Tribal = N”, “Ag = N”  
i.e., rejection of RHR preamble that some portion of prescribed fire may be natural
  - Existing laws, etc. Restricting Regulations on Ag burning (Ag)
  - State w/ BSMPs, ESMPs, or no SMPs (Ag & Wildland)
- Wildland Fire Use (PNF) = A or N
  - State w/ BSMPs, ESMPs, or no SMP
- Always Part of and Implication
  - Implementation will require \$, time, man-power, change in legislation

## DRAFT AGENDA

March 15, 2001, 8:00 a.m. – 4:00 p.m. MST  
Fiesta Inn, Tempe, Arizona

		[Potential Speaker]
I. Welcome	8:00 – 8:15	Pete, USDA FS FEJF Co-Chair
II. Current Application of Fire as driven by “Policy” (Address: Ag, Wildland, Tribal)	8:15 – 8:45	[Stephen Pyne, Ph.D.]
III. Current Application of Air Quality Regulation as driven by Air Quality Policy (Address: Ag, Wildland, Tribal)	8:45 – 9:15	[John Seitz or Lydia Wegman]
IV. NBTT SS Workshop Design/Assumptions product → Monitoring Task Team/FEJF/WRAP	9:15 – 9:45	NBTT Co-Chair
V. SS Workshop Results & Major Highlights (Note: NBTT needs to filter for what is “major”: include both issues of agreement and contention in the following areas:)	9:45 – 10:15	David Sandberg, Ph.D.
a. Self-Interest/Equity		
b. Not accepting NBTT’s interpretation of the RHR		
c. Different conclusions re: the Decision Tree		
i. Criteria		
ii. Classifications		
iii. Significance		
VI. Break	10:15 – 10:30	
VII. First Two Issues*	10:30 – 12:00	Moderator
VIII. Lunch	12:00 – 1:00	(Provided)
IX. Last 2-3 Issues* (plus 15 minute break)	1:00 – 3:45	Moderator
X. Close	3:45 – 4:00	Carl Gossard

\*Each Issue (60 minutes per issue)

Work on Issues Identified Above (obtain their feedback, comments, policy implications/problems and hopefully come to resolution on the issues)

25 min PM

10 min Open Comment (Staff)

10 min Caucus (break)

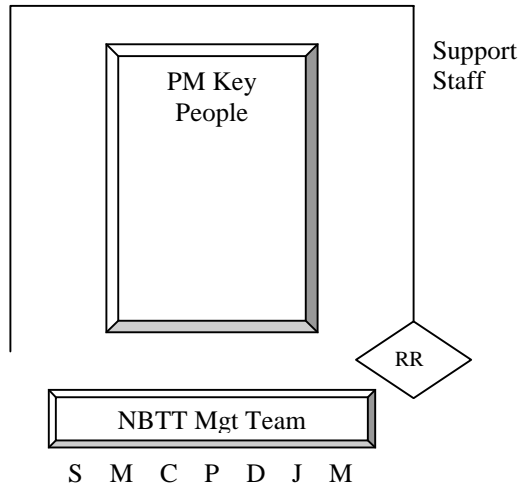
15 min PM Conclusion

## PM WORKSHOP PARTICIPANTS

Who and How Many?

Center Table (#) Strategic Placement: who sits next to whom

Support Staff (#)



Presentation at workshop - One person presenting (has to give up stakeholder position to maintain neutrality and come to resolution), other NBTT Mgt Team support members in certain area.

Outcomes - Narrative statements, relative to the significant issues, that can be passed on to the AMRF & other forums.

Pre-work communication to Policy Makers: They are representing a community at large (their stakeholder group) and should come prepared to discuss, share feedback and comments, identify policy implications/problems and hopefully come to resolution on Senior Staff Workshop issues. "What are the implications of these # (4-6 assumed for now) issues from your program/industry/Tribe/etc.?" Result: "Identifying/fleshing out issues/policy implications."  
NOTE to NBTT: PHRASE EVERY ISSUE AS A QUESTION

*Reasons(scribes will track and note at SS Wkshp)*

1. *Self Interest and/or Equity*
2. *Significance*
3. *Not accepting the interpretation of the RHR*
4. *Different Conclusions (accept basis)*
  - a. *Criterion*
  - b. *Classifications*
  - c. *Significance*

## **Senior Staff Workshop**

### PARTICIPANT SURVEY

TOP 5 Significant Issues (assumptions, definitions, decision tree methodology, specific box on decision tree)

Adequate pre-work; what else could we have included to help you prepare?

Was the background information on the role of fire helpful? Does this section need to be included at the PM Wkshp and what else do you think it would be appropriate to present?

Rebecca will prepare a draft for Darla, Pete & Carl to review.

### NBTT SCHEDULE & ASSIGNMENTS

Jan 26 – Post Wkshp Mtg - Review Trees, Identify 10 most significant areas to be discussed by NBTT at Feb 5/6 Mtg to decide on 4/5 Issues to take to PM Wkshp, Review PM Wkshp Agenda.

Feb 2 – Report Back Compilation & Background comments for 10 most significant areas (Rebecca, Carl & Mike to review), Draft Agenda PM Wkshp, Draft Accept Ltr & Draft Decline Ltr, List of PM nominees per conference call, e-mail to NBTT to review for Feb 5/6.

Feb 2 – Conf Call 10 am MST – Darla, Carl, Pete. Finalize PM Participants (& Support Staff)

Feb 5/6 – Review 10 Issues & Pick top 4, Phrase top 4 Issues (in question form), Feedback on Report Back Compilation, Decide on Info to Present at Mar 15 Wkshp, Finalize Agenda, Agree on PM Participants (& Support Staff), Accept Letter (PM) & Decline Nomination Letter for PM nominees – include list of Accepted PM nominees (mini breakouts at NBTT mtg to handle this work?).

Feb 7 – Notify PM Participants (& Support Staff), accept or decline – Send Logistics & Agenda

Feb 13 – Report Back Compilation, Phrase for top 4 Issues, Agenda, PM Participants (& Support Staff): Deadline (FEJF & NBTT review – 1 wk)

Feb 21/22 – FEJF Mtg, Las Vegas (Carl – 2 hr briefing, Darla cannot attend)

Feb 26 – Finalize Pre-Work Matl (report back compilation, phrasing for top 4 issues, agenda, PM list).

Feb 26 – Send out Report Back Compilation to SS Wkshp Participants.

Feb 28 – Fiesta Inn Room Block Cut-Off

Mar 1 – Send PM Wkshp Pre-Work

Mar 14 – Pre Wkshp Mtg

Mar 15 – PM Wkshp

Mar 16 – Post Wkshp Mtg

Apr – Complete Report SS & PM Wkshps (includes Exec Summary), Draft to FEJF & NBTT to Review (2 wks)

Apr – Report SS & PM Wkshps send to all Wkshp participants

#### ASSIGNMENTS

Carl – PM Workshop Nominee List

Rebecca – Survey Draft

Rebecca – Agenda PM Wkshp

Rebecca – Agenda Feb Mtg

Carl – Draft Accept & Decline Letters

Rebecca – Report Back Compilation

Rebecca – Top 10 Issues (Jan 26 mtg notes)

Carl & Mike – review Top 10 Issues once drafted by Rebecca

Darla/Rebecca – Logistics for PM Wkshp