

## I. Update Session

- Vacancies/Membership Issues
  - Vacancy for Tribal Representative to replace Darrell Russell (should have some agricultural experience).
  - New Technical Oversight Committee Liaisons (Mike George – ADEQ or Rich Fisher – USDA, FS).
  - Looking for academic alternate for Phil Omi with fire and forestry background.

TOC Meeting Report from the end of March.

Topics of discussion:

- Progress of emission inventories
- Section 309 requirements (2018 base case and with controls) for model
- WRAP Jumpstart contract – pulling together inventories from all the forums. REMSAD & CMAQ-Models 3 will be used.
- Fire inventory is due July 15 (including full 1996 wildfire, agricultural, and prescribed fire emissions inventories).
- Target date for 2018 emissions inventory (including projected controls, emission reduction strategies) is Sept. 15.
- Meeting emphasized the importance of getting the ESMP TT going to allow for estimates of emission controls to 2018 emissions inventory.
- Decision that TOC and co-chairs will communicate every three weeks with Forums via conference call to discuss technical issues that have come up.

## II Funding

- Funding made available from BLM to NBTT
- Cost overruns have occurred, but no problems yet
- FY 2001 funding has not been fully allocated to WRAP yet
- Earmarks for ESMP TT and Burning Alternatives TT in FY01

## III Task Team Discussions

### Natural Background Task Team

Policy Maker Workshop (Second Workshop on topic) next week in May, in Tempe, AZ to categorize fire emissions.

Topics:

- Development of Draft Policy and Decision Tree
- Review of Draft Policy and Decision Tree
- Policy Implications and Barriers for Classifications (Anthropogenic/Natural)
- Policy Statements (final modifications)

Dianne Nielson - UT will be keynote speaker.

Attendance = 24 Policy Participants plus 28 Interested Stakeholders

The convergence of opinions is paramount at this workshop, rather than a consensus of the issues.

Comments were received from the draft document. Concerns were raised particularly from the agricultural and tribal interests.

NBTT will be meeting before and after the workshop. NBTT will have a final meeting to compile workshop outcome into a final document, which will then go the FEJF, then to WRAP.

**Preliminary report of workshop outcomes to WRAP in Acoma Tribal center in NM May 23 and 24 by Pete Lahm.** Summary paper from the TT will be due a couple weeks before the meeting for distribution to WRAP members. The paper will not be placed in front of the FEJF for review.

## Wildlands Alternatives Task Team (WATT)

Status of RFP – RFP is complete, although there is currently no Task Team to move it along. California has a map of all biomass users. Interest in topic from WRAP Pollution Prevention Forum. Need to have the information as part of the planning process. Need to revise and get draft to FEJF for formal adoption.

Task Team Participant Issues: Need to develop task team leader, current active members: Bob Palzer – Sierra Club, Brian Mitchell - NPS, Steve Gerritson – Enviro. Seeking a co-chair for this Task Team.

## Non-Burning Management Alternatives on Agricultural Lands

### Report Outline from Paula Field-ERG Consulting

#### Identification of Crops, Burning Activity, and Non-Burning Alternatives for the WRAP States

- I. Introduction
  - Describe overall project scope (15 states, tribal lands)
  - Define “agricultural burning” (crop residue, non-crop burning such as ditch banks, etc.)
  - Goals/objectives of this report
- II. Crops Grown in the WRAP States
  - List and describe sources of data/information (e.g., NASS, state offices and documents, 1997 Census of Agriculture)
  - Explain data collection process, states and counties
  - Summary table of top 10 crops in each state, acres harvested
  - Describe GIS database development and maps
- III. Agricultural Burning Activity in the WRAP States
  - List and describe sources of data/information (FEJF/ECR survey, WESTAR survey, our phone calls, residue yields)
  - Explain data collection/calculation process
  - Summarize results
  - Describe GIS database development and maps
- IV. Non-Burning Alternatives
  - Explain data collection process
  - Applicability of potential alternatives by crop/state. Applicability matrix (Alternatives by crop)

- V. Assessing Impacts of Non-Burning Alternatives
- \$ Define impact types (e.g., environmental, economic, health and safety, agronomic, ecological, social, and political).
  - Outline method(s) to assess impacts of alternatives relative to burning (ARB document, Ag. Almanac, applicability matrix)
  - Characterization of potential impacts (qualitative assessment of each impact)
  - Specific impacts to consider under Task 2
- VI. References
- Include documents and personal communication
- VII. Appendices
- Crop spreadsheets
  - Burn data spreadsheets, if available
  - GIS maps
  - Supplemental information (appropriate or relevant reference works, regulations, other).

Basic Smoke Management Task Team- Diane Riley

Suraj Ahuja - FS has expressed interest in participating in the TT

**Agricultural BSMP Survey- ECR**

Ag survey was completed March 30, draft and is posted on website. ECR has survey sorted by question. Every state and local area responded. Final will be posted after responses to initial draft document are incorporated.

**Wildland Basic Smoke Management Program Report - ECR**

Survey was completed the end of last year, and has been posted. Final report was completed the end of January. Comments have draft report have been incorporated. Final report has been sorted by question.

Report for recommendations –

Outline:

- Regulatory Framework

- Objectives
- Elements
- Examples
- References

**Schedule for recommendations for wildland SMP's for forum review, June 15.**

Integrating Final Ag and wildlands SMP Report may be difficult, and may not be warranted

### **Tribal Smoke Management Programs Survey-ITEP**

273 tribes involved in WRAP region  
156 tribes interviewed/responded

76 said "yes" to burning on reservation  
76 said "no" to burning on reservation

of yes responses,

31 Rangeland  
45 Ag lands  
52 Wildlands

15 tribes responded as having a "formal" SMP in place  
56 tribes responded as not having a formal SMP

Weather was a consideration that was most used when minimizing smoke impacts.

**Draft report on Tribal SMPs will be made available to FEJF for review ASAP, comments will be due back to Diane Riley on May 11.**

SMP Discussion:

Comment supporting development of an integrated, single, report for recommendations for Agricultural, Wildland, and Tribal SMP's.

For tribes with programs, perhaps contacting individual members may facilitate obtaining copies of the formal program. Also contact Rose Lee for assistance.

ITEP will be willing to accept recommendations for the display of information they gathered. (if there is anything the Forum wants to see, ITEP may be willing to manipulate the information a little differently).

Emissions portion of the documents will not be posted.

Recommendations for ESMP will need to be available early in 2002.

Status of Deliverables and Schedules

Understanding that SIP for implementing provisions of 309 is due in 2003  
(This may affect money allocations and other resource allocations, implication for emissions tracking, getting elements of Basic and Enhanced SMPs together, etc.)

### **Action Items (Pete)**

#### **Raise 309 timetable concerns to WESTAR, NAMC, and WRAP**

Critical Path Development (Policy issues, implementation of emission reduction strategies, etc). Emissions Projections.

**\*\* \*\*UPDATE\*\* \*\***

According to Rich Damburg – EPA, RHR 309 establishes the authority, not the implementation schedule, for states and tribes to develop SIPs/Tips in 2003. Implementation after 6 months to one year after SIP/TIP submittal. (309 option does not apply to WA, SD, ND & MT by Rule - Pete)

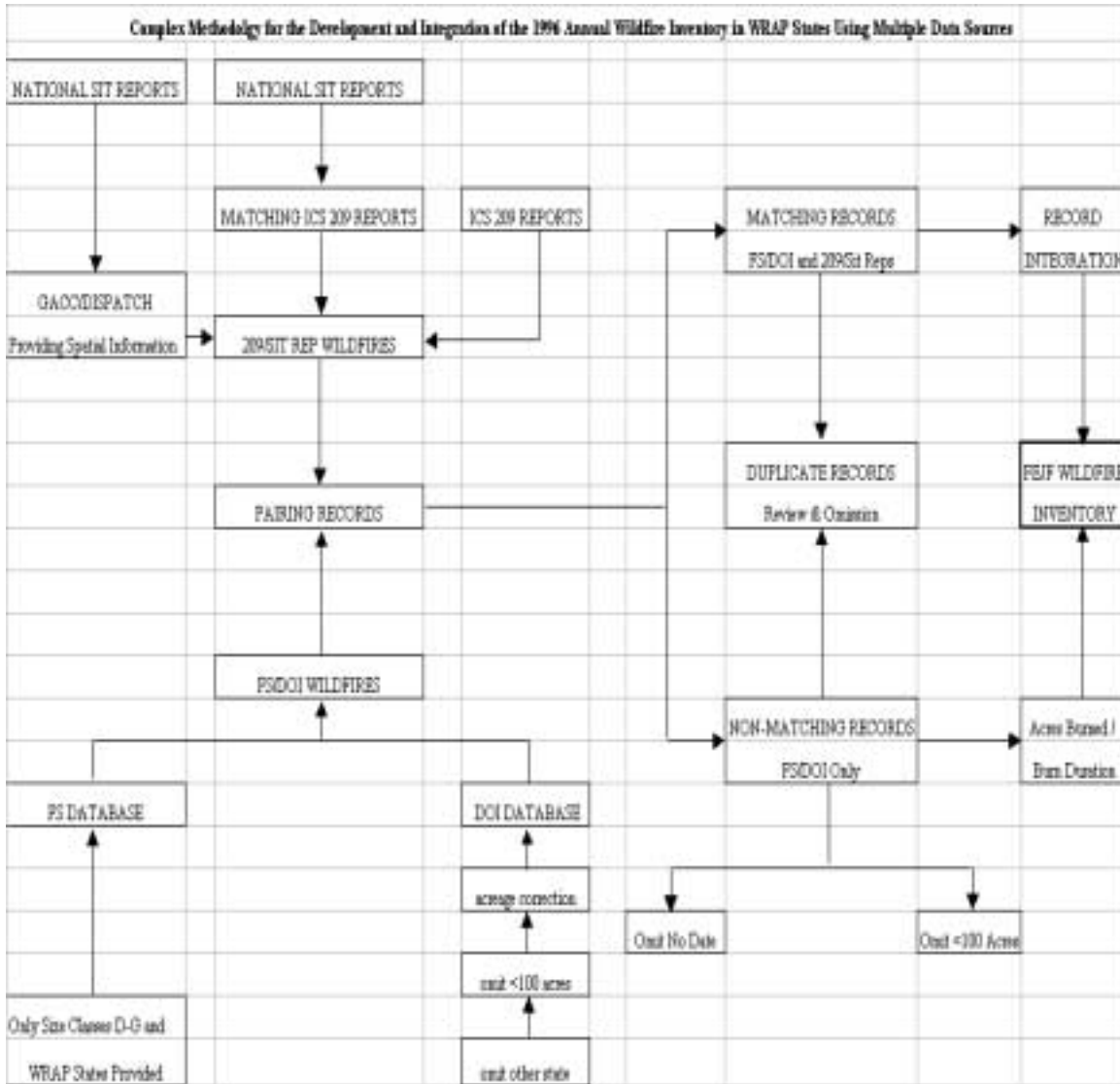
### **Emissions Task Team**

Development of July and Annual daily wildfire inventory.

Data Sources used to construct the inventory:

- ICS-209 Reports
- National Situation Report
- FS Wildfire Inventory
- DOI Wildfire Inventory

The FEJF wildfire inventory was constructed following the methodology outlined in the figure below.



The table below demonstrated the variation in acres burned in each state for all data sources. The Intermountain Fire Sciences Laboratory Fire Occurrence Database acreages are not included as part of the FEJF inventory due to the gross discrepancy in annual acres burned.

Acres were added to the activity information collected from the 209 Report Forms using the FS and DOI databases. The “Acres Added” column in the table below reflects acreages added to each state.

The USDA Statistics publication reflects the number of acres burned in western states during 1996. The publication was used only to demonstrate approximate acreages for comparison to the FEJF Inventory.

Reported Acres Burned Among Various Information Sources For Each WRAP State									
	USDA Statistics	IFSL FODR	FS DR	DOIDR *	FS & DOI **	SIT REP/209	FEJF INVENTORY	ACRES ADDED ***	
AZ	178,940	108,428	121,883	22,829	144,712	185,657	211,642	25,985	
CA	657,278	242,210	391,445	481,078	802,523	640,330	935,278	287,928	
CO	96,730	178	27,971	55,551	83,522	85,483	107,967	22,434	
ID	734,315	104,925	136,674	738,321	874,995	853,685	910,595	96,910	
MT	205,280	24,053	20,450	67,747	88,197	288,364	230,188	11,724	
ND	9,979	460	300	1,951	2,251	0	2,251	2,251	
NM	162,574	0	59,388	74,389	131,777	114,372	171,167	56,795	
NV	266,693	82,447	17,393	687,287	634,680	748,719	857,033	115,314	
OR	545,985	281,527	289,770	321,698	582,468	718,011	774,704	56,693	
SD	13,393	4,621	4,621	7,636	12,257	5,236	13,727	8,491	
UT	257,289	36,906	54,999	436,208	491,207	487,899	734,230	246,331	
WA	48,130	3,807	3,807	133,774	137,561	48,255	150,390	101,135	
WY	512,904	31,450	35,578	224,143	259,721	187,626	282,627	115,001	
Western US	4,270,215	911,812	1,135,279	3,102,611	4,237,890	4,234,677	5,381,659	1,146,982	
July Disc/Report	xx	108,589	128,614	362,433	483,847	695,676	813,407	117,731	
* Total Acres for all Department of Interior Wildfires reduced by an order of magnitude									
** Total acres of matching and non-matching wildfire records (duplicates, <100 acres, no discovery/control date removed)									
*** Total Acres from FSD/DOI wildfires added to SIT Rep/209 acres for each state									
Acres for all Fires <100 Acres have been removed from all data sources									
Matching Fires are those fires that have been associated between FSD/DOI and Sit Rep/209 data sources									
Non-matching Fires are those fires that existed only in the FSD/DOI data sources having a control/discovery date.									

### Development of daily emission rates

Emission Rates have been determined for each incident that can be used to determine daily emission production rates for each pollutant.

### Development of Algorithm for distributing emissions over a 24-hour period

Following the TOC meeting at the end of March in Phoenix, it was necessary to develop a methodology for modeling to determine hourly production and plume height.

Essentially, a wildfire will be treated as a point source, such as a smoke stack from a power plant that emits a specific volume of smoke over an hour, at a specific height, into the atmosphere.

Development of Hourly smoke profile from 24-hour emissions, percent pollutants in plume versus fumigated, and top/bottom of plume (or heat release) -Sam Sandberg approach.

REMSAD and CMAQ/Models 3 will be used. Gail Tonneson (UC RIVERSIDE) is facilitating the long-range Regional Modeling Center approach with MCNC addressing the Jumpstart effort that will use these models to model the dispersion of emissions for the 1996 inventory.

Next Steps for the emissions forum ...

- Development of prescribed fire and agricultural databases for Western United States.
- Follow-up on providing emissions to CIRA for posting when ready.
- Executive summary of results, methodology, data sources, filtering and pairing of records.

**Follow-up with Saraj Ahusa [sahuja/r5\\_mendocino@fs.fed.us](mailto:sahuja/r5_mendocino@fs.fed.us) who may have information by CARB and UC Berkeley on emissions factors and fuel loads in California. Also info available in R5 conformity handbook. Emission factors from PFIRS from Suraj.**

Prescribed Fire Program Assessment Task Team.

Development of Contract that looks at smoke effects in prescribed fire planning  
 How do FLM's assess smoke impacts at each step?  
 Planning considerations versus Operational Considerations?

Perhaps matrix at each planning level  
 Example,

		Burn Plans	Programmatic	Fire Mgmt
FLM	operation			
	planning			
Pvt.	operation			
	planning			

Planning in:

- Burn Plans
- Programmatic Plans (land management planning)
- Fire Management Plan and WFMRB

Steps in Contract

- Assessing smoke management in planning

- Implementation
- Evaluate non-burning alternatives in planning

Criteria for assessing Burn plans

- Actions to minimize emissions
- Evaluating smoke dispersion
- Minimizing smoke exposure
- Air Quality Monitoring

Need list of applicable laws and policies that address air quality for each step of the planning process.

- NEPA Guidance
- EPA's Interim Policy on Prescribed Fires
- Agency Guidance (BIA/FWS/NPS/FS/BLM)
- Agency regulations concerning categorical exclusions
- Regulations for burning on Private lands (State/County regs)

Need list of contacts names/numbers of federal, state, private

#### Public Education and Outreach TT

Development of Brochure and Education/Outreach Materials

Brochure - Brochure has been completed and is available on web

Ed and Outreach Materials - Information has been obtained from other countries on health impacts, need to burn, safety considerations.

Please send materials and/or contacts for information on smoke management and public health to [lbiland@epa.gov](mailto:lbiland@epa.gov)

Announcement Workshop in Seattle – Smoke, Fire, and Human health

Workshop will address Public Education and outreach as one of the topics. See <http://depts.washington.edu/wildfire> for more information.

#### **IV TT Breakout Discussions Recap for FEJF**

Announcements – Next FEFJ Meeting

July 11-12

Rapid City, SD

## Meeting Topics --

- Inventory for Emissions Task Team
- Final Product from NBTT for WRAP
- Draft BSMP Template w/ recommendations
- RFP for Prescribed Fire Assessment
- Agricultural Burning Alternatives Report – Deliverable 1

### Prescribed Fire Planning Assessment TT

New RFP with the including the following considerations.

Combine categories (operational and planning)

Modify criteria for program, project, and programmatic levels

Addition of considerations to programmatic level

Ag has been dropped - is this ok?? \*\*Ask Paula Fields, NRCS\*\*

(Discussion - Ag should be included)

Make sure that contractor has examples of plans including linkages between the operational and planning components of the different types of plans

Guidance documents developed for each agency will be submitted along with the RFP to the contractor - Tim Sexton and Carl Gossard for BLM and NPS, Tribes: Quinalt, Yakama (Rose Lee), WMAT (Molly Pitts), Kevin McKernan, Scott Kuehn and Mike Dykzel for private. Paula Seamon, and the Nature Conservancy

Also, scaling back a little...

1 contact for each FS Region

1 contact for each state for BLM

1 contact for each state

Need to discuss further: complexity of pvt/state/fed guidelines.

Pete will talk to Lebens about guidance documents acquired during WESTAR NEPA Survey.

### Alternatives to Wild land Burning Task Team

Suggestions have been incorporated into RFP

Steve Gerritson - Possible Co-chair

Bob Palzer needs comments from First draft RFP from Pete via email.

## Emissions TT

Emission Factor Table is complete, will be added to the Emissions Inventory for daily emission calculations. Hourly to be determined later after reply from Sam Sandberg who is doing plume rise and hourly dispersion characteristics work.

Development of short synopsis of methodology summary for July 1996 work.

Discussion of Annual 1996 Inventory, but July has precedence at this time.

Discussion of 2018 emission projections and reduction strategies (Due Sept).  
(Fire Cycles, Return Intervals, Projected Budget may be used for projection)

Mike Ziolko will compile the prescribed fire inventory for the TT

\*\*\*\*\*ETT Meeting in Portland at the beginning of June6-7\*\*\*\*\*