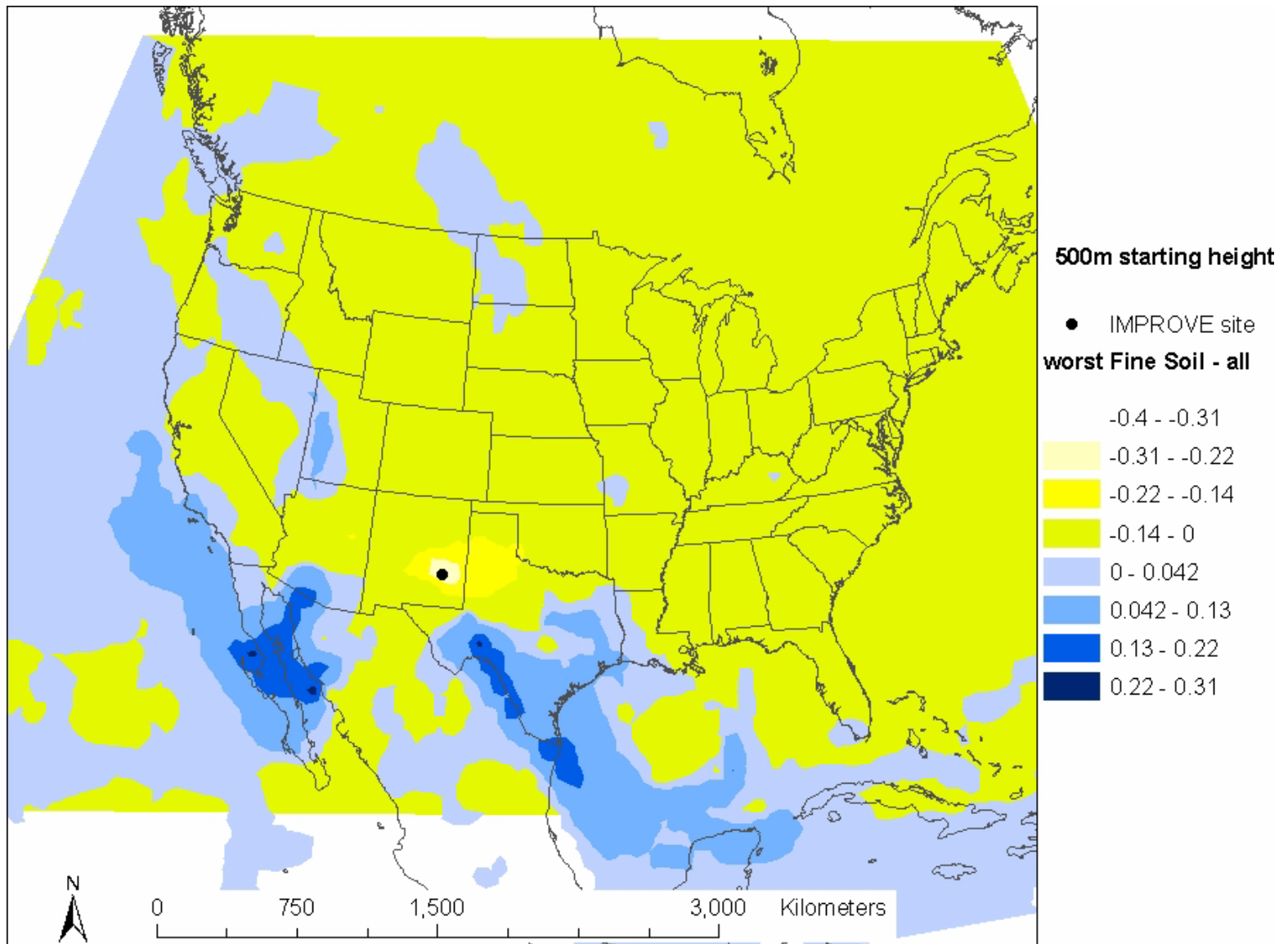
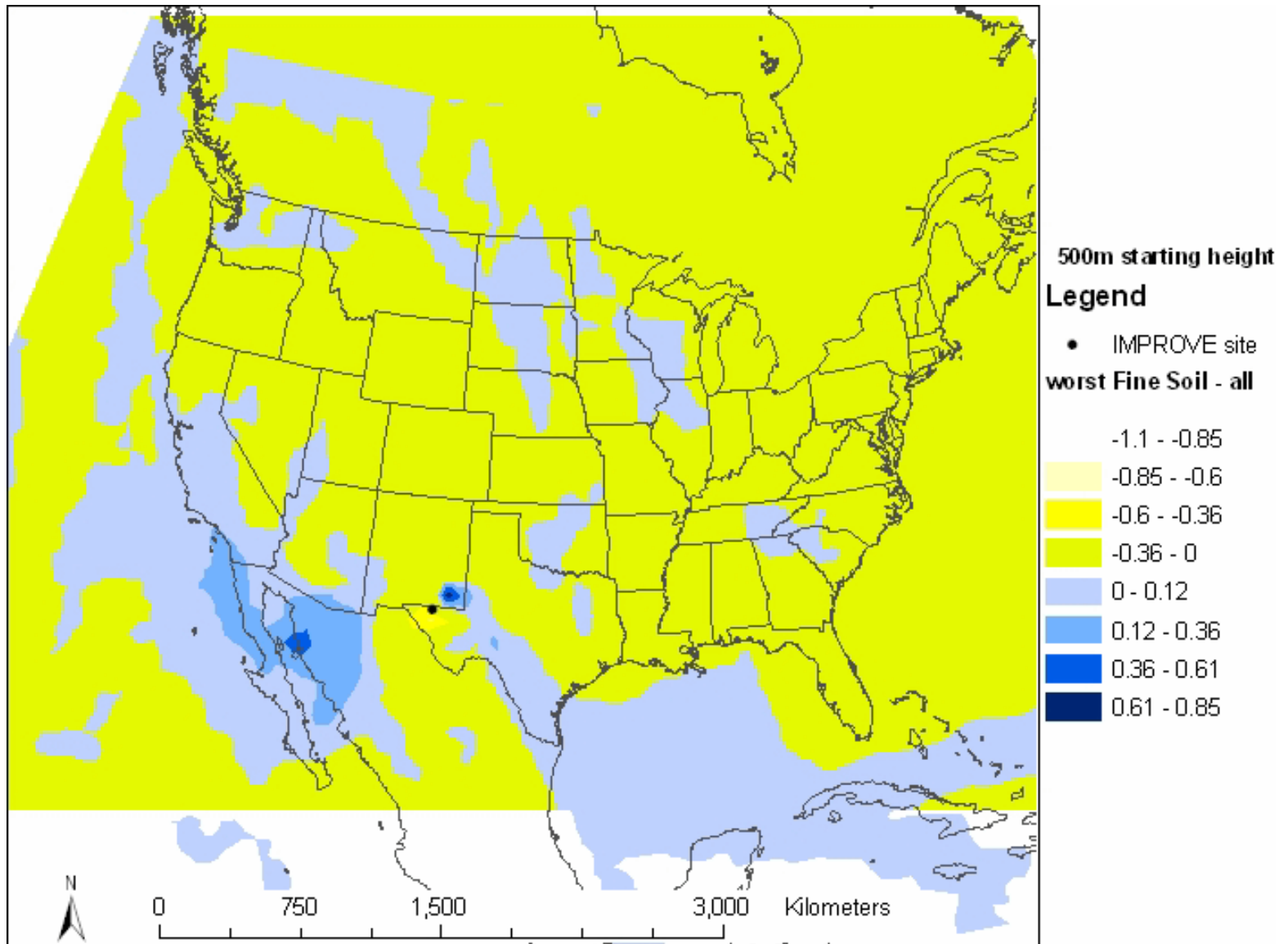


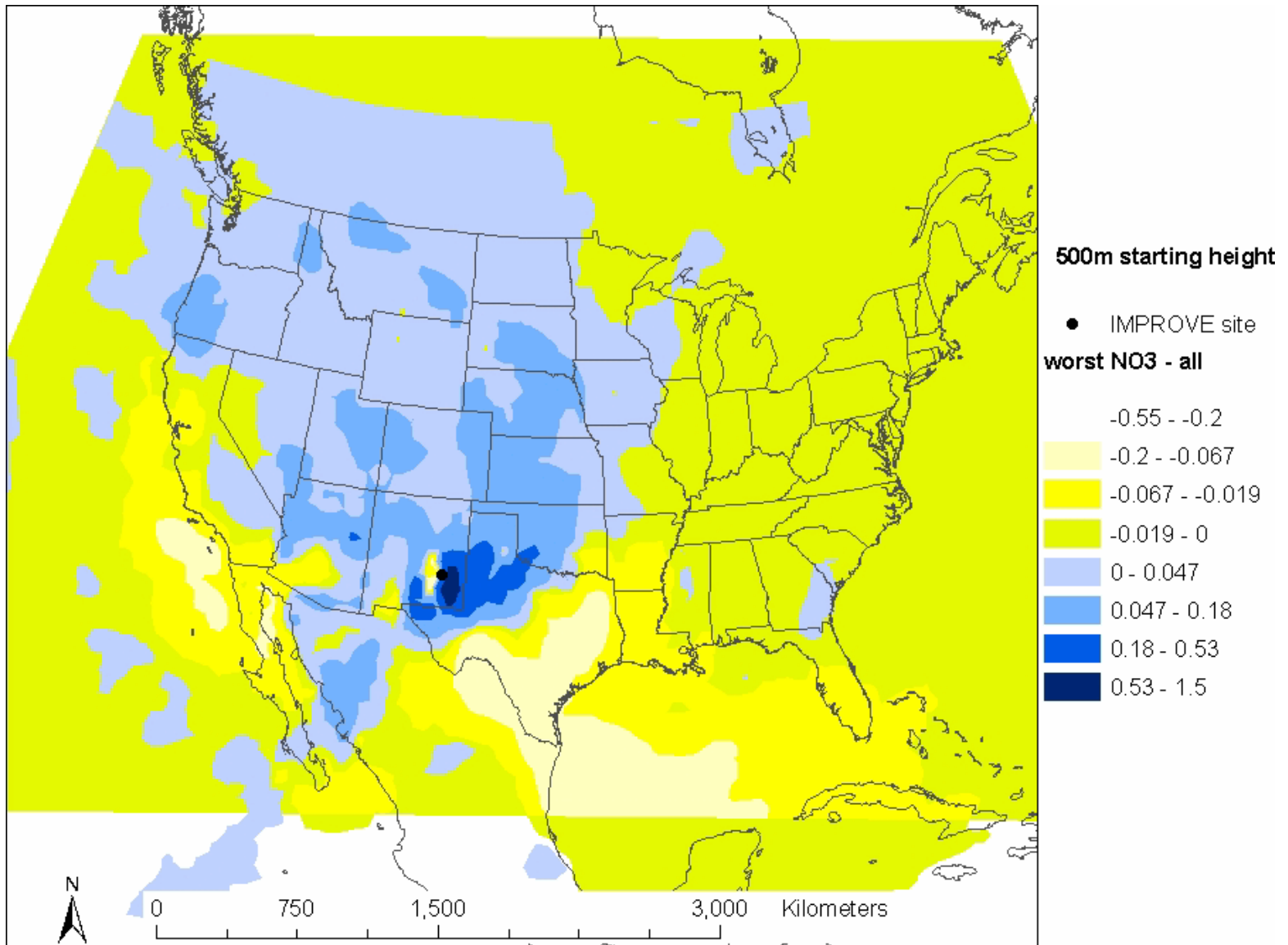
Upwind Regions on Days with High Fine Soil Concentrations Salt Creek (2000-2002)



Upwind Regions on Days with High Fine Soil Concentrations Carlsbad Caverns (2000-2002)



Upwind Regions on Days with High Nitrate Concentrations Salt Creek (2000-2002)



Upwind Regions on Days with High Fine Soil Concentrations Carlsbad Caverns (2000-2002)

