

Appendix E:
Modeling Data for Salt Creek Class I Area







SACR1

Salt Creek, NM

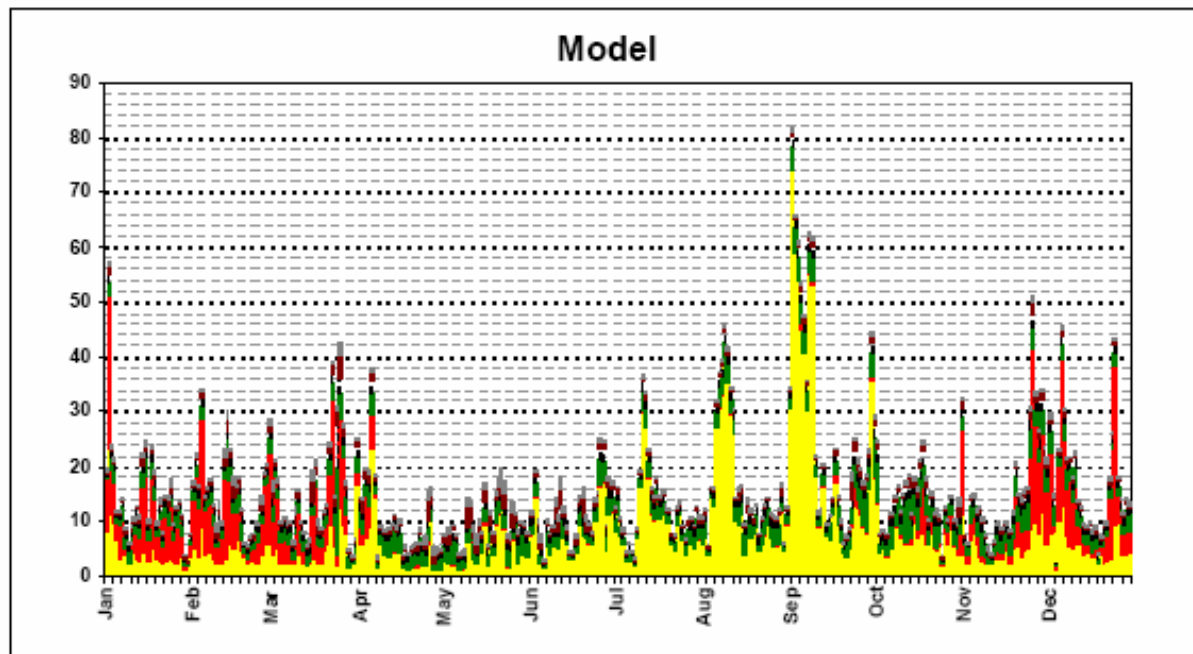
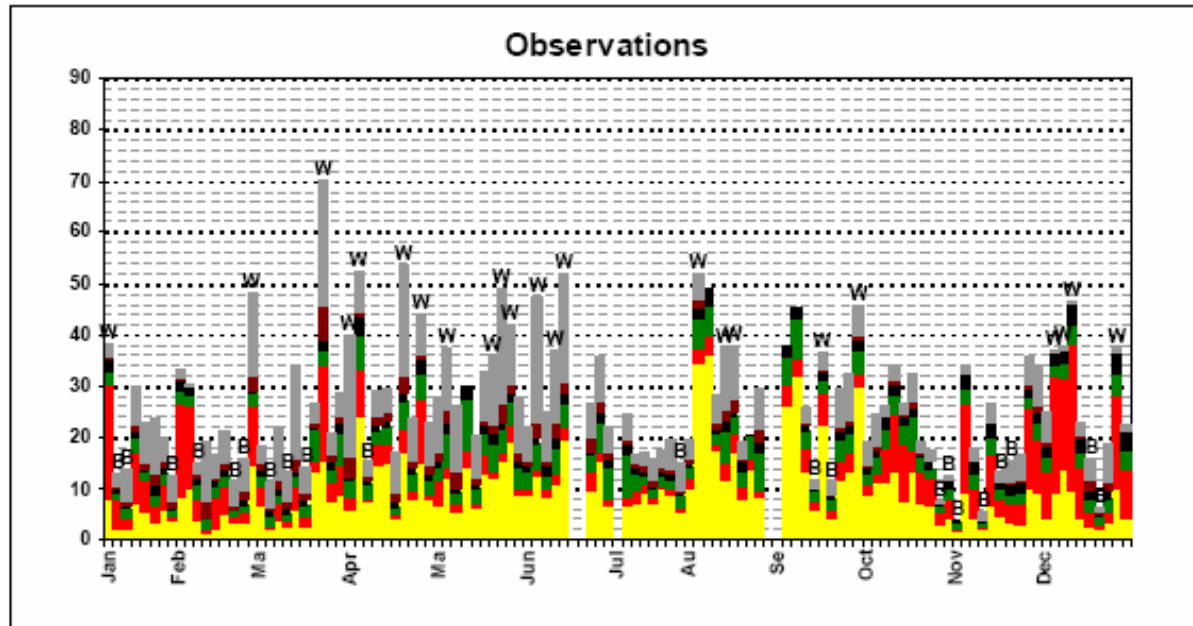
2002 Reconstructed Extinction

Observations (top) vs. CMAQ Model Results (bottom)

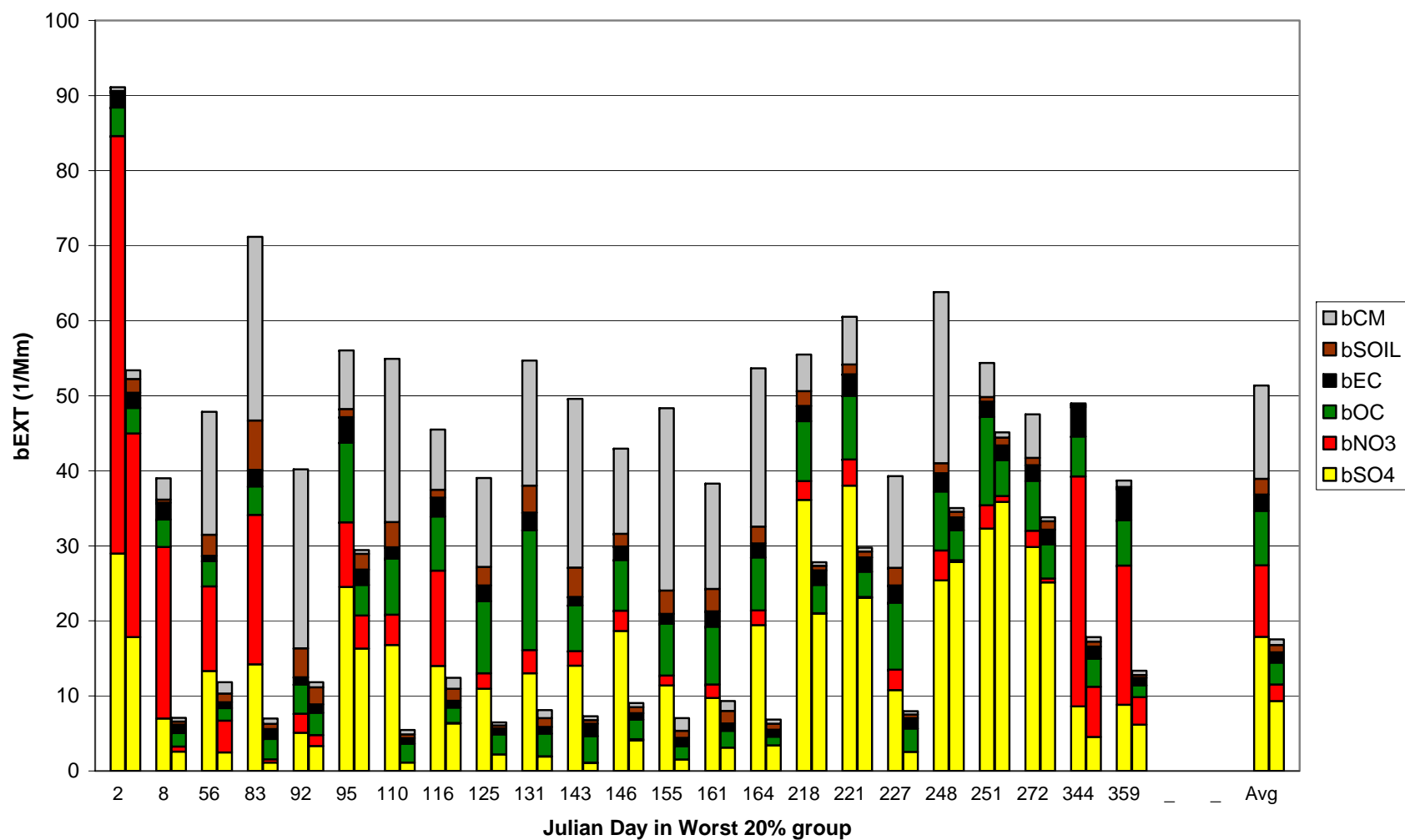
Model Case: 2002 Base02b 36k

-  Coarse Material
-  Soil
-  Elemental Carbon
-  Organic Material
-  Ammonium Nitrate
-  Ammonium Sulfate

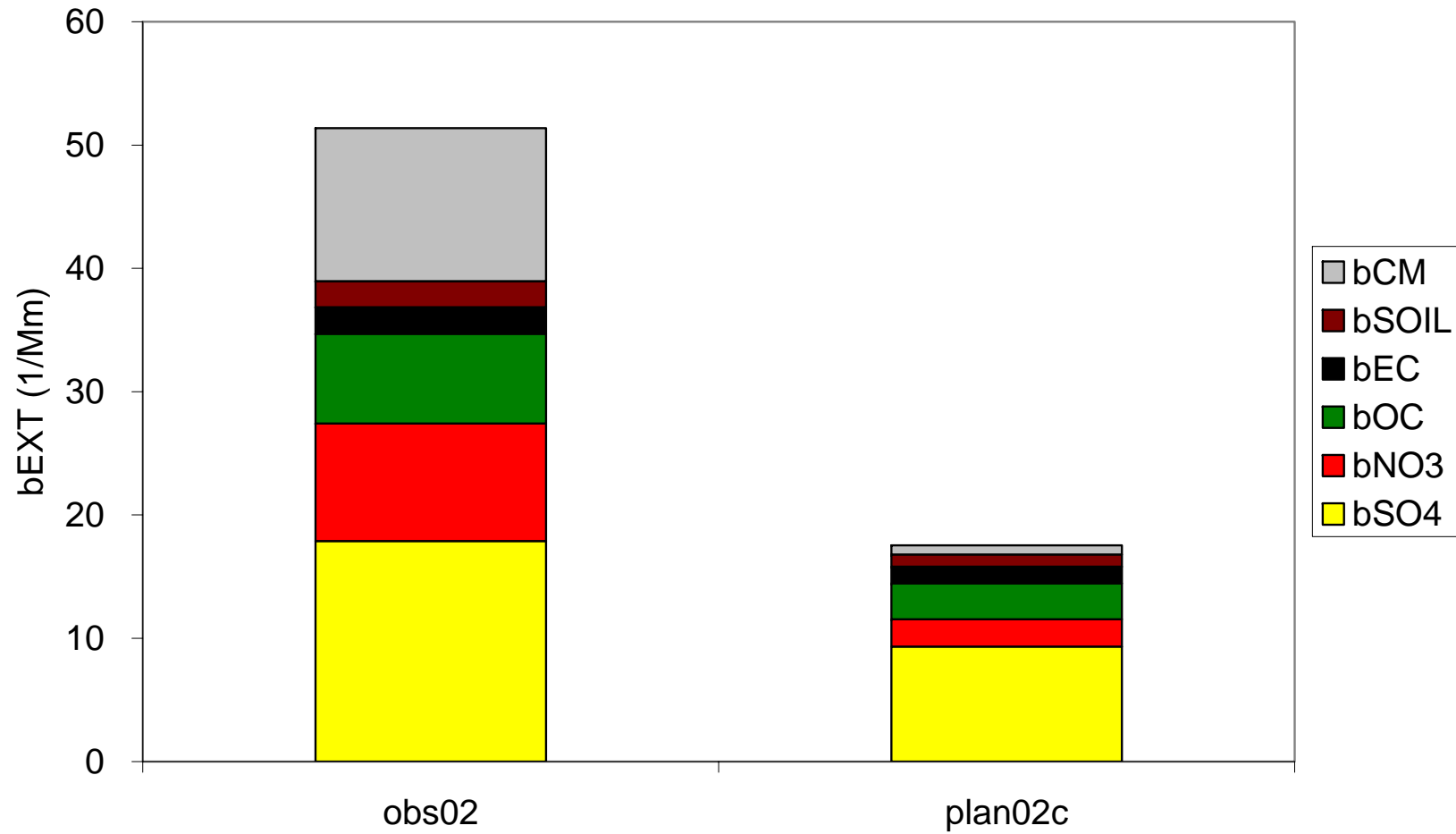
*Excludes Rayleigh Extinction



Worst 20% Obs (left) vs plan02c (right) at SACR1



SACR1 Worst 20%



Bext Response (base18b - plan02c) at SACR1 on Worst 20% Days

