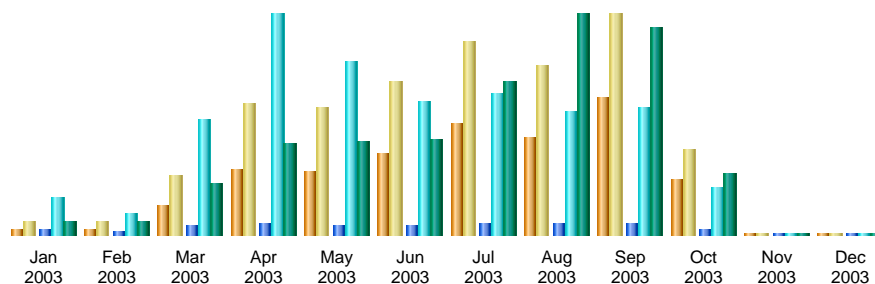


WRAP Website Statistics Report Communications Committee Meeting 10/14/03

Summary of WRAP Web Site Usage (As of 10/10/03)



Month	Unique visitors	Number of visits	Pages	Hits	Bandwidth
Jan 2003	72	208	4,437	39,794	106.49 MB
Feb 2003	93	214	2,920	23,448	98.60 MB
Mar 2003	500	1,003	10,447	126,281	414.47 MB
Apr 2003	1,116	2,232	11,113	240,571	731.26 MB
May 2003	1,070	2,149	10,285	190,074	751.15 MB
Jun 2003	1,364	2,603	10,913	146,041	766.55 MB
Jul 2003	1,886	3,259	12,523	154,418	1.21 GB
Aug 2003	1,650	2,849	11,588	135,401	1.73 GB
Sep 2003	2,313	3,726	12,114	138,931	1.64 GB
Oct 2003	926	1,433	5,119	50,725	500.23 MB
Nov 2003	0	0	0	0	0
Dec 2003	0	0	0	0	0
Total	10,990	19,676	91,459	1,245,684	7.87 GB

Note: The new WRAP Web officially went live on 03/24/03

What Browsers are People Using? (Based on 09/03 usage data)

Browsers		Hits	Percent
	MS Internet Explorer	121,965	87.7%
	Netscape	13,719	9.8
	Unknown	2,325	1.6
	Opera	460	0.3
	Safari	242	0.1
	Konqueror	148	0.1
	Galeon	55	0.0
-	WebCollage (PDA/Phone browser)	8	0.0
-	LibWWW	5	0.0
	Go!Zilla	2	0.0
-	Links	2	0.0

Links from Internet Search Engines

(For the month of 09/03)

17 Different Search Engines	Pages	Percent	Hits	Percent
Google	487	63.4	1,052	64.5
Yahoo	156	20.3	317	19.4
MSN	39	5.0	68	4.1
Ask Jeeves	23	2.9	23	1.4
AOL	19	2.4	32	1.9
AltaVista	13	1.6	67	4.1
Other search engines	13	1.6	18	1.1
Netscape	10	1.3	28	1.7
MetaCrawler	2	0.2	4	0.2
Excite	2	0.2	6	0.3
AllTheWeb	2	0.2	2	0.1
Virgilio	1	0.1	3	0.1
InfoSpace			1	0.0
Hotbot			1	0.0
Google (Images)			5	0.3
Lycos			1	0.0
Search.com			2	0.1

Note: Visits from Search Engine Crawlers account for approx 1.2% of total hits.

For Sept. 03: Length of Visit Duration

Number of Visits: 3,726; Average: 301 s	Number of Visits	Percent
0 s-30 s (Note: 62% of these visits are from search engines)	2,624	70.4
30 s-2 min	319	8.5
2 min-5 min	219	5.8
5 min-15 min	194	5.2
15 min-30 min	137	3.6
30 min-1 hr	140	3.7
1 hr+	93	2.4