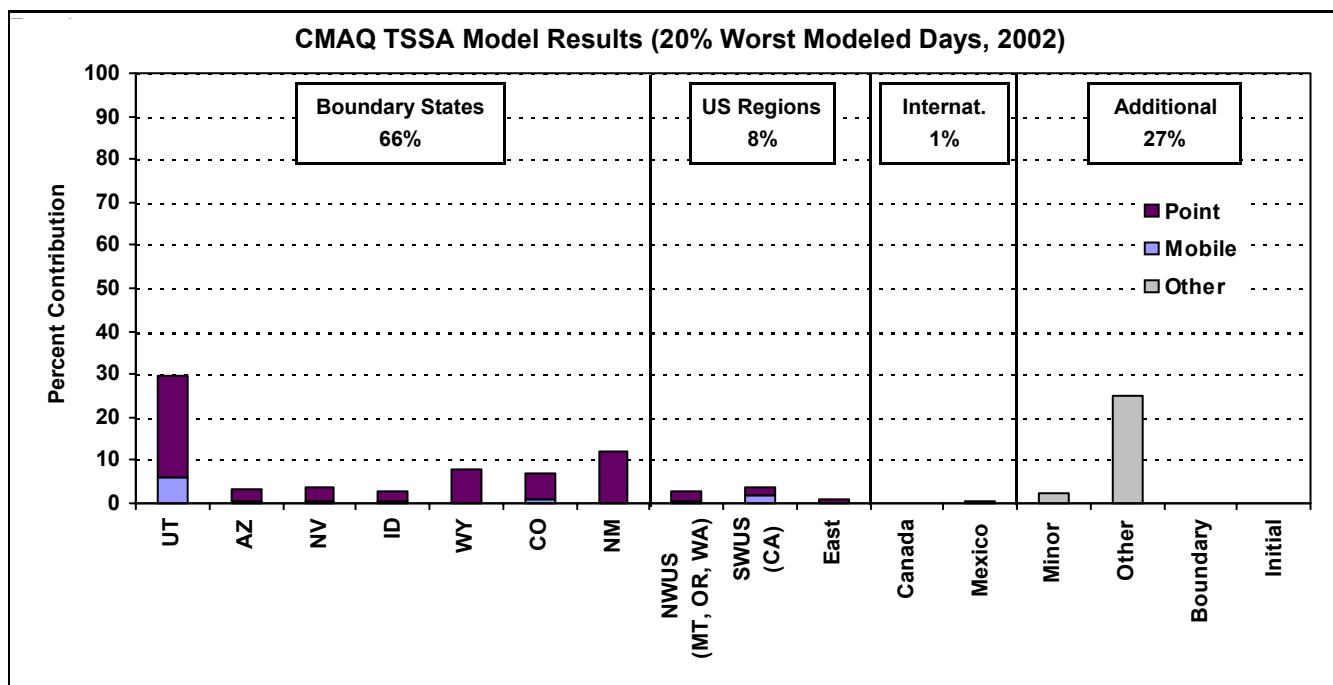
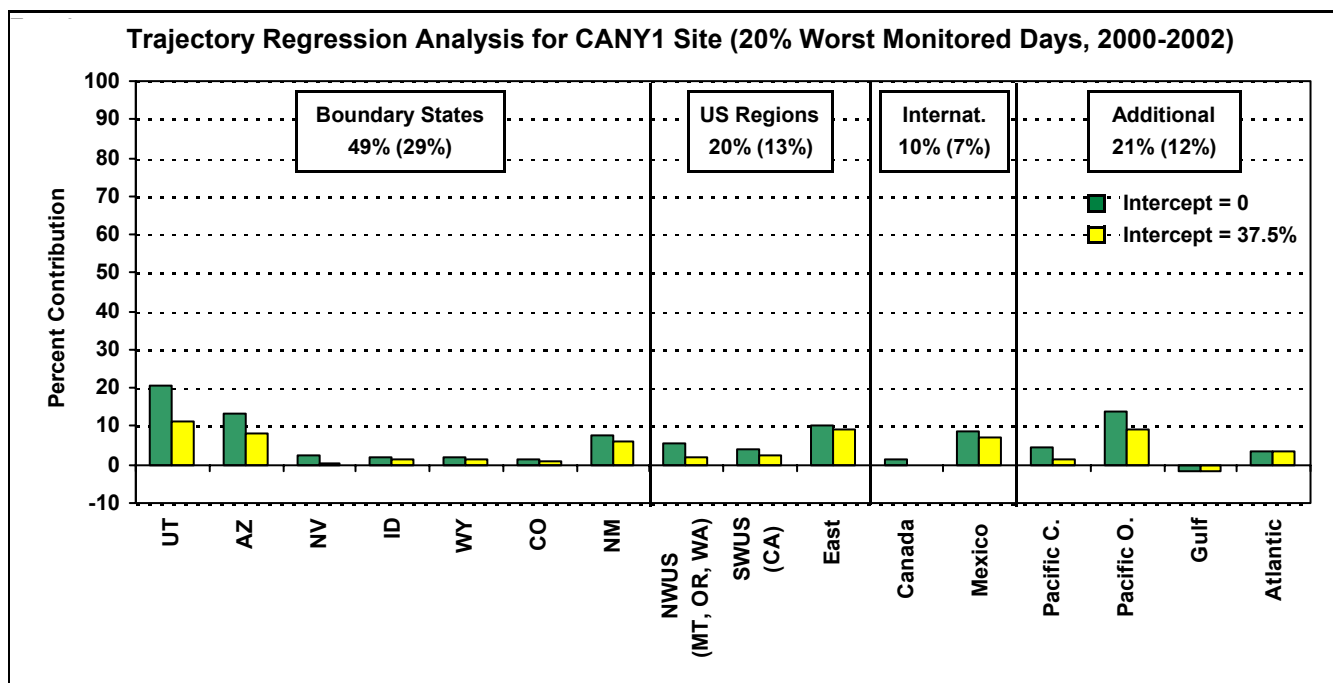


Arches National Park, UT SO4 Source Apportionment Method Comparison

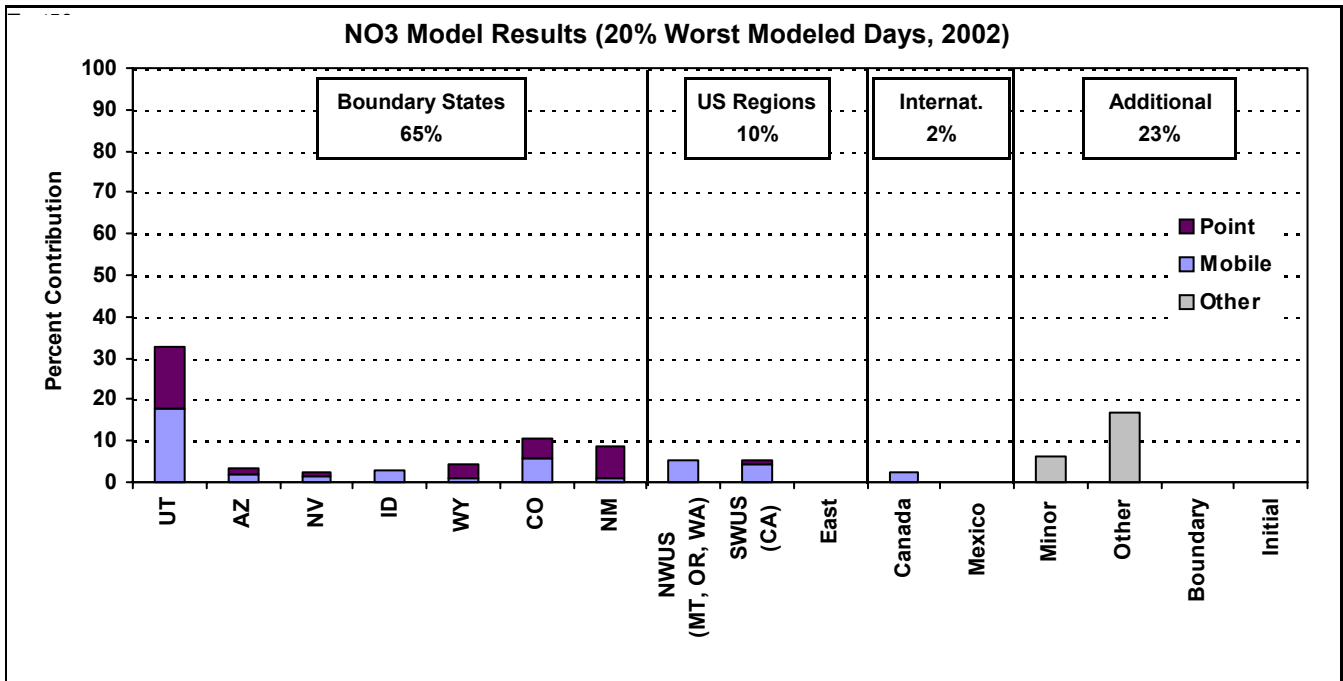
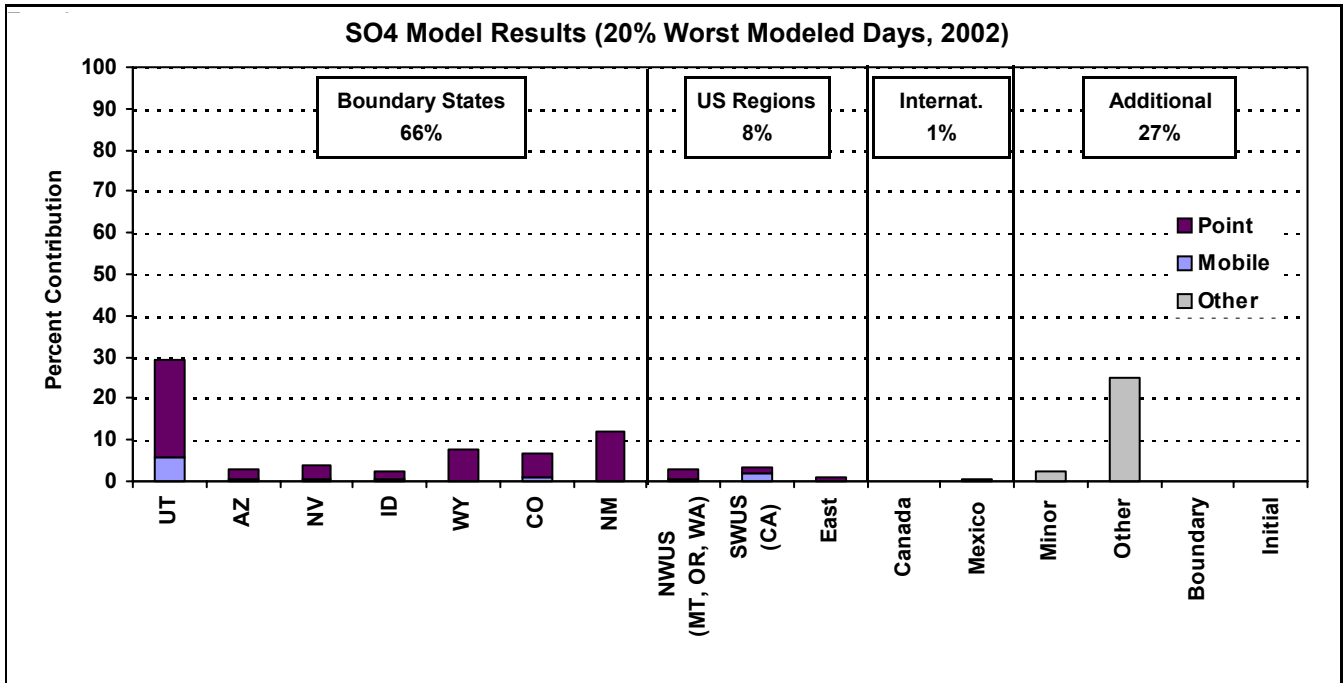


In the CMAQ TSSA analysis, source attribution is defined only for mobile and point source emissions. SO4 not attributed to mobile or points sources is labeled "Other". Emissions not included in the identified categories are grouped as "Minor".



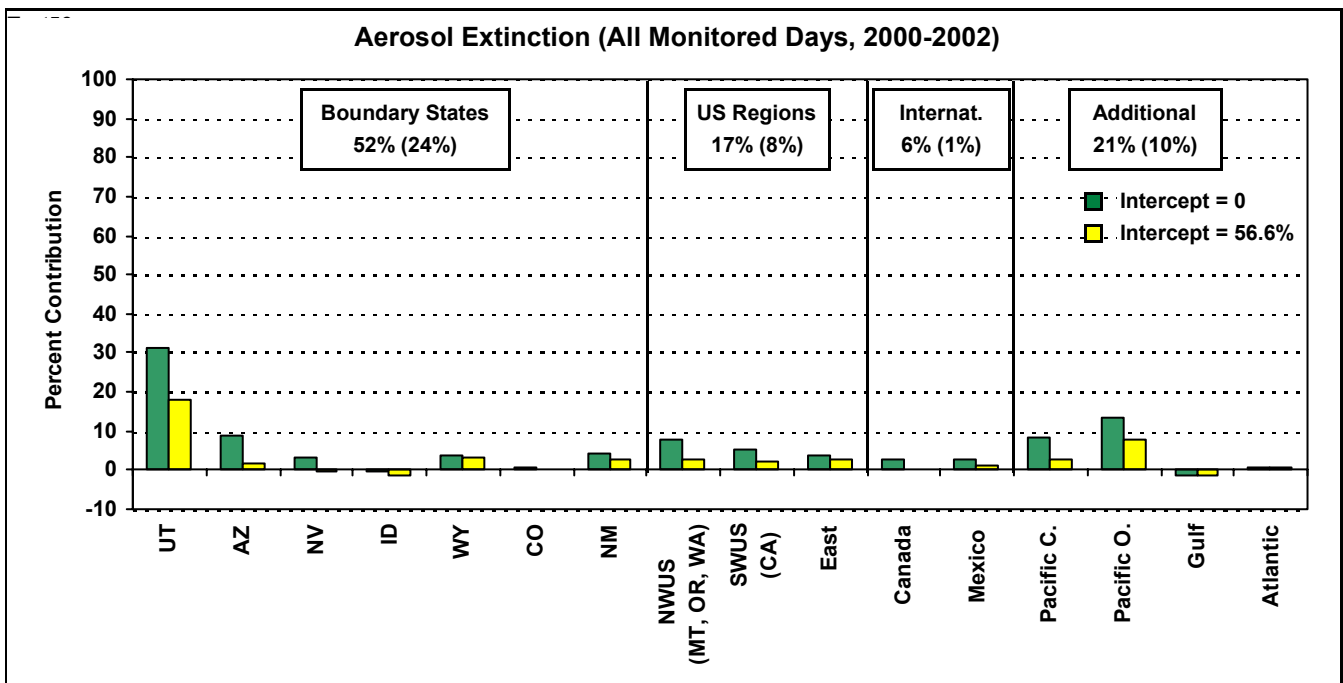
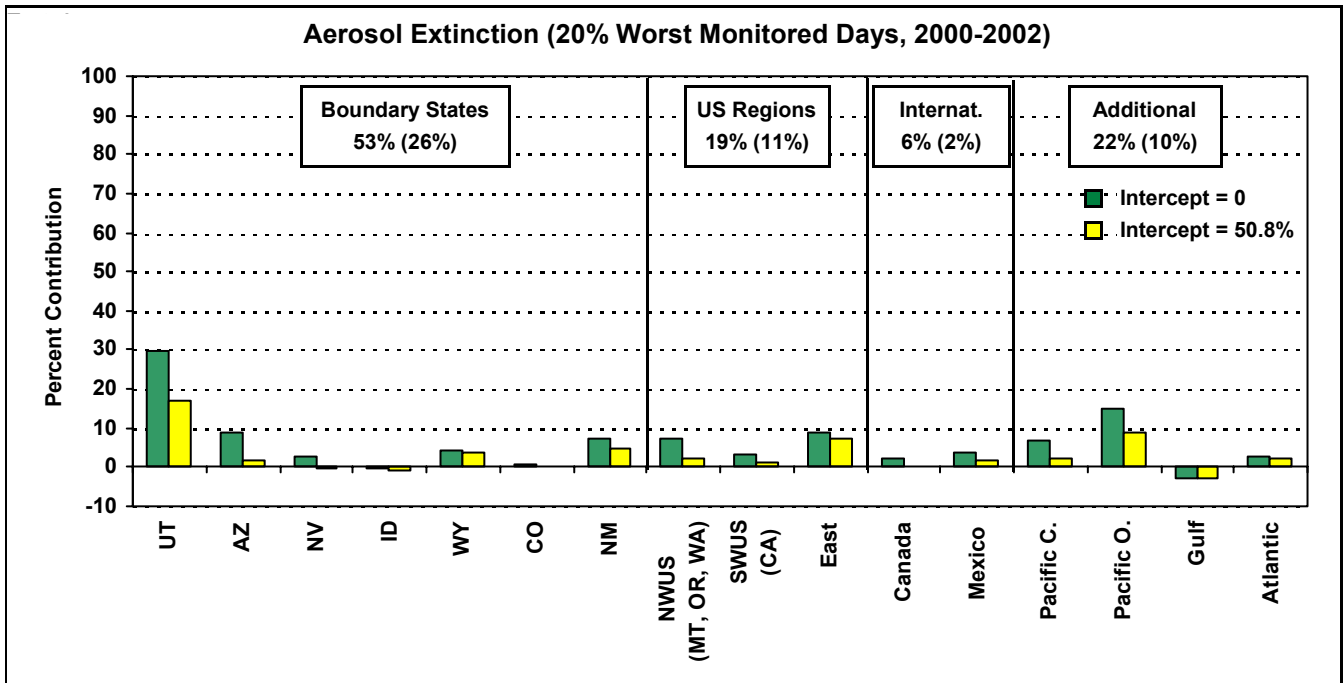
Trajectory regression analysis attributes monitoring results using back trajectory residence times and measured pollutant values. Regional percent sums are indicated with non-zero intercept values in parentheses. Categories in the "Additional" grouping do not directly correspond to categories listed in the CMAQ TSSA

Arches National Park, UT CMAQ TSSA Source Apportionment for SO4 and NO3



In the CMAQ TSSA analysis, source attribution is defined only for mobile and point source emissions. SO4 and NO3 not attributed to mobile or points sources is labeled "Other". Emissions not included in the identified categories are grouped as "Minor".

Arches National Park, UT Trajectory Regression Analysis for CANY1 Sampling Site



Trajectory regression analysis attributes monitoring results using back trajectory residence times and measured pollutant values. Regional percent sums are indicated with non-zero intercept values in parentheses.