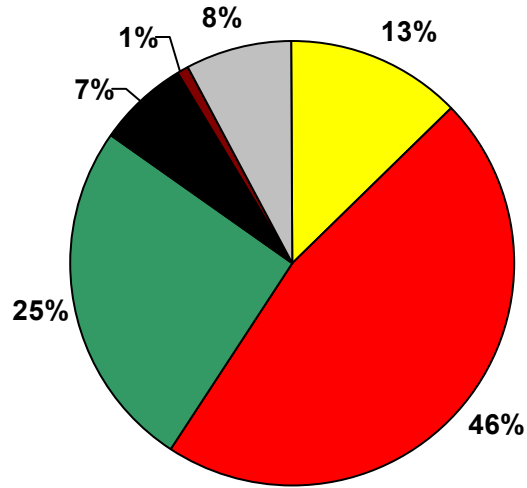


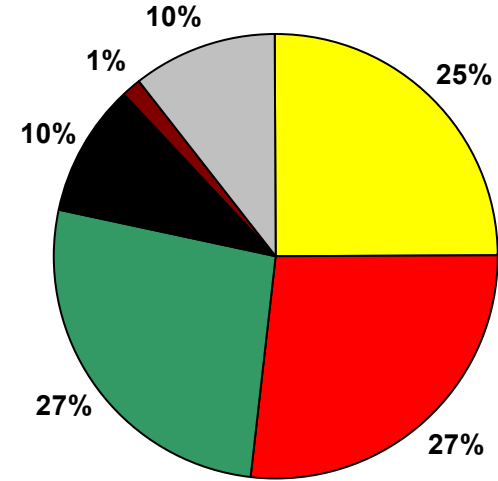
**MONITORING DATA**

**Kings Canyon National Park, CA  
2002 Reconstructed Extinction  
SEQU1 Monitoring Data (every third day)**

**20% Worst Visibility Days**  
Aerosol Extinction\* = 115 Mm-1 (78 to 179 Mm-1)

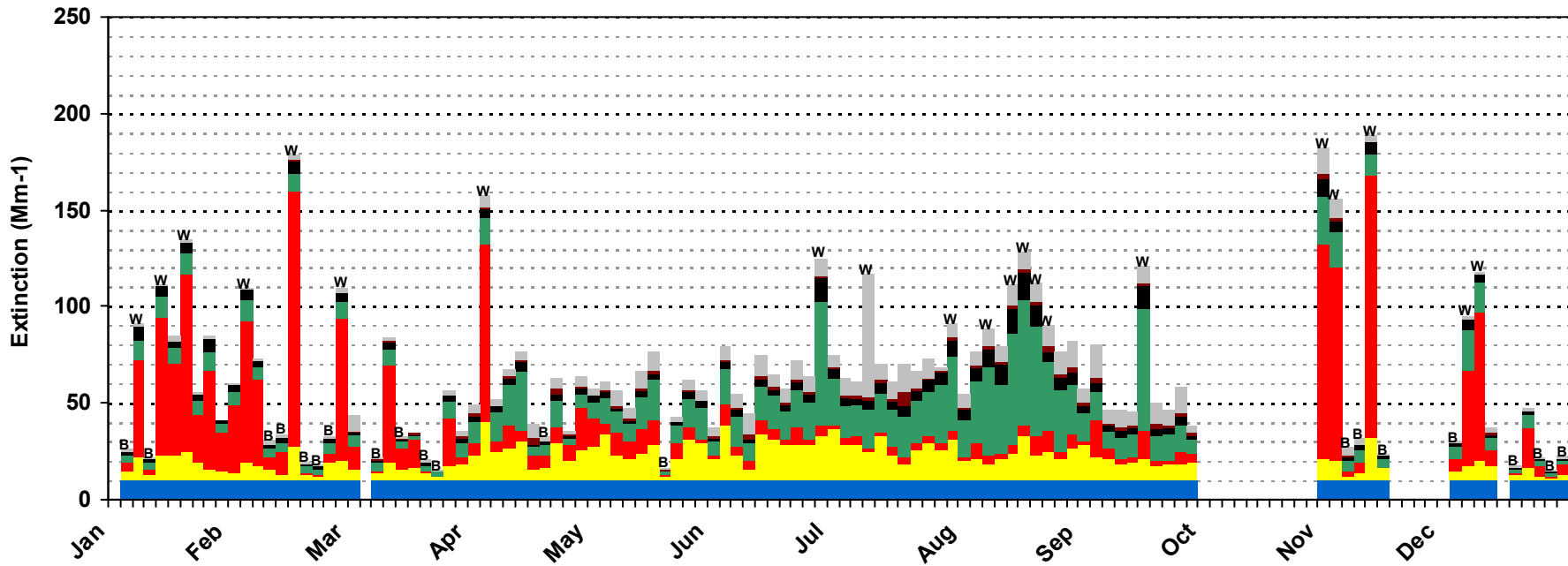


**20% Best Visibility Days**  
Aerosol Extinction\* = 15 Mm-1 (6 to 24 Mm-1)



- Coarse Material
- Soil
- Elemental Carbon
- Organic Material
- Ammonium Nitrate
- Ammonium Sulfate
- Rayleigh

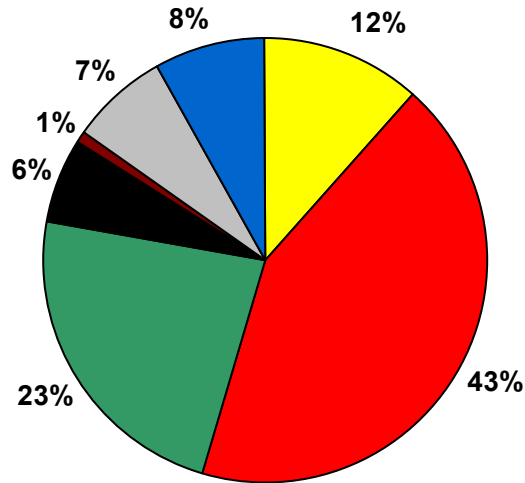
\*Excludes Rayleigh Extinction



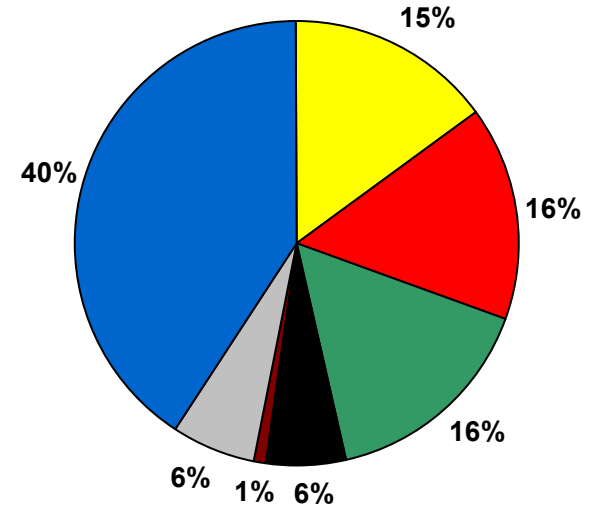
**MONITORING DATA**

**Kings Canyon National Park, CA  
2002 Reconstructed Extinction  
SEQU1 Monitoring Data (every third day)**

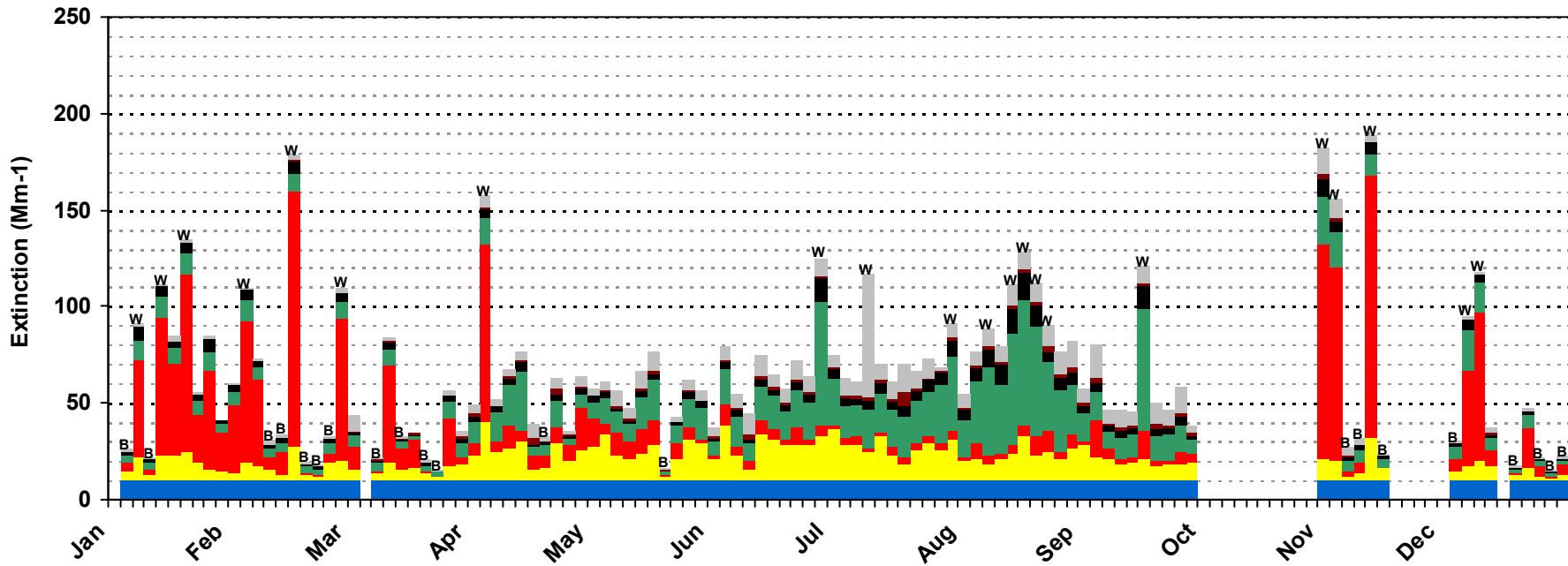
**20% Worst Visibility Days**  
Total Extinction = 125 Mm-1 (88 to 189 Mm-1)



**20% Best Visibility Days**  
Total Extinction = 25 Mm-1 (16 to 34 Mm-1)



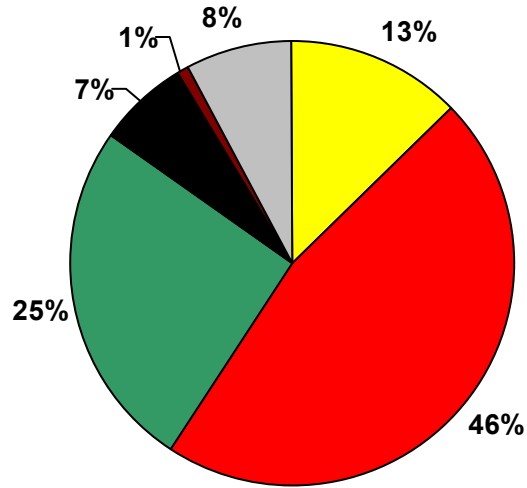
- Coarse Material
- Soil
- Elemental Carbon
- Organic Material
- Ammonium Nitrate
- Ammonium Sulfate
- Rayleigh



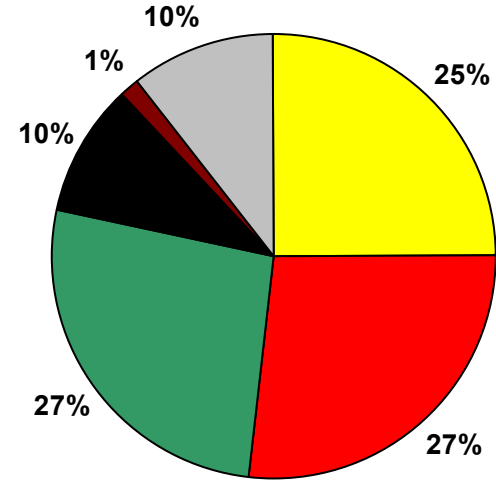
**MONITORING DATA**

**Kings Canyon National Park, CA  
2002 Reconstructed Extinction  
SEQU1 Monitoring Data (every third day)**

**20% Worst Visibility Days**  
Aerosol Extinction\* = 115 Mm-1 (78 to 179 Mm-1)

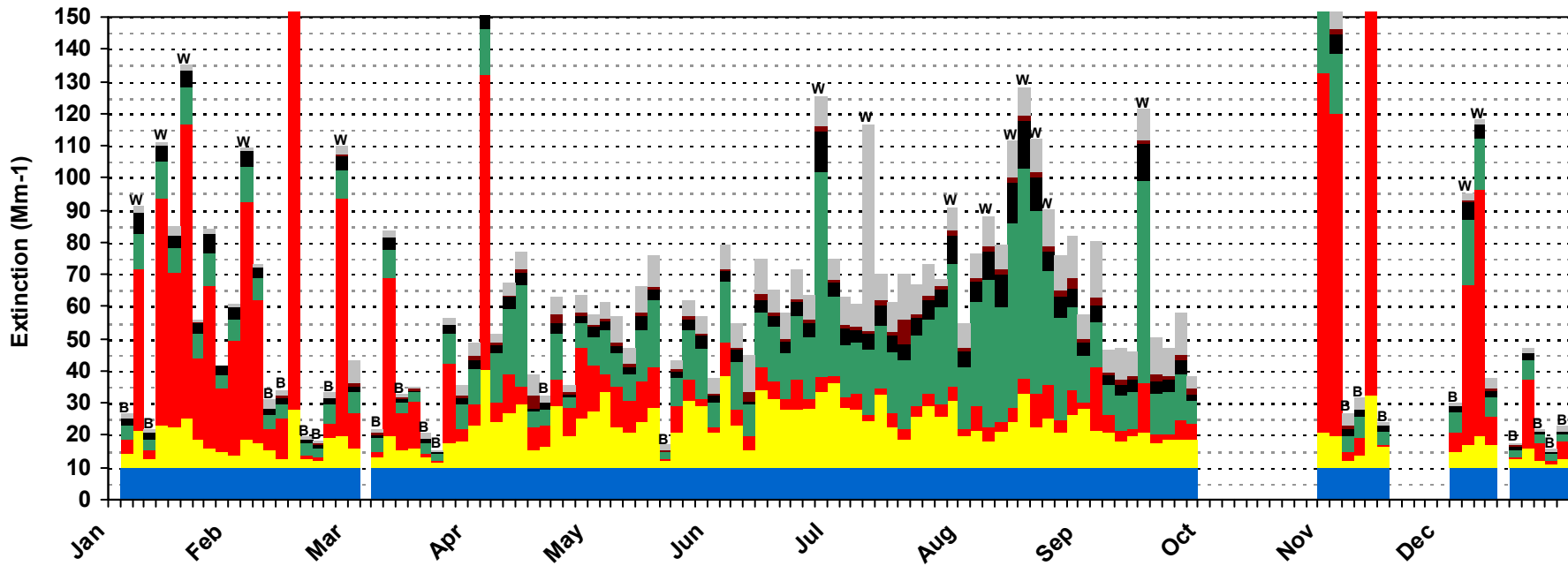


**20% Best Visibility Days**  
Aerosol Extinction\* = 15 Mm-1 (6 to 24 Mm-1)



- Coarse Material
- Soil
- Elemental Carbon
- Organic Material
- Ammonium Nitrate
- Ammonium Sulfate
- Rayleigh

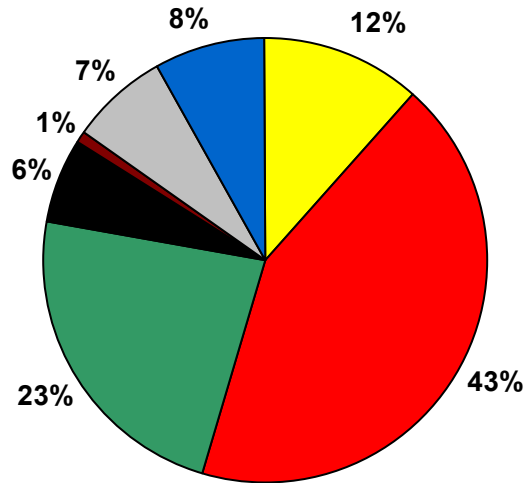
\*Excludes Rayleigh Extinction



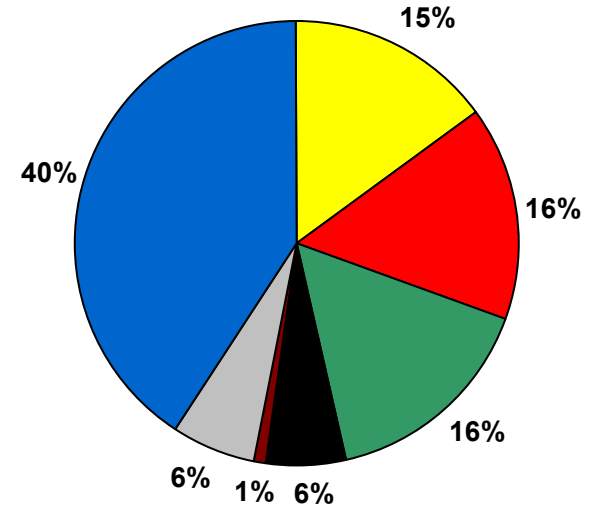
**MONITORING DATA**

**Kings Canyon National Park, CA  
2002 Reconstructed Extinction  
SEQU1 Monitoring Data (every third day)**

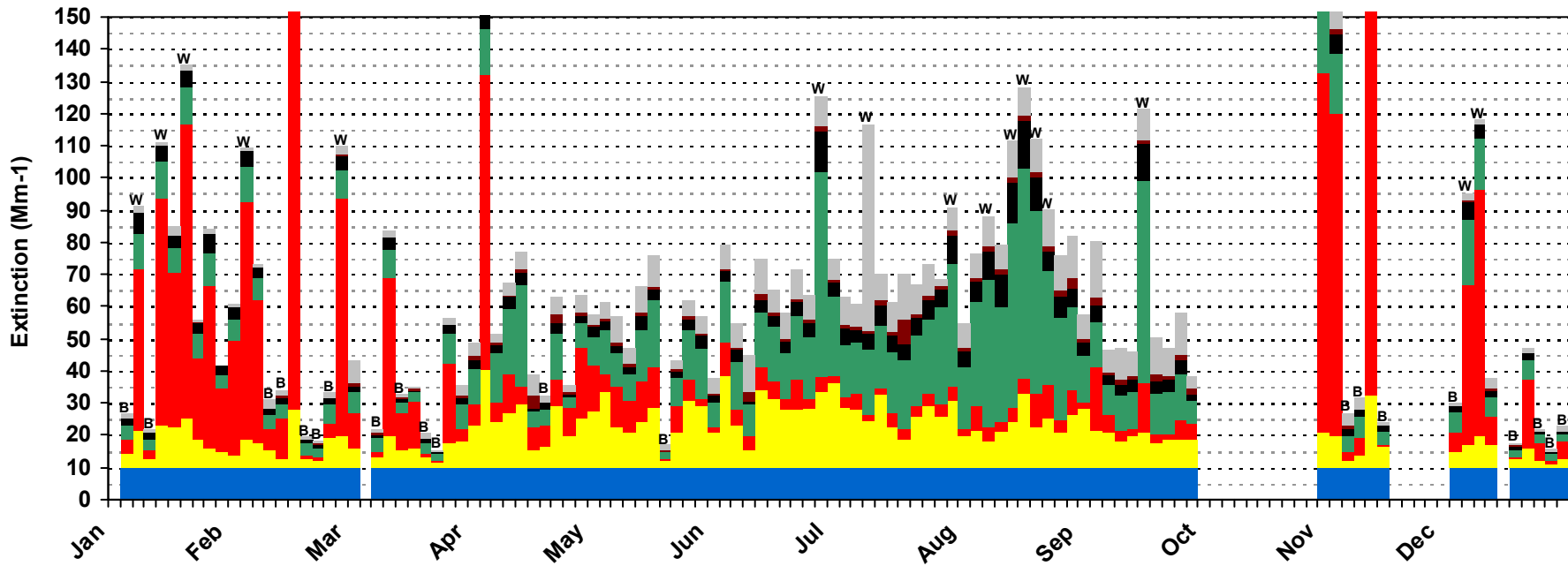
**20% Worst Visibility Days**  
Total Extinction = 125 Mm-1 (88 to 189 Mm-1)



**20% Best Visibility Days**  
Total Extinction = 25 Mm-1 (16 to 34 Mm-1)



- Coarse Material
- Soil
- Elemental Carbon
- Organic Material
- Ammonium Nitrate
- Ammonium Sulfate
- Rayleigh



## MONITORING DATA

### Kings Canyon National Park, CA 2002 Reconstructed Extinction Values SEQU1 Monitoring Data (every third day)

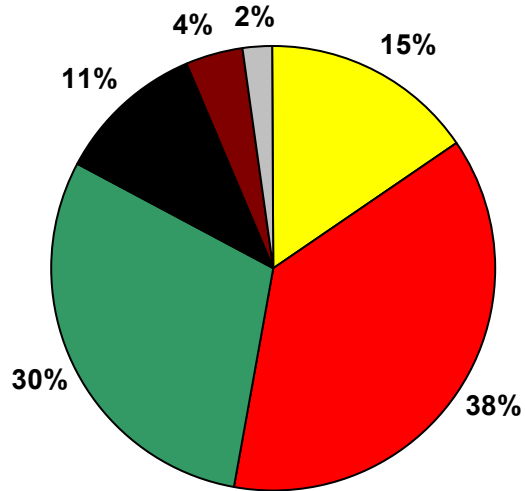
<b>20% Worst Visibility Days</b>			
	<b>Average (Mm-1)</b>	<b>Minimum (Mm-1)</b>	<b>Maximum (Mm-1)</b>
<b>Total Extinction:</b>	124.7 (25.2 dv)	88.2 (21.8 dv)	188.9 (29.4 dv)
<b>Aerosol Extinction*:</b>	114.7	78.2	178.9
	<b>Average (Mm-1)</b>	<b>% of Tot. Extinction</b>	<b>% of Aer. Extinction</b>
<b>Ammonium Sulfate:</b>	14.6	12%	13%
<b>Ammonium Nitrate:</b>	53.3	43%	46%
<b>Organic Material:</b>	29.2	23%	25%
<b>Elemental Carbon:</b>	7.6	6%	7%
<b>Soil:</b>	1.0	1%	1%
<b>Coarse Material:</b>	8.9	7%	8%
<b>Rayleigh:</b>	10.0	8%	N/A
<b>20% Best Visibility Days</b>			
	<b>Average (Mm-1)</b>	<b>Minimum (Mm-1)</b>	<b>Maximum (Mm-1)</b>
<b>Total Extinction:</b>	24.5 (9.0 dv)	15.5 (4.4 dv)	34.0 (12.3 dv)
<b>Aerosol Extinction*:</b>	14.5	5.5	24.0
	<b>Average (Mm-1)</b>	<b>% of Tot. Extinction</b>	<b>% of Aer. Extinction</b>
<b>Ammonium Sulfate:</b>	3.6	15%	25%
<b>Ammonium Nitrate:</b>	3.8	16%	27%
<b>Organic Material:</b>	3.9	16%	27%
<b>Elemental Carbon:</b>	1.4	6%	10%
<b>Soil:</b>	0.2	1%	1%
<b>Coarse Material:</b>	1.5	6%	10%
<b>Rayleigh:</b>	10.0	41%	N/A

\*Excludes Rayleigh Extinction

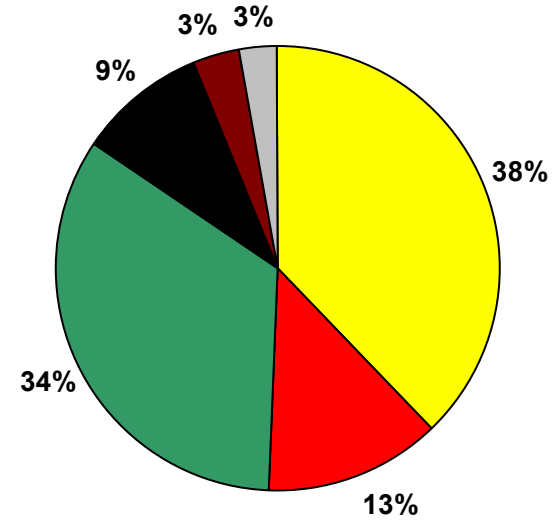
# MODEL RESULTS

## Kings Canyon National Park, CA 2002 Reconstructed Extinction CMAQ Model Results (every day)

**20% Worst Visibility Days**  
Aerosol Extinction\* = 41 Mm<sup>-1</sup> (27 to 87 Mm<sup>-1</sup>)

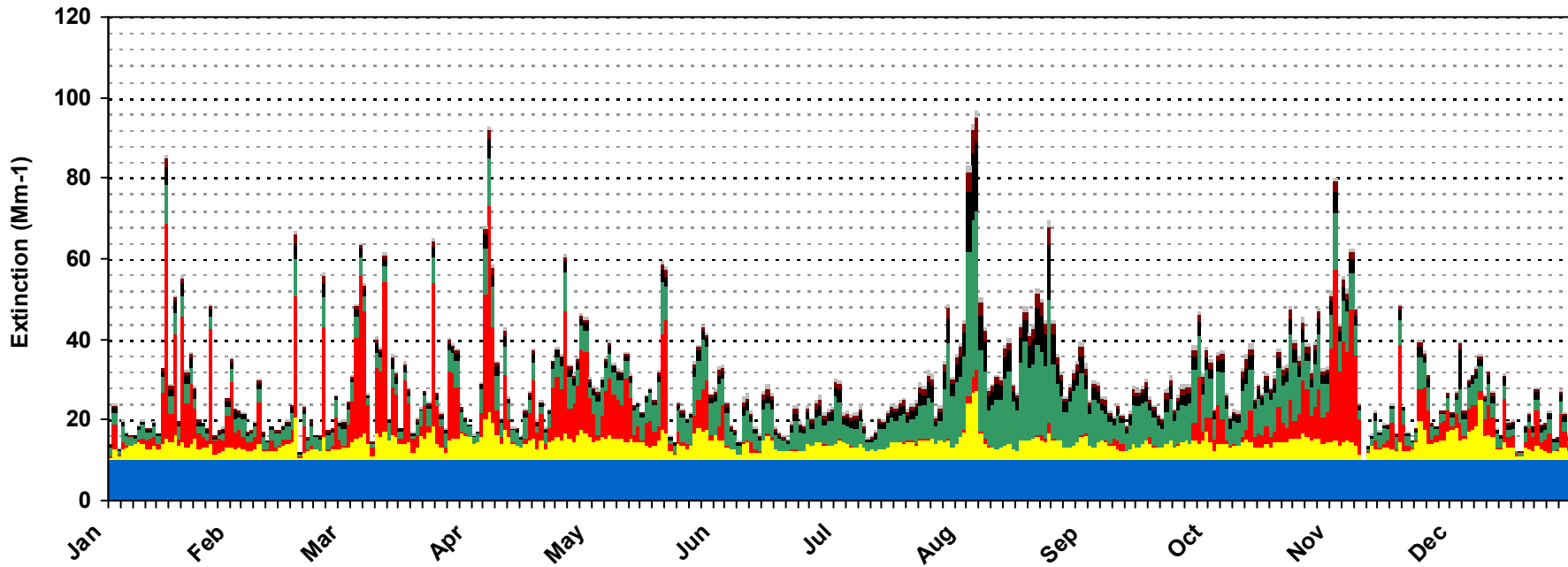


**20% Best Visibility Days**  
Aerosol Extinction\* = 7 Mm<sup>-1</sup> (0 to 9 Mm<sup>-1</sup>)



- Coarse Material
- Soil
- Elemental Carbon
- Organic Material
- Ammonium Nitrate
- Ammonium Sulfate
- Rayleigh

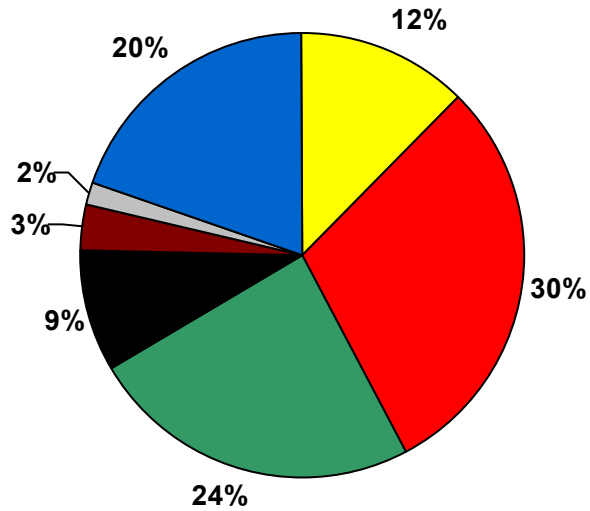
\*Excludes Rayleigh Extinction



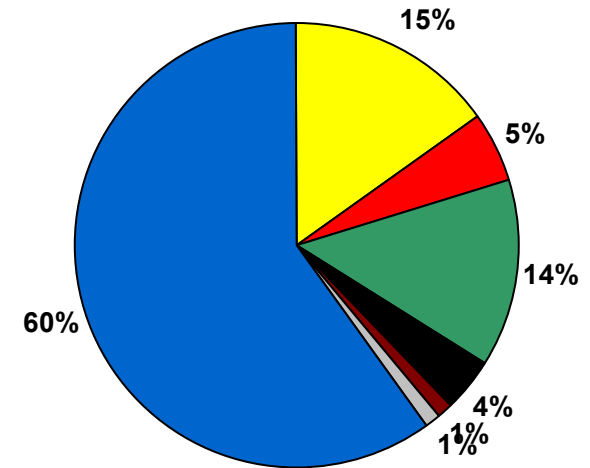
# MODEL RESULTS

## Kings Canyon National Park, CA 2002 Reconstructed Extinction CMAQ Model Results (every day)

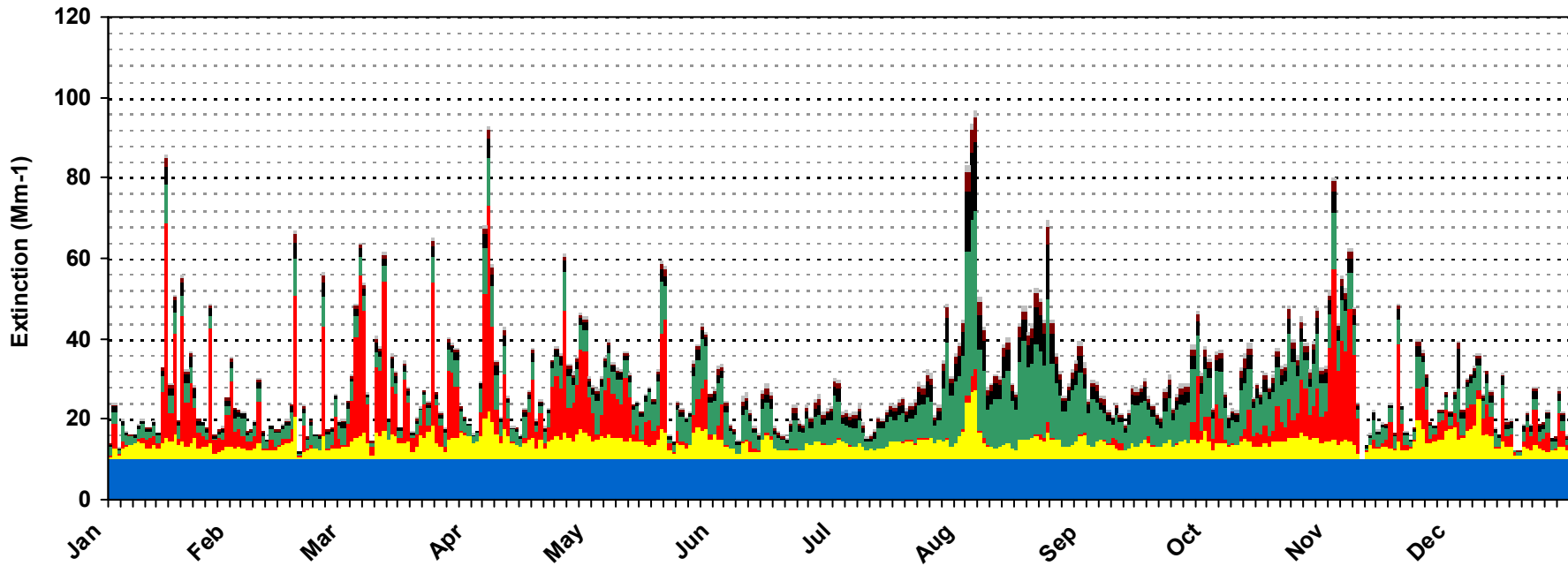
**20% Worst Visibility Days**  
Total Extinction = 51 Mm-1 (37 to 97 Mm-1)



**20% Best Visibility Days**  
Total Extinction = 17 Mm-1 (10 to 19 Mm-1)



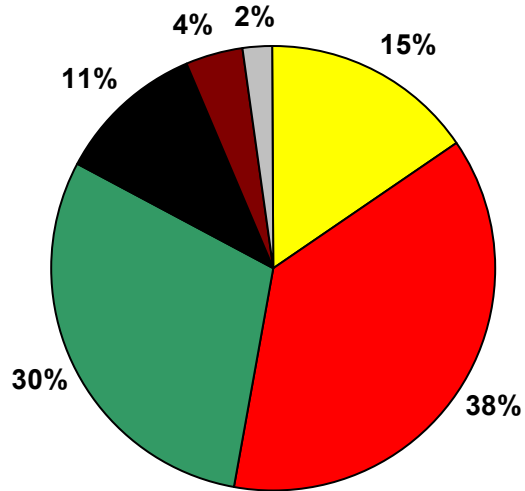
- Coarse Material
- Soil
- Elemental Carbon
- Organic Material
- Ammonium Nitrate
- Ammonium Sulfate
- Rayleigh



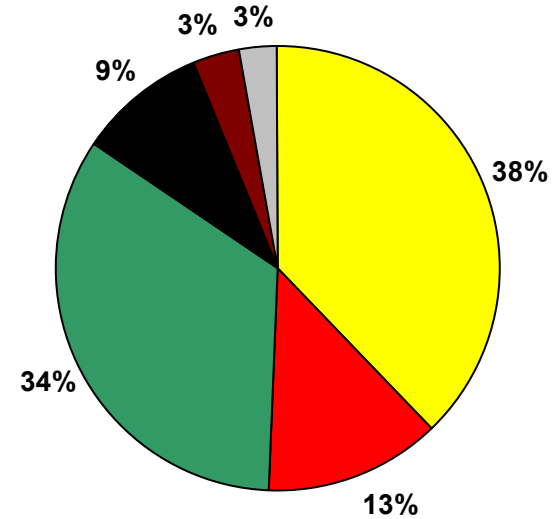
# MODEL RESULTS

## Kings Canyon National Park, CA 2002 Reconstructed Extinction CMAQ Model Results (every day)

**20% Worst Visibility Days**  
Aerosol Extinction\* = 41 Mm-1 (27 to 87 Mm-1)

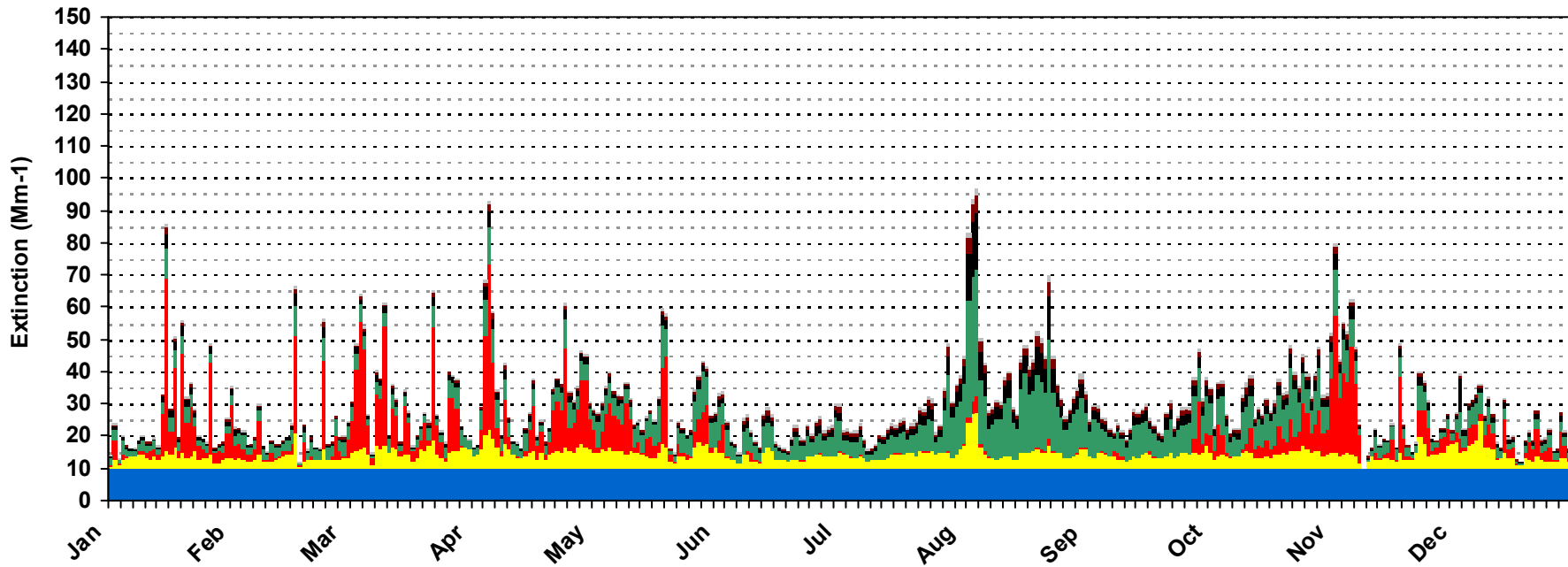


**20% Best Visibility Days**  
Aerosol Extinction\* = 7 Mm-1 (0 to 9 Mm-1)



- Coarse Material
- Soil
- Elemental Carbon
- Organic Material
- Ammonium Nitrate
- Ammonium Sulfate
- Rayleigh

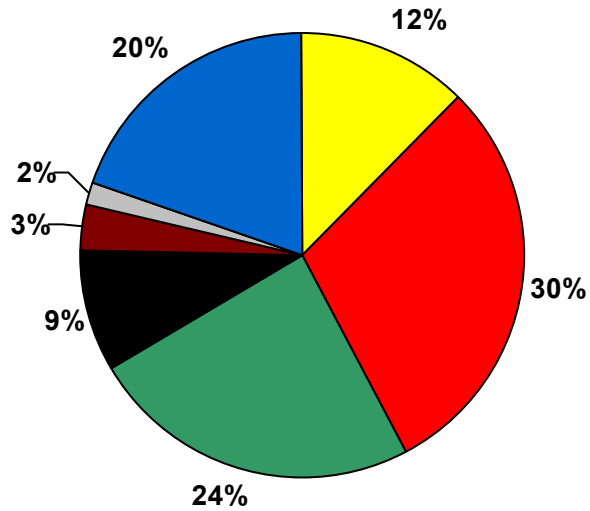
\*Excludes Rayleigh Extinction



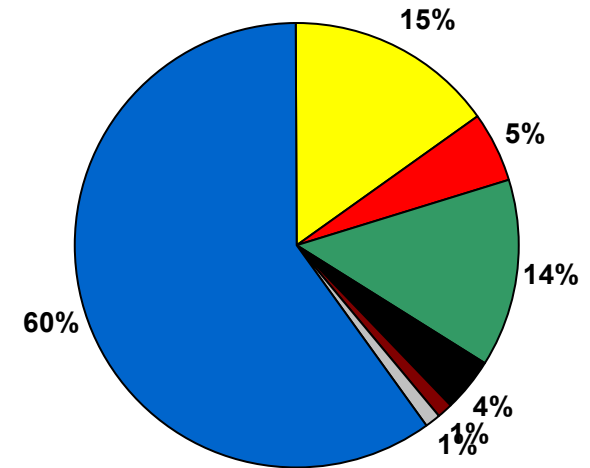
# MODEL RESULTS

## Kings Canyon National Park, CA 2002 Reconstructed Extinction CMAQ Model Results (every day)

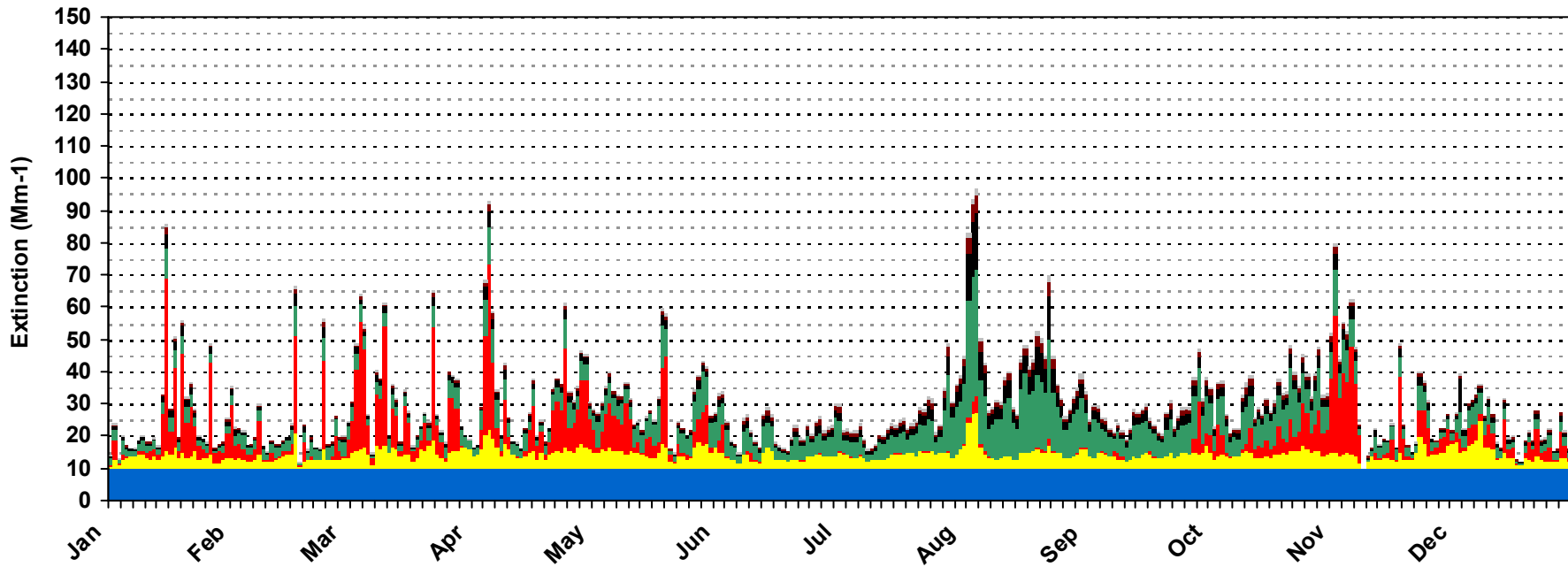
**20% Worst Visibility Days**  
Total Extinction = 51 Mm-1 (37 to 97 Mm-1)



**20% Best Visibility Days**  
Total Extinction = 17 Mm-1 (10 to 19 Mm-1)



- Coarse Material
- Soil
- Elemental Carbon
- Organic Material
- Ammonium Nitrate
- Ammonium Sulfate
- Rayleigh



## MODEL RESULTS

### Kings Canyon National Park, CA 2002 Reconstructed Extinction CMAQ Model Results (every day)

<b>20% Worst Visibility Days</b>			
	<b>Average (Mm-1)</b>	<b>Minimum (Mm-1)</b>	<b>Maximum (Mm-1)</b>
<b>Total Extinction:</b>	50.7 (16.2 dv)	37.1 (13.1 dv)	96.6 (22.7 dv)
<b>Aerosol Extinction*:</b>	40.7	27.1	86.6
	<b>Average (Mm-1)</b>	<b>% of Tot. Extinction</b>	<b>% of Aer. Extinction</b>
<b>Ammonium Sulfate:</b>	6.3	12%	15%
<b>Ammonium Nitrate:</b>	15.1	30%	37%
<b>Organic Material:</b>	12.2	24%	30%
<b>Elemental Carbon:</b>	4.4	9%	11%
<b>Soil:</b>	1.7	3%	4%
<b>Coarse Material:</b>	0.9	2%	2%
<b>Rayleigh:</b>	10.0	20%	N/A
<b>20% Best Visibility Days</b>			
	<b>Average (Mm-1)</b>	<b>Minimum (Mm-1)</b>	<b>Maximum (Mm-1)</b>
<b>Total Extinction:</b>	16.7 (5.1 dv)	10.0 (0.0 dv)	19.0 (6.4 dv)
<b>Aerosol Extinction*:</b>	6.7	0.0	9.0
	<b>Average (Mm-1)</b>	<b>% of Tot. Extinction</b>	<b>% of Aer. Extinction</b>
<b>Ammonium Sulfate:</b>	2.5	15%	38%
<b>Ammonium Nitrate:</b>	0.9	5%	13%
<b>Organic Material:</b>	2.3	14%	34%
<b>Elemental Carbon:</b>	0.6	4%	9%
<b>Soil:</b>	0.2	1%	3%
<b>Coarse Material:</b>	0.2	1%	3%
<b>Rayleigh:</b>	10.0	60%	N/A

\*Excludes Rayleigh Extinction