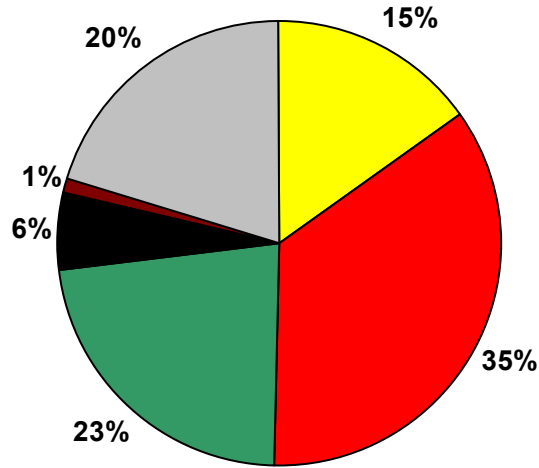


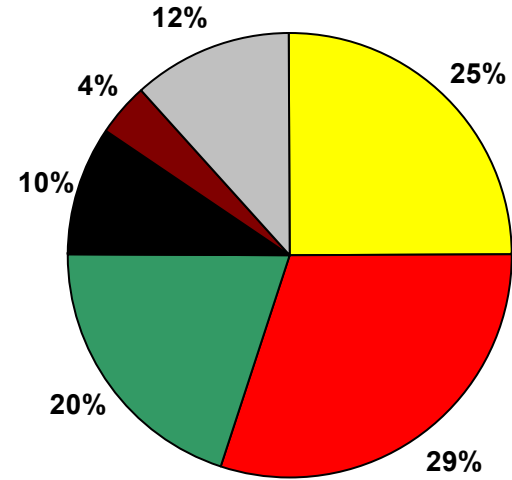
**MONITORING DATA**

**Cucamonga Wilderness Area, CA  
2002 Reconstructed Extinction  
SAGA1 Monitoring Data (every third day)**

**20% Worst Visibility Days**  
Aerosol Extinction\* = 80 Mm-1 (57 to 214 Mm-1)

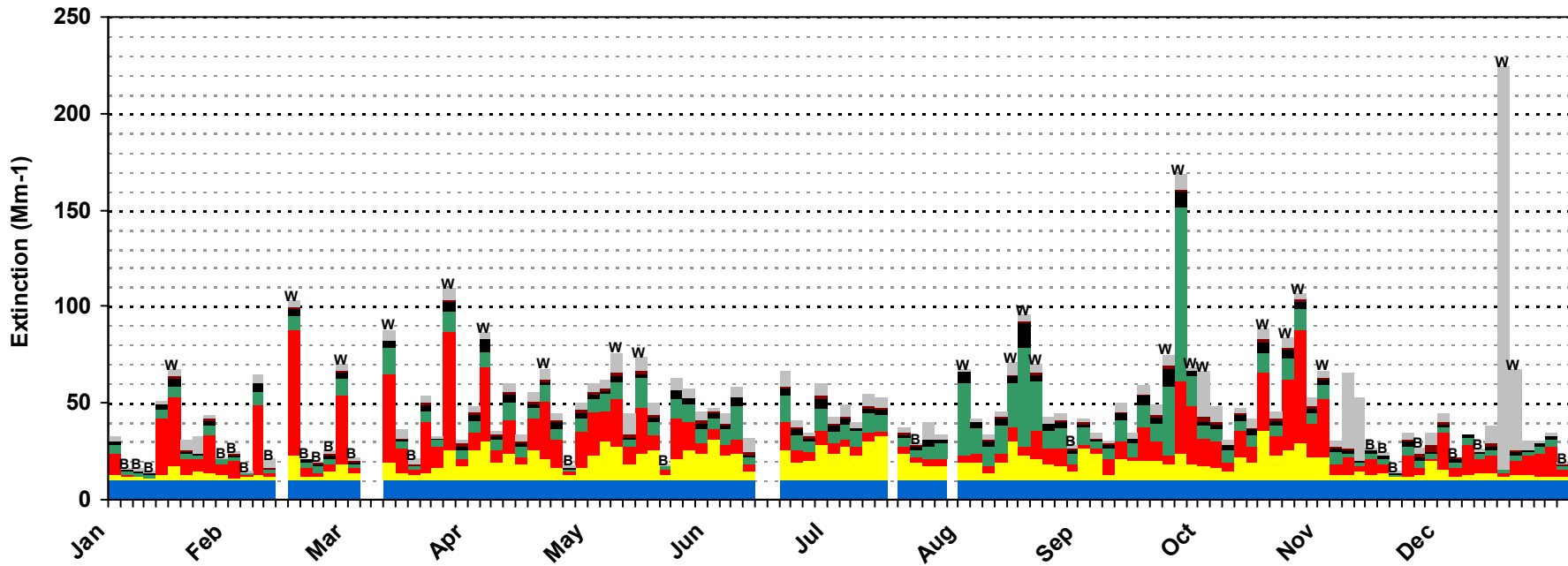


**20% Best Visibility Days**  
Aerosol Extinction\* = 11 Mm-1 (4 to 19 Mm-1)



- Coarse Material
- Soil
- Elemental Carbon
- Organic Material
- Ammonium Nitrate
- Ammonium Sulfate
- Rayleigh

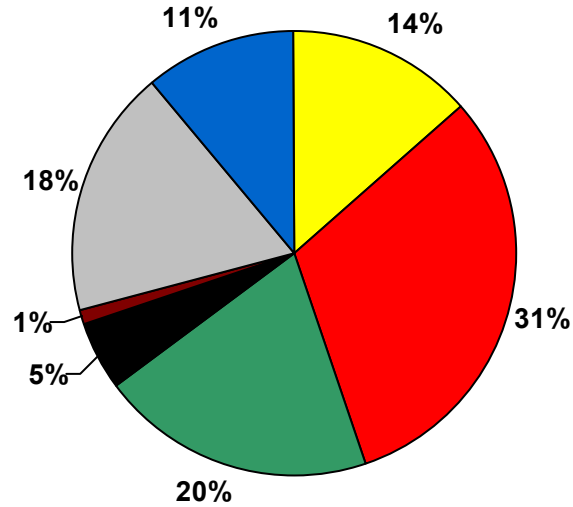
\*Excludes Rayleigh Extinction



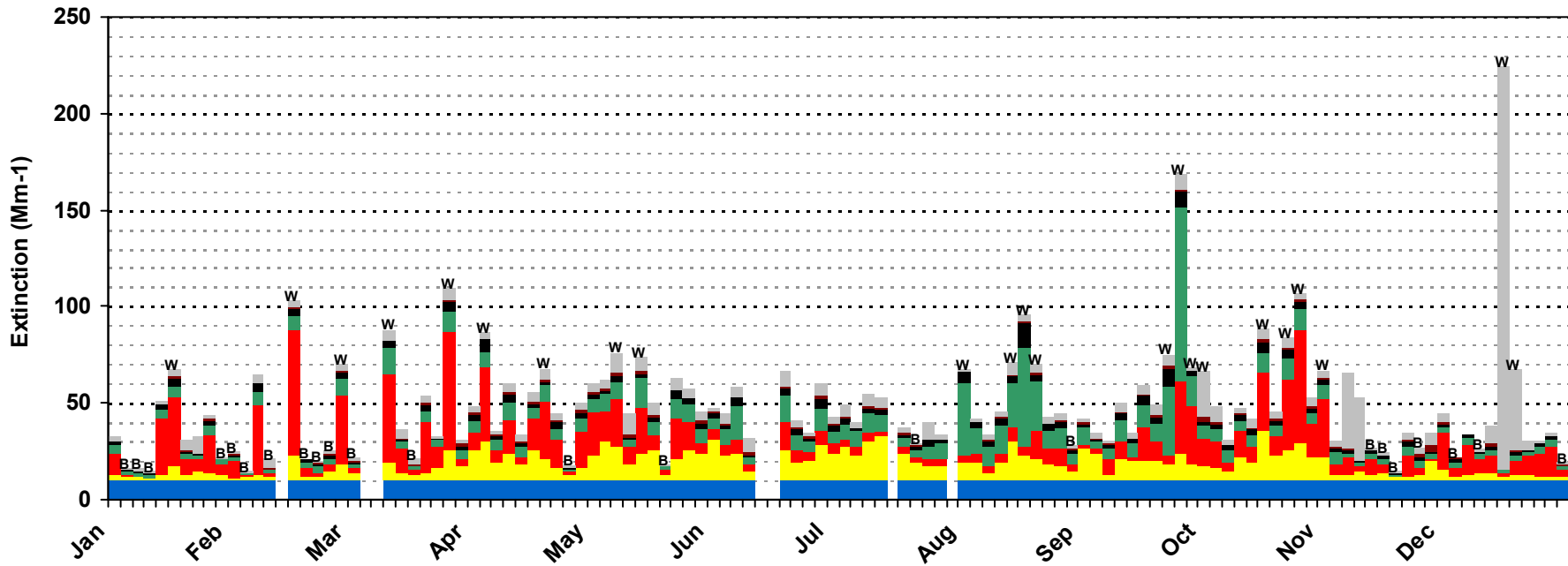
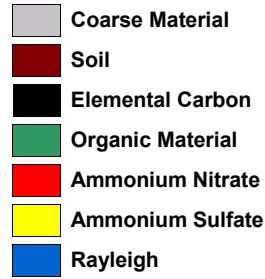
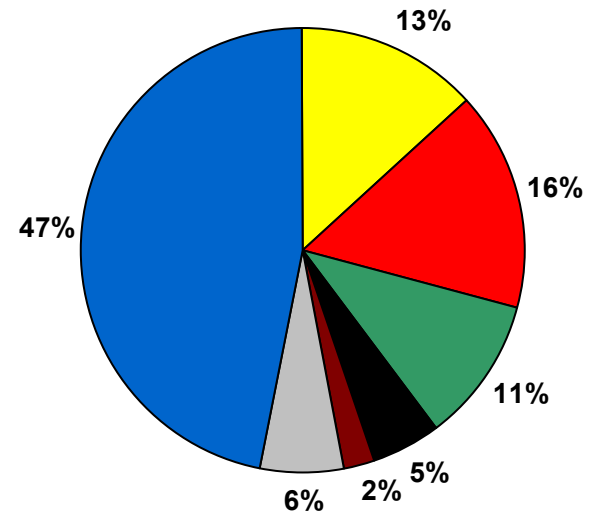
**MONITORING DATA**

**Cucamonga Wilderness Area, CA  
2002 Reconstructed Extinction  
SAGA1 Monitoring Data (every third day)**

**20% Worst Visibility Days**  
Total Extinction = 90 Mm-1 (67 to 224 Mm-1)



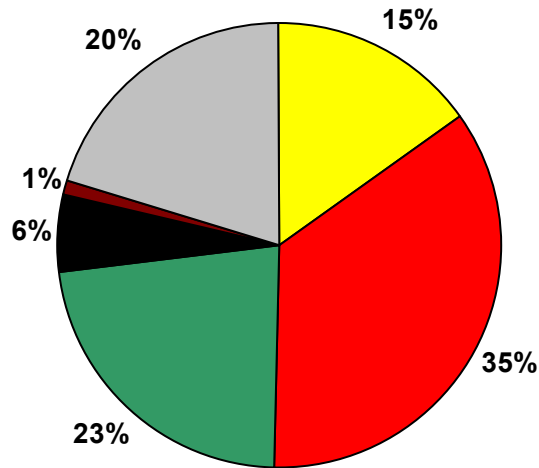
**20% Best Visibility Days**  
Total Extinction = 21 Mm-1 (14 to 29 Mm-1)



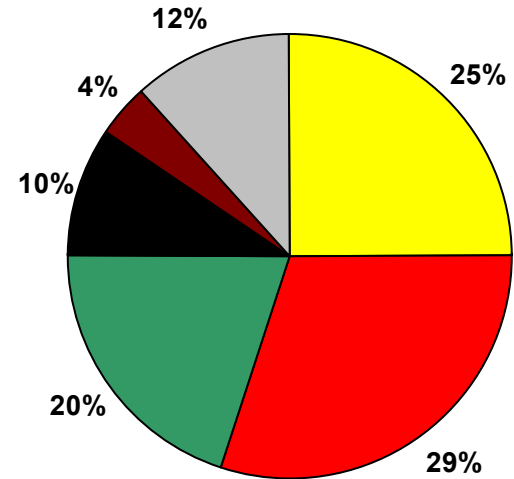
**MONITORING DATA**

**Cucamonga Wilderness Area, CA  
2002 Reconstructed Extinction  
SAGA1 Monitoring Data (every third day)**

**20% Worst Visibility Days**  
Aerosol Extinction\* = 80 Mm-1 (57 to 214 Mm-1)

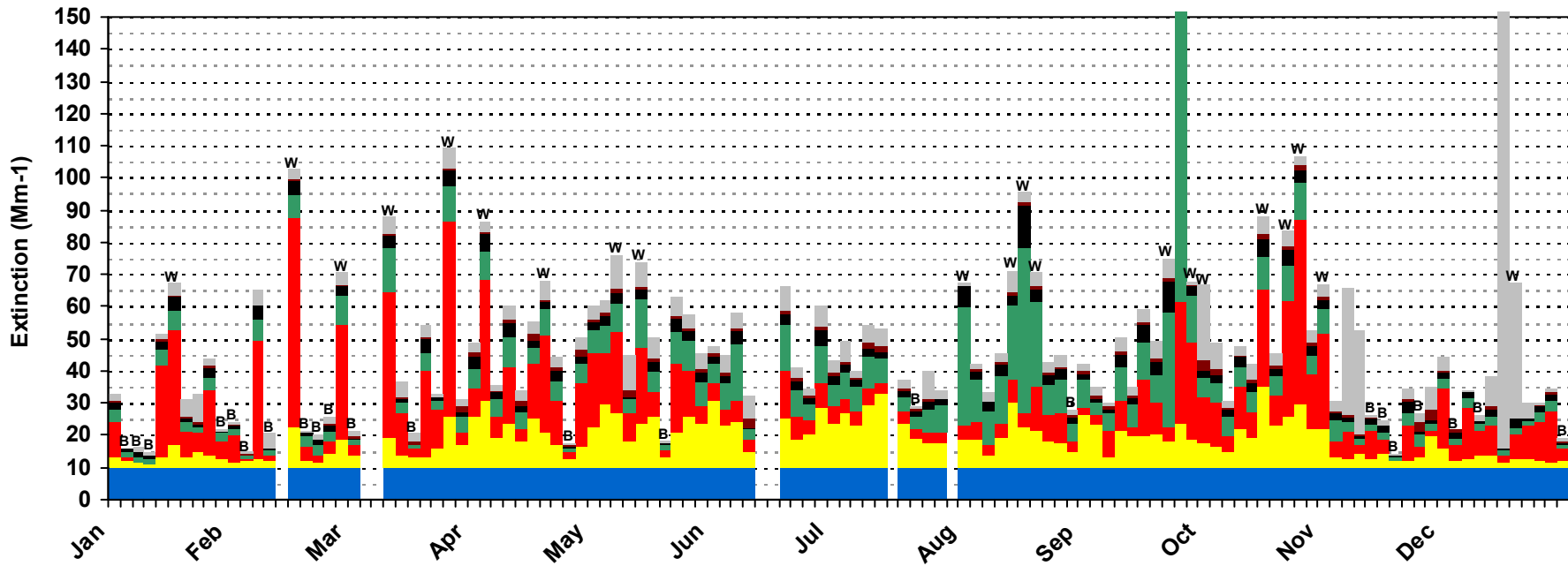


**20% Best Visibility Days**  
Aerosol Extinction\* = 11 Mm-1 (4 to 19 Mm-1)



- Coarse Material
- Soil
- Elemental Carbon
- Organic Material
- Ammonium Nitrate
- Ammonium Sulfate
- Rayleigh

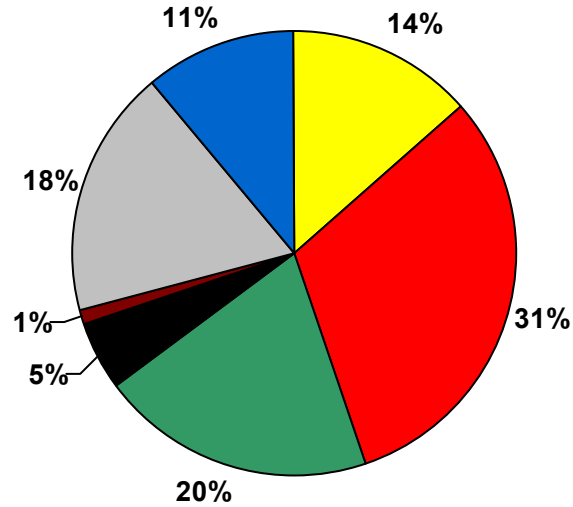
\*Excludes Rayleigh Extinction



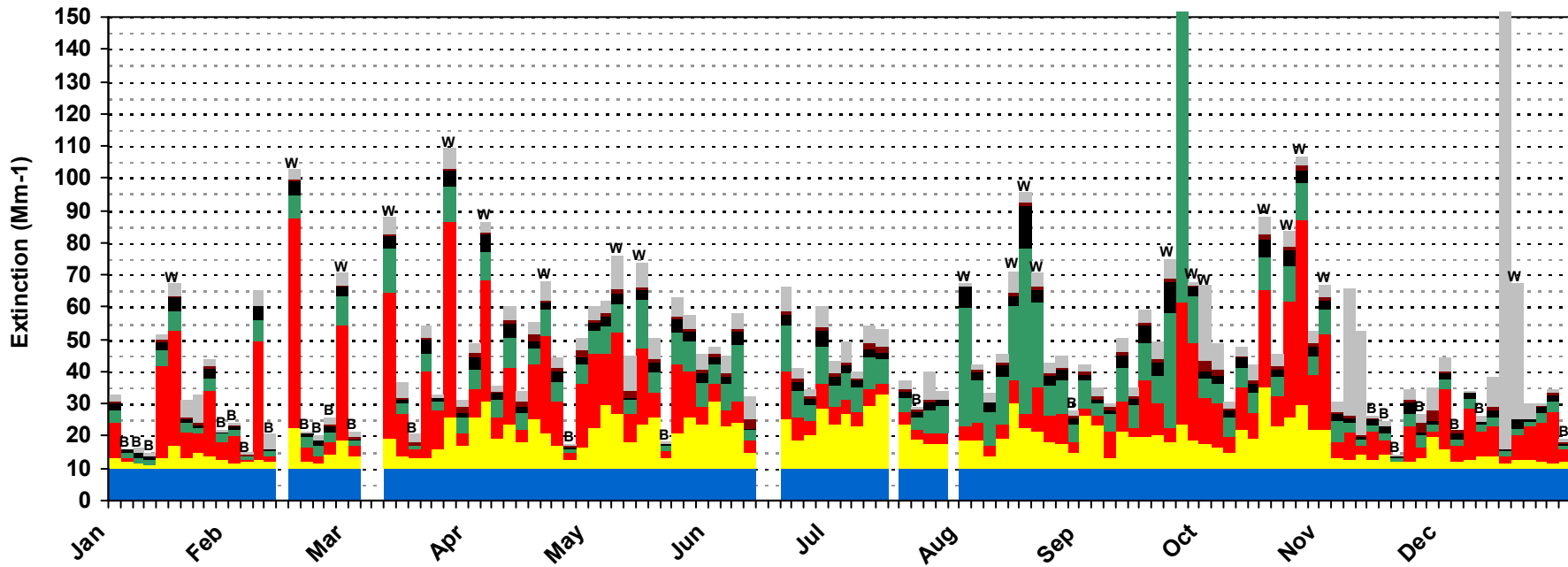
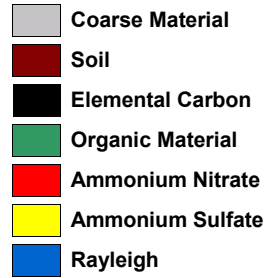
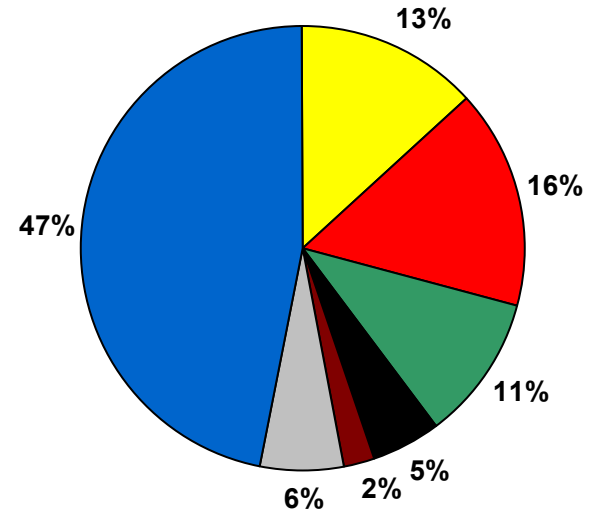
**MONITORING DATA**

**Cucamonga Wilderness Area, CA  
2002 Reconstructed Extinction  
SAGA1 Monitoring Data (every third day)**

**20% Worst Visibility Days**  
Total Extinction = 90 Mm-1 (67 to 224 Mm-1)



**20% Best Visibility Days**  
Total Extinction = 21 Mm-1 (14 to 29 Mm-1)



## MONITORING DATA

### Cucamonga Wilderness Area, CA 2002 Reconstructed Extinction Values SAGA1 Monitoring Data (every third day)

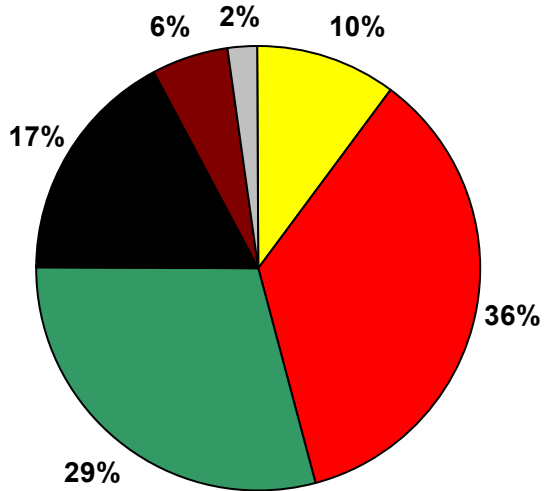
| <b>20% Worst Visibility Days</b> |                       |                             |                             |
|----------------------------------|-----------------------|-----------------------------|-----------------------------|
|                                  | <b>Average (Mm-1)</b> | <b>Minimum (Mm-1)</b>       | <b>Maximum (Mm-1)</b>       |
| <b>Total Extinction:</b>         | 89.7 (21.9 dv)        | 66.6 (19.0 dv)              | 224.2 (31.1 dv)             |
| <b>Aerosol Extinction*:</b>      | 79.7                  | 56.6                        | 214.2                       |
|                                  | <b>Average (Mm-1)</b> | <b>% of Tot. Extinction</b> | <b>% of Aer. Extinction</b> |
| <b>Ammonium Sulfate:</b>         | 12.2                  | 14%                         | 15%                         |
| <b>Ammonium Nitrate:</b>         | 27.8                  | 31%                         | 35%                         |
| <b>Organic Material:</b>         | 18.1                  | 20%                         | 23%                         |
| <b>Elemental Carbon:</b>         | 4.5                   | 5%                          | 6%                          |
| <b>Soil:</b>                     | 1.0                   | 1%                          | 1%                          |
| <b>Coarse Material:</b>          | 16.1                  | 18%                         | 20%                         |
| <b>Rayleigh:</b>                 | 10.0                  | 11%                         | N/A                         |
| <b>20% Best Visibility Days</b>  |                       |                             |                             |
|                                  | <b>Average (Mm-1)</b> | <b>Minimum (Mm-1)</b>       | <b>Maximum (Mm-1)</b>       |
| <b>Total Extinction:</b>         | 21.3 (7.6 dv)         | 14.2 (3.5 dv)               | 29.2 (10.7 dv)              |
| <b>Aerosol Extinction*:</b>      | 11.3                  | 4.2                         | 19.2                        |
|                                  | <b>Average (Mm-1)</b> | <b>% of Tot. Extinction</b> | <b>% of Aer. Extinction</b> |
| <b>Ammonium Sulfate:</b>         | 2.8                   | 13%                         | 25%                         |
| <b>Ammonium Nitrate:</b>         | 3.4                   | 16%                         | 30%                         |
| <b>Organic Material:</b>         | 2.3                   | 11%                         | 20%                         |
| <b>Elemental Carbon:</b>         | 1.1                   | 5%                          | 9%                          |
| <b>Soil:</b>                     | 0.4                   | 2%                          | 4%                          |
| <b>Coarse Material:</b>          | 1.3                   | 6%                          | 11%                         |
| <b>Rayleigh:</b>                 | 10.0                  | 47%                         | N/A                         |

\*Excludes Rayleigh Extinction

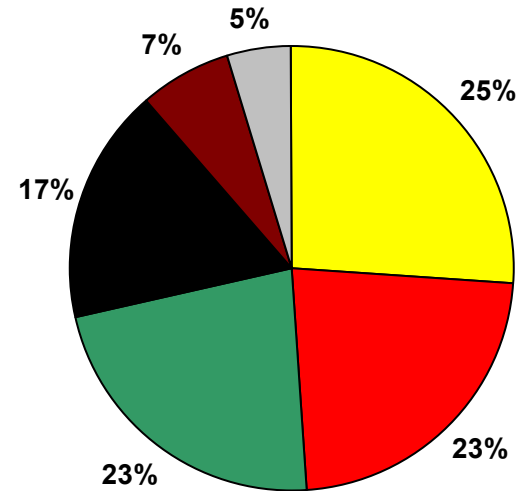
# MODEL RESULTS

## Cucamonga Wilderness Area, CA 2002 Reconstructed Extinction CMAQ Model Results (every day)

**20% Worst Visibility Days**  
Aerosol Extinction\* = 188 Mm-1 (105 to 1132 Mm-1)

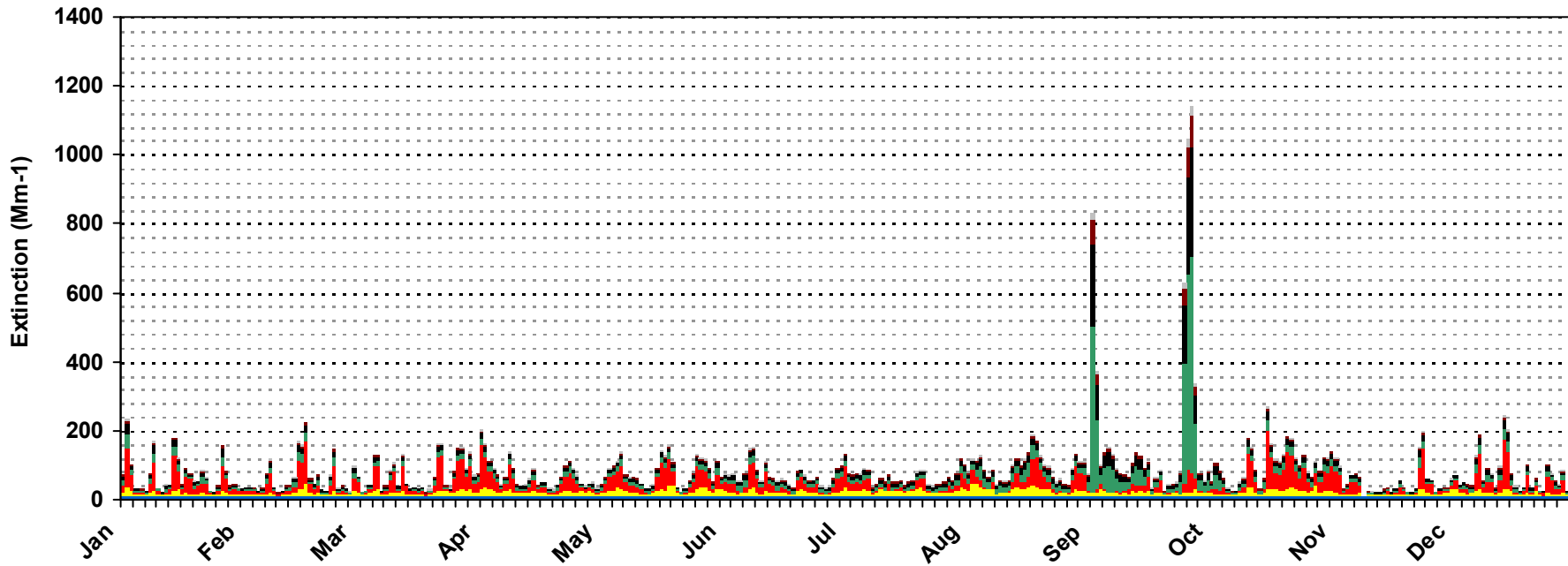


**20% Best Visibility Days**  
Aerosol Extinction\* = 19 Mm-1 (2 to 27 Mm-1)



- Coarse Material
- Soil
- Elemental Carbon
- Organic Material
- Ammonium Nitrate
- Ammonium Sulfate
- Rayleigh

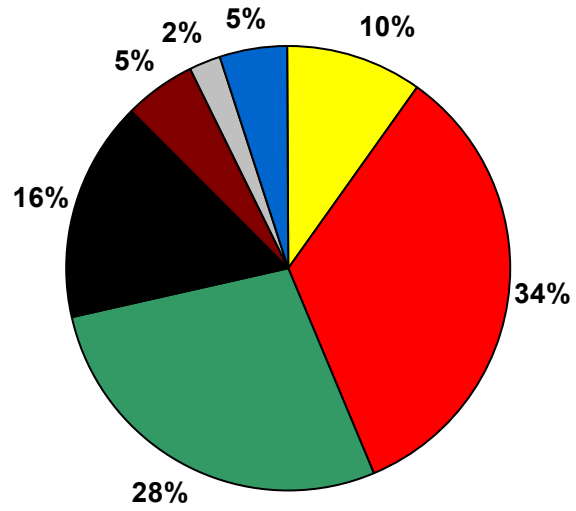
\*Excludes Rayleigh Extinction



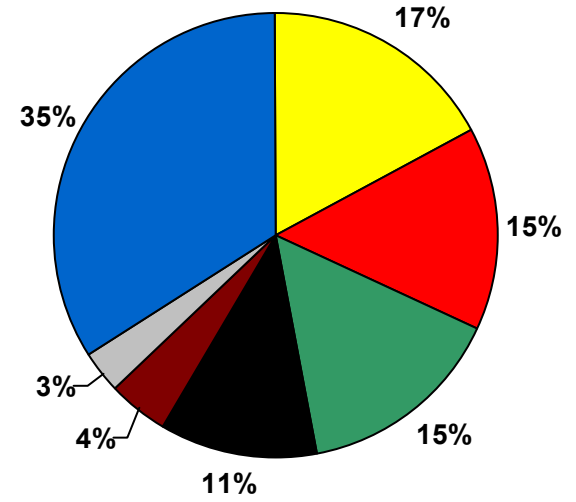
# MODEL RESULTS

## Cucamonga Wilderness Area, CA 2002 Reconstructed Extinction CMAQ Model Results (every day)

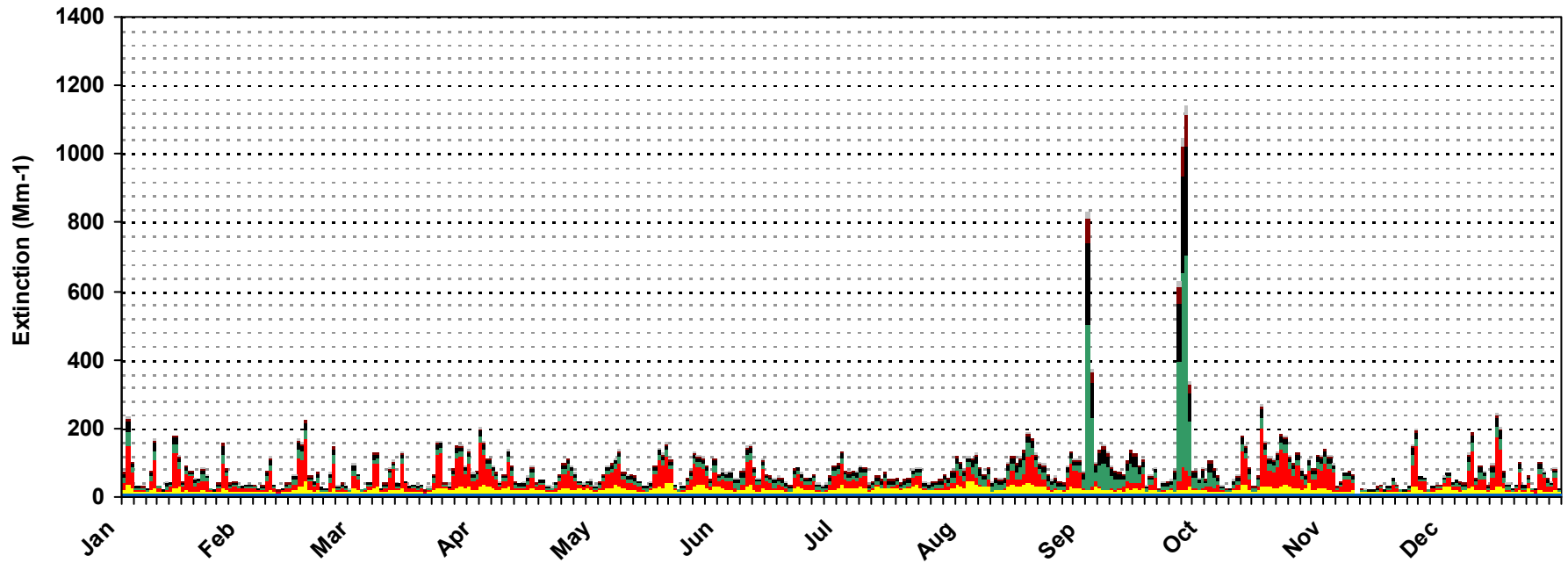
**20% Worst Visibility Days**  
Total Extinction = 198 Mm<sup>-1</sup> (115 to 1142 Mm<sup>-1</sup>)



**20% Best Visibility Days**  
Total Extinction = 29 Mm<sup>-1</sup> (12 to 37 Mm<sup>-1</sup>)



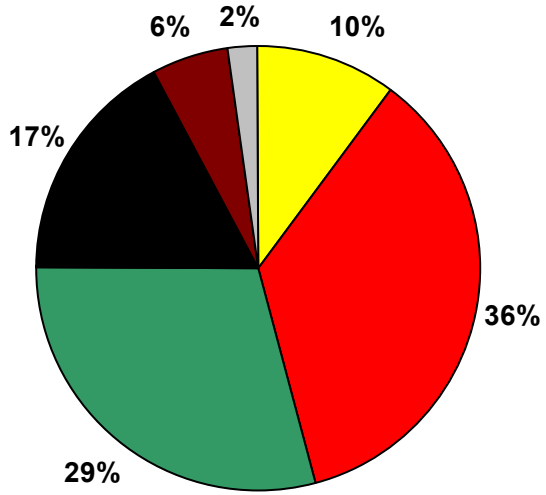
- Coarse Material
- Soil
- Elemental Carbon
- Organic Material
- Ammonium Nitrate
- Ammonium Sulfate
- Rayleigh



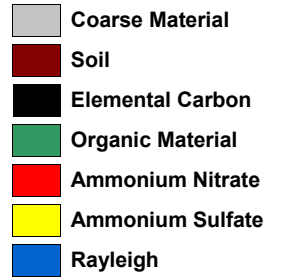
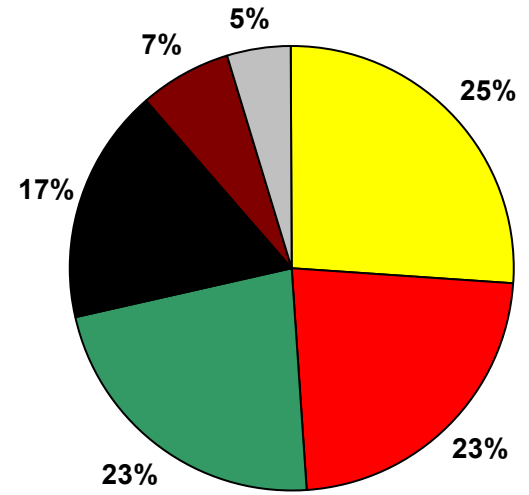
# MODEL RESULTS

## Cucamonga Wilderness Area, CA 2002 Reconstructed Extinction CMAQ Model Results (every day)

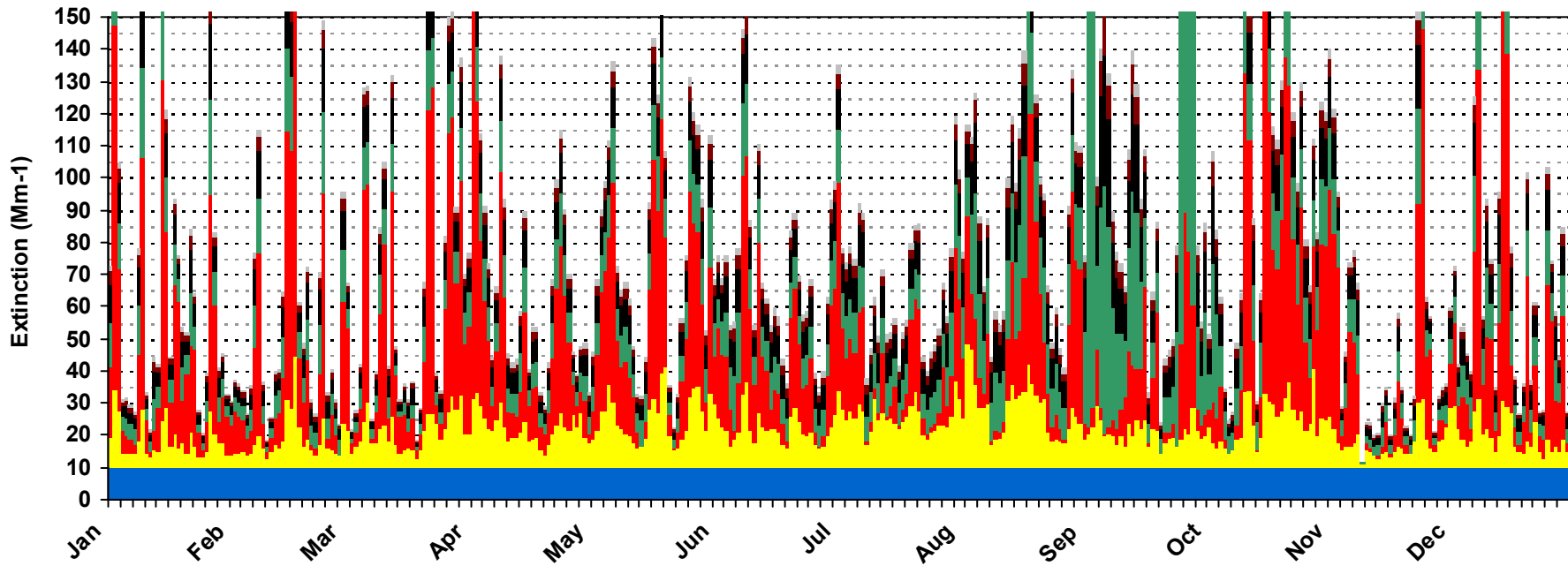
**20% Worst Visibility Days**  
Aerosol Extinction\* = 188 Mm-1 (105 to 1132 Mm-1)



**20% Best Visibility Days**  
Aerosol Extinction\* = 19 Mm-1 (2 to 27 Mm-1)



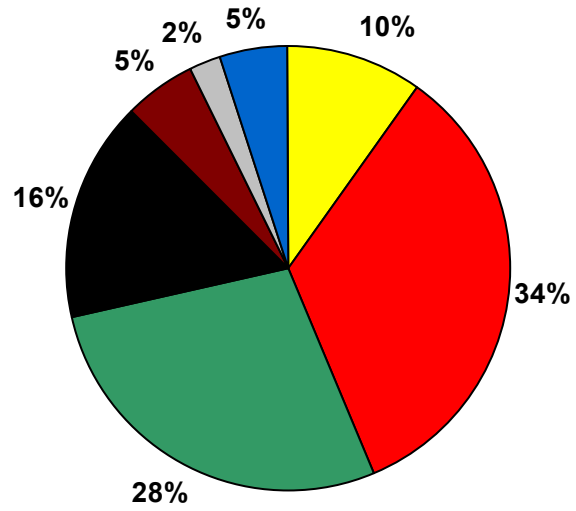
\*Excludes Rayleigh Extinction



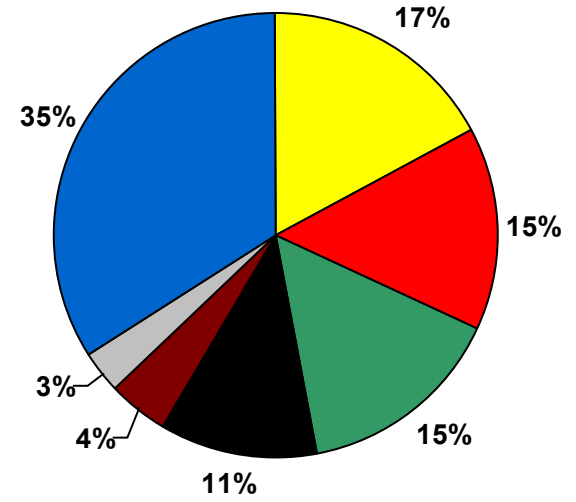
# MODEL RESULTS

## Cucamonga Wilderness Area, CA 2002 Reconstructed Extinction CMAQ Model Results (every day)

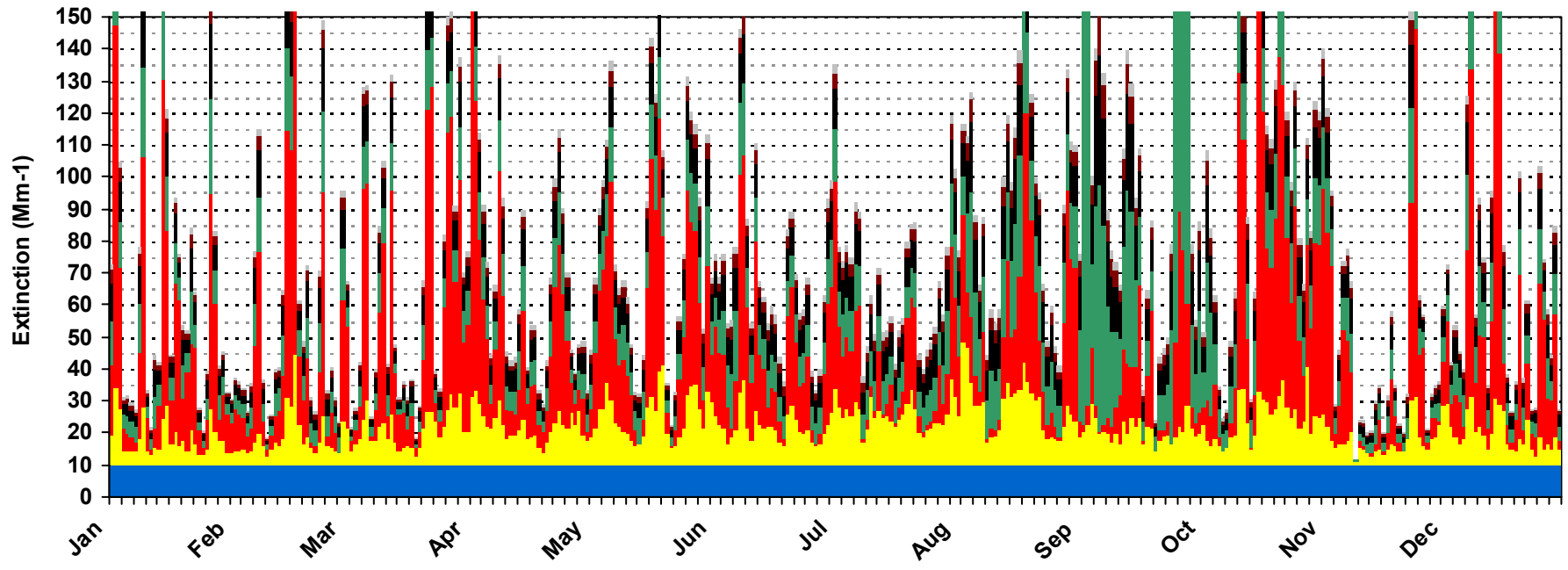
**20% Worst Visibility Days**  
Total Extinction = 198 Mm-1 (115 to 1142 Mm-1)



**20% Best Visibility Days**  
Total Extinction = 29 Mm-1 (12 to 37 Mm-1)



- Coarse Material
- Soil
- Elemental Carbon
- Organic Material
- Ammonium Nitrate
- Ammonium Sulfate
- Rayleigh



## MODEL RESULTS

### Cucamonga Wilderness Area, CA 2002 Reconstructed Extinction CMAQ Model Results (every day)

| <b>20% Worst Visibility Days</b> |                       |                             |                             |
|----------------------------------|-----------------------|-----------------------------|-----------------------------|
|                                  | <b>Average (Mm-1)</b> | <b>Minimum (Mm-1)</b>       | <b>Maximum (Mm-1)</b>       |
| <b>Total Extinction:</b>         | 198.2 (29.9 dv)       | 114.8 (24.4 dv)             | 1141.6 (47.4 dv)            |
| <b>Aerosol Extinction*:</b>      | 188.2                 | 104.8                       | 1131.6                      |
|                                  | <b>Average (Mm-1)</b> | <b>% of Tot. Extinction</b> | <b>% of Aer. Extinction</b> |
| <b>Ammonium Sulfate:</b>         | 19.6                  | 10%                         | 10%                         |
| <b>Ammonium Nitrate:</b>         | 66.6                  | 34%                         | 35%                         |
| <b>Organic Material:</b>         | 55.1                  | 28%                         | 29%                         |
| <b>Elemental Carbon:</b>         | 32.3                  | 16%                         | 17%                         |
| <b>Soil:</b>                     | 10.5                  | 5%                          | 6%                          |
| <b>Coarse Material:</b>          | 4.1                   | 2%                          | 2%                          |
| <b>Rayleigh:</b>                 | 10.0                  | 5%                          | N/A                         |
| <b>20% Best Visibility Days</b>  |                       |                             |                             |
|                                  | <b>Average (Mm-1)</b> | <b>Minimum (Mm-1)</b>       | <b>Maximum (Mm-1)</b>       |
| <b>Total Extinction:</b>         | 29.2 (10.7 dv)        | 11.7 (1.6 dv)               | 37.0 (13.1 dv)              |
| <b>Aerosol Extinction*:</b>      | 19.2                  | 1.7                         | 27.0                        |
|                                  | <b>Average (Mm-1)</b> | <b>% of Tot. Extinction</b> | <b>% of Aer. Extinction</b> |
| <b>Ammonium Sulfate:</b>         | 5.0                   | 17%                         | 26%                         |
| <b>Ammonium Nitrate:</b>         | 4.3                   | 15%                         | 23%                         |
| <b>Organic Material:</b>         | 4.3                   | 15%                         | 23%                         |
| <b>Elemental Carbon:</b>         | 3.3                   | 11%                         | 17%                         |
| <b>Soil:</b>                     | 1.3                   | 4%                          | 7%                          |
| <b>Coarse Material:</b>          | 0.9                   | 3%                          | 5%                          |
| <b>Rayleigh:</b>                 | 10.0                  | 34%                         | N/A                         |

\*Excludes Rayleigh Extinction