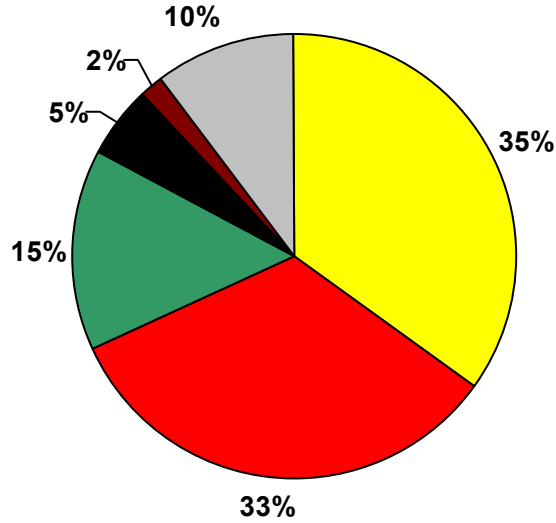


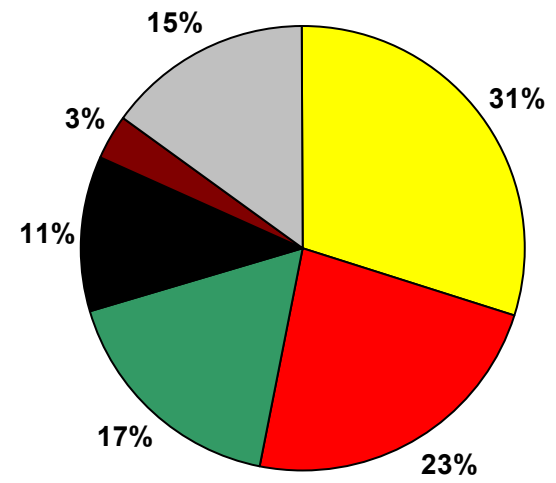
MONITORING DATA

**Agua Tibia Wilderness Area, CA
2002 Reconstructed Extinction
AGT11 Monitoring Data (every third day)**

20% Worst Visibility Days
Aerosol Extinction* = 99 Mm-1 (80 to 127 Mm-1)

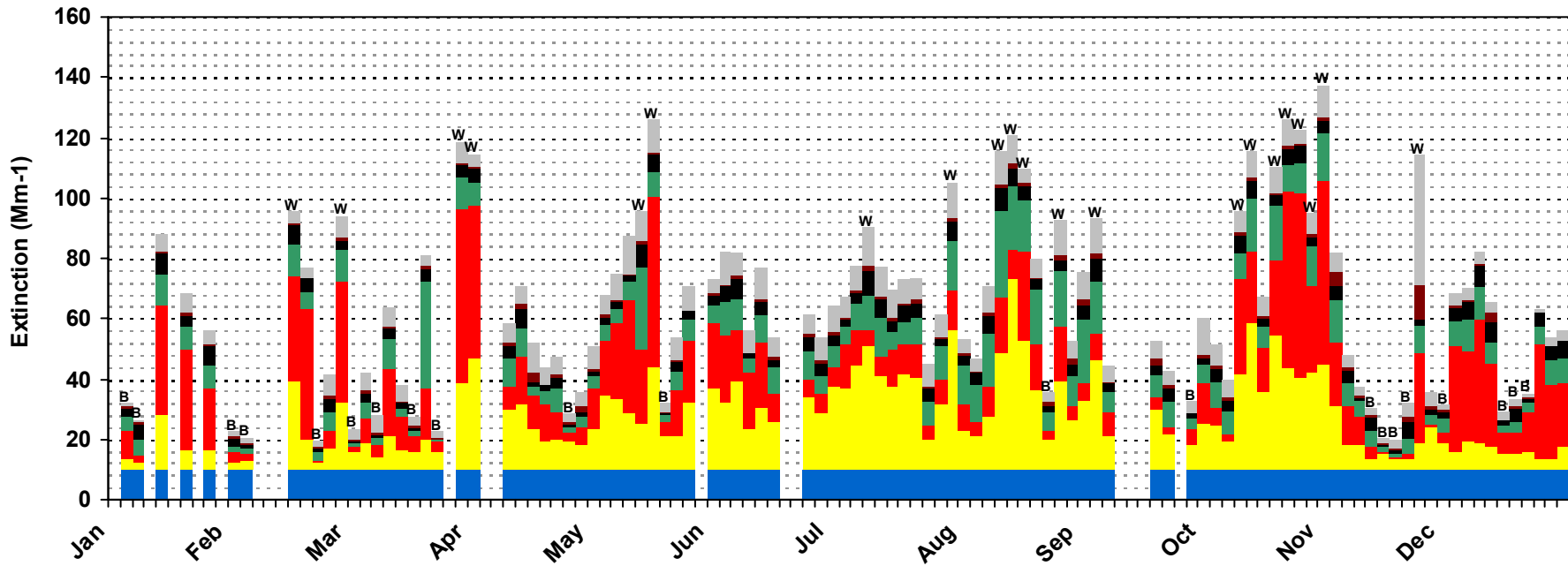


20% Best Visibility Days
Aerosol Extinction* = 18 Mm-1 (9 to 25 Mm-1)



- Coarse Material
- Soil
- Elemental Carbon
- Organic Material
- Ammonium Nitrate
- Ammonium Sulfate
- Rayleigh

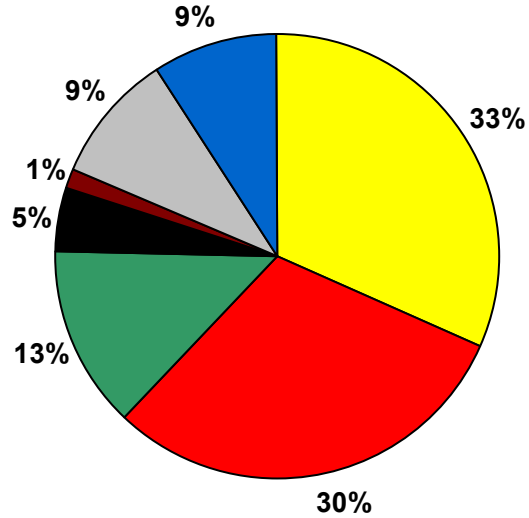
*Excludes Rayleigh Extinction



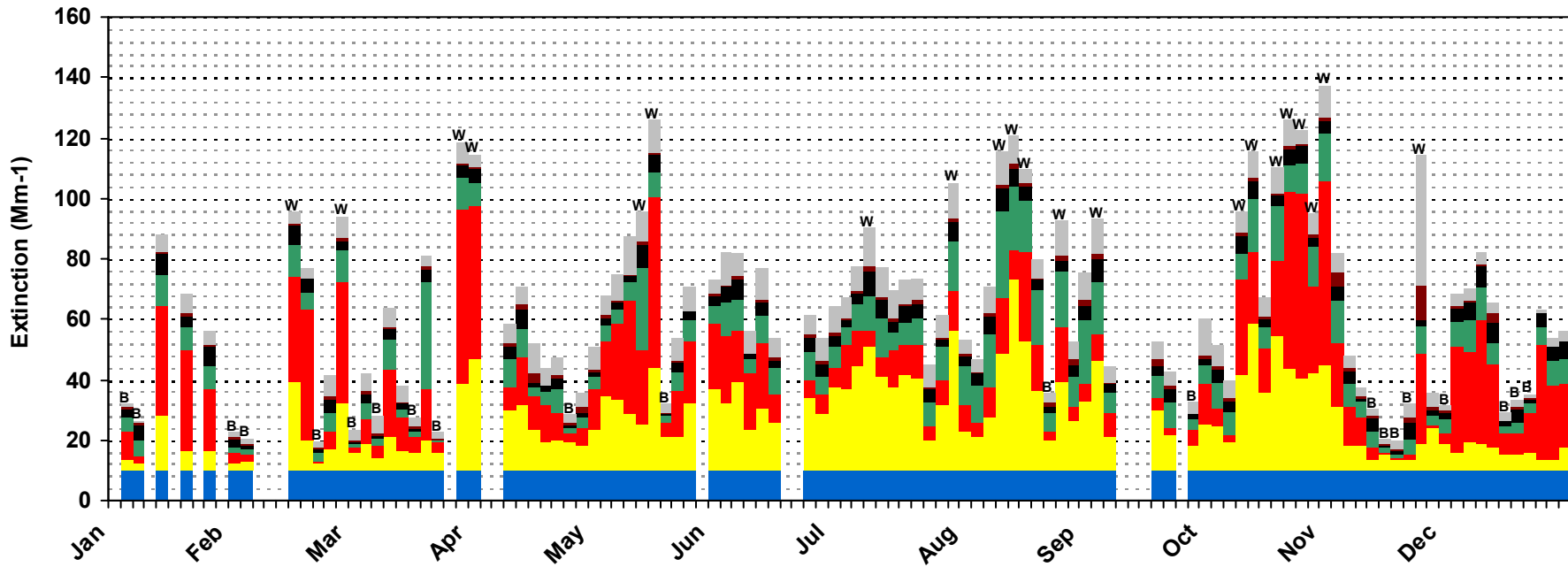
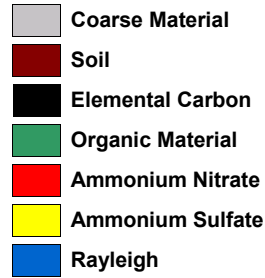
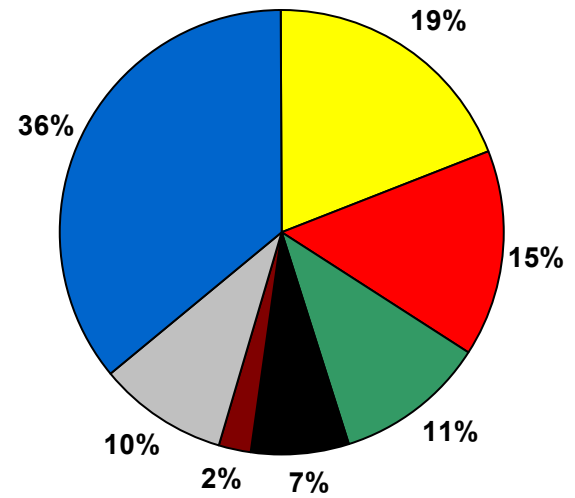
MONITORING DATA

**Agua Tibia Wilderness Area, CA
2002 Reconstructed Extinction
AGT11 Monitoring Data (every third day)**

20% Worst Visibility Days
Total Extinction = 109 Mm-1 (90 to 137 Mm-1)



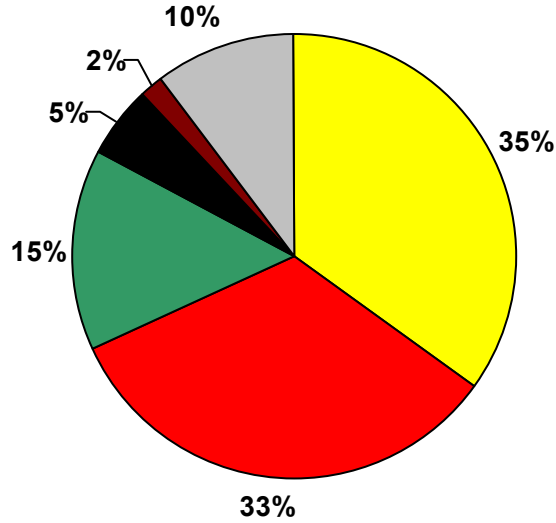
20% Best Visibility Days
Total Extinction = 28 Mm-1 (19 to 35 Mm-1)



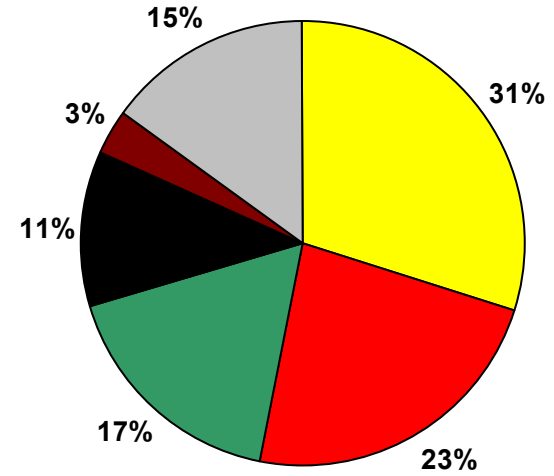
MONITORING DATA

**Agua Tibia Wilderness Area, CA
2002 Reconstructed Extinction
AGT11 Monitoring Data (every third day)**

20% Worst Visibility Days
Aerosol Extinction* = 99 Mm-1 (80 to 127 Mm-1)

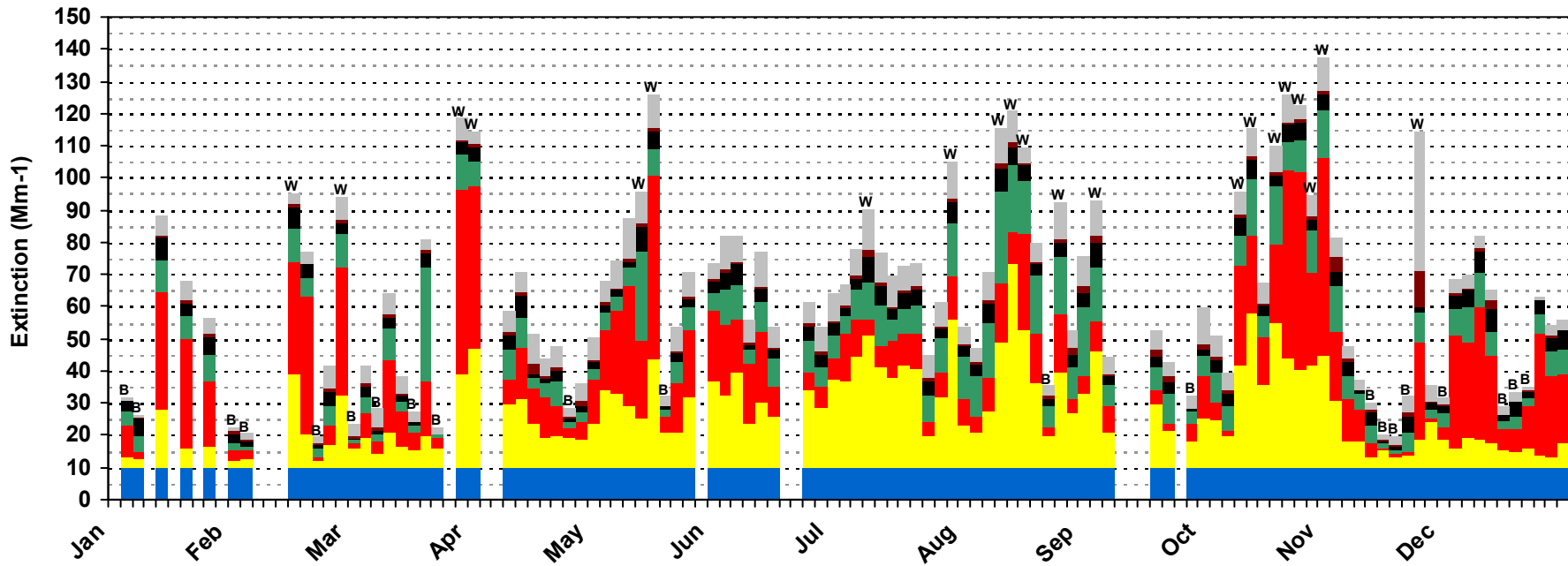


20% Best Visibility Days
Aerosol Extinction* = 18 Mm-1 (9 to 25 Mm-1)



- Coarse Material
- Soil
- Elemental Carbon
- Organic Material
- Ammonium Nitrate
- Ammonium Sulfate
- Rayleigh

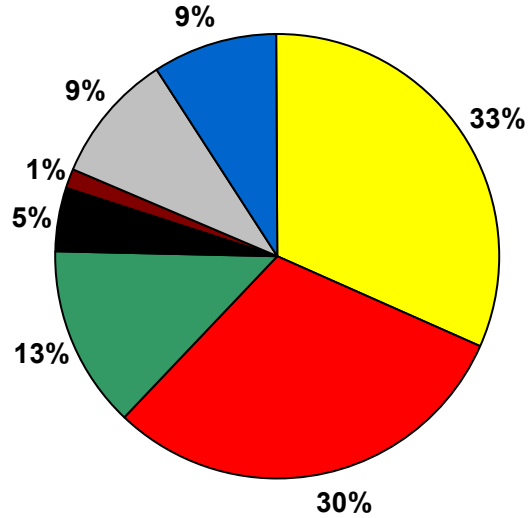
*Excludes Rayleigh Extinction



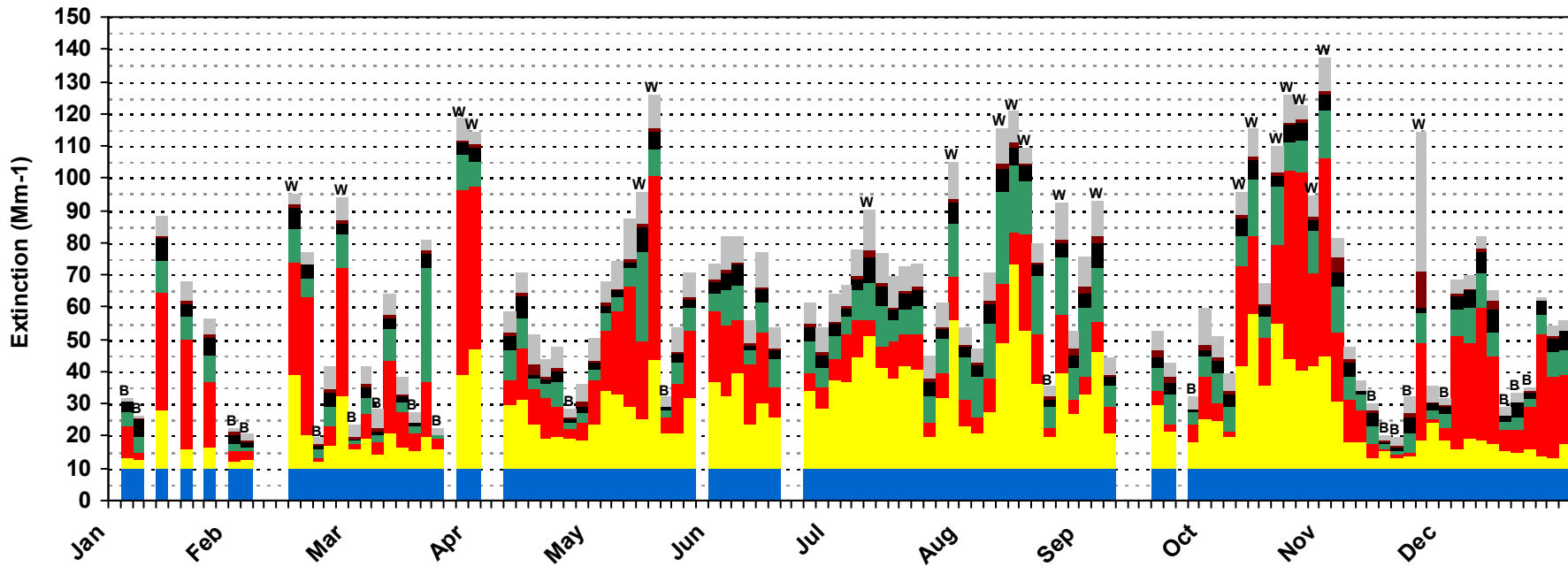
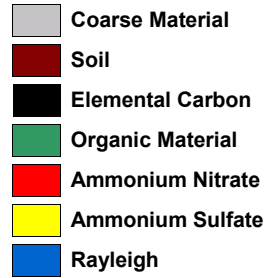
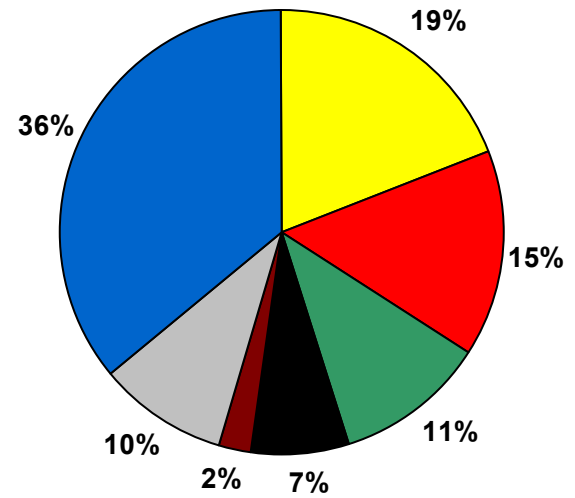
MONITORING DATA

**Agua Tibia Wilderness Area, CA
2002 Reconstructed Extinction
AGT11 Monitoring Data (every third day)**

20% Worst Visibility Days
Total Extinction = 109 Mm-1 (90 to 137 Mm-1)



20% Best Visibility Days
Total Extinction = 28 Mm-1 (19 to 35 Mm-1)



MONITORING DATA

Agua Tibia Wilderness Area, CA 2002 Reconstructed Extinction Values AGTI1 Monitoring Data (every third day)

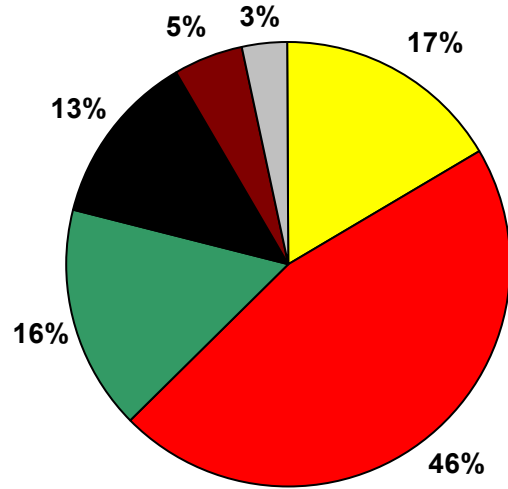
| 20% Worst Visibility Days | | | |
|-----------------------------|-----------------|----------------------|----------------------|
| | Average (Mm-1) | Minimum (Mm-1) | Maximum (Mm-1) |
| Total Extinction: | 109.0 (23.9 dv) | 90.3 (22.0 dv) | 137.5 (26.2 dv) |
| Aerosol Extinction*: | 99.0 | 80.3 | 127.5 |
| | Average (Mm-1) | % of Tot. Extinction | % of Aer. Extinction |
| Ammonium Sulfate: | 34.7 | 32% | 35% |
| Ammonium Nitrate: | 32.7 | 30% | 33% |
| Organic Material: | 14.6 | 13% | 15% |
| Elemental Carbon: | 5.3 | 5% | 5% |
| Soil: | 1.6 | 1% | 2% |
| Coarse Material: | 10.1 | 9% | 10% |
| Rayleigh: | 10.0 | 9% | N/A |
| 20% Best Visibility Days | | | |
| | Average (Mm-1) | Minimum (Mm-1) | Maximum (Mm-1) |
| Total Extinction: | 27.8 (10.2 dv) | 19.5 (6.7 dv) | 35.5 (12.7 dv) |
| Aerosol Extinction*: | 17.8 | 9.5 | 25.5 |
| | Average (Mm-1) | % of Tot. Extinction | % of Aer. Extinction |
| Ammonium Sulfate: | 5.4 | 19% | 30% |
| Ammonium Nitrate: | 4.1 | 15% | 23% |
| Organic Material: | 3.1 | 11% | 17% |
| Elemental Carbon: | 2.0 | 7% | 11% |
| Soil: | 0.6 | 2% | 3% |
| Coarse Material: | 2.6 | 9% | 15% |
| Rayleigh: | 10.0 | 36% | N/A |

*Excludes Rayleigh Extinction

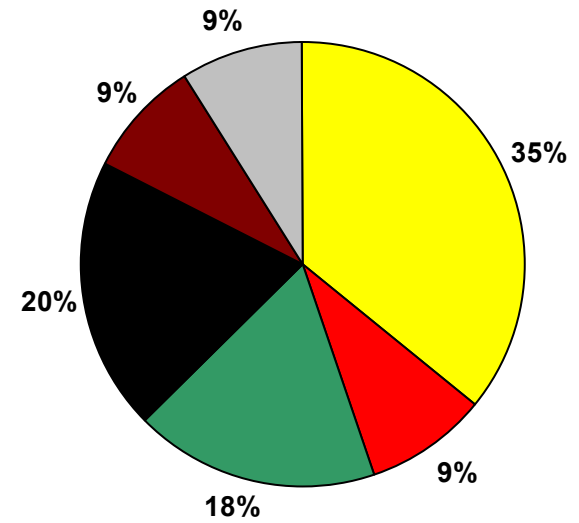
MODEL RESULTS

Agua Tibia Wilderness Area, CA 2002 Reconstructed Extinction CMAQ Model Results (every day)

20% Worst Visibility Days
Aerosol Extinction* = 102 Mm⁻¹ (77 to 219 Mm⁻¹)

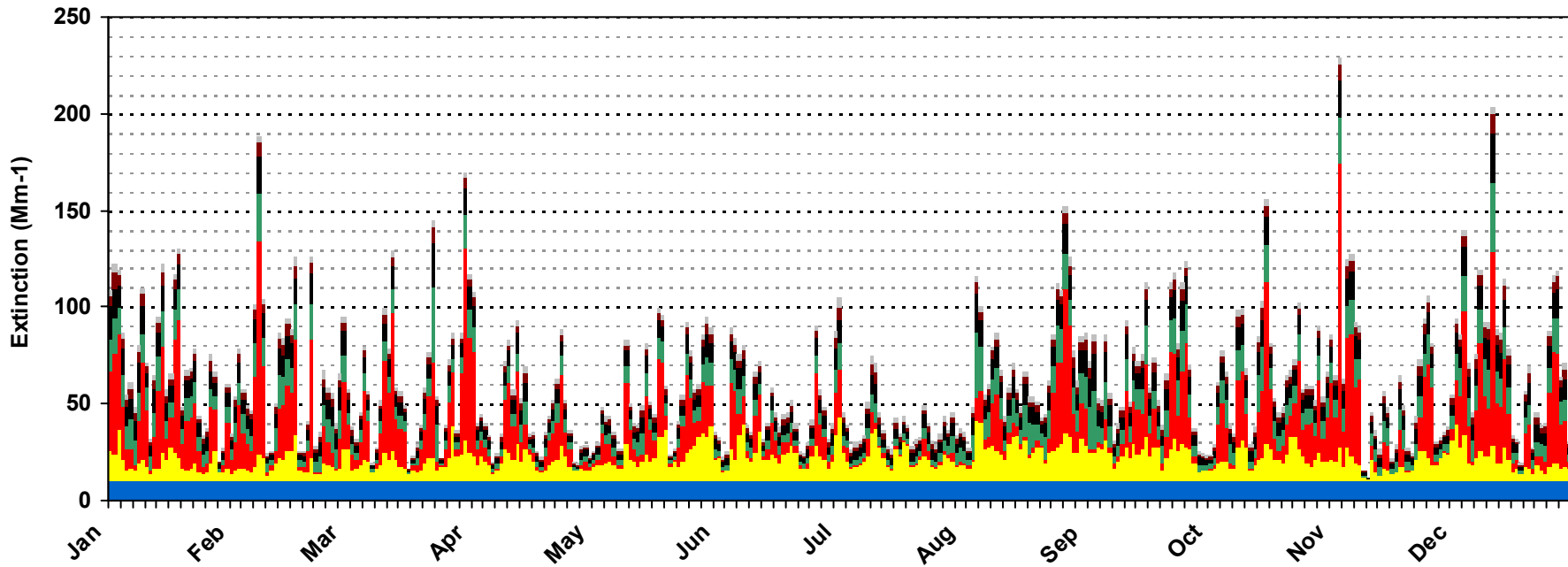


20% Best Visibility Days
Aerosol Extinction* = 17 Mm⁻¹ (2 to 24 Mm⁻¹)



- Coarse Material
- Soil
- Elemental Carbon
- Organic Material
- Ammonium Nitrate
- Ammonium Sulfate
- Rayleigh

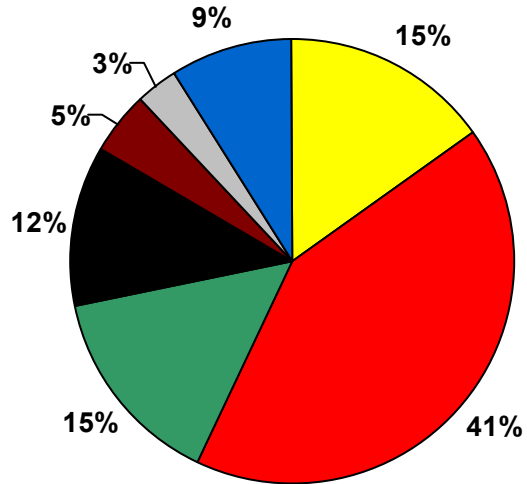
*Excludes Rayleigh Extinction



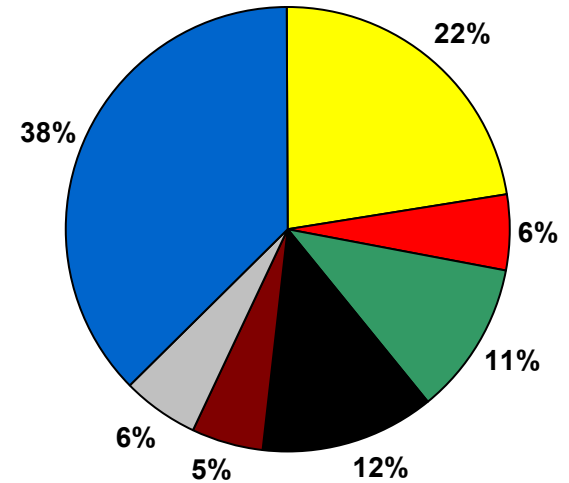
MODEL RESULTS

Agua Tibia Wilderness Area, CA 2002 Reconstructed Extinction CMAQ Model Results (every day)

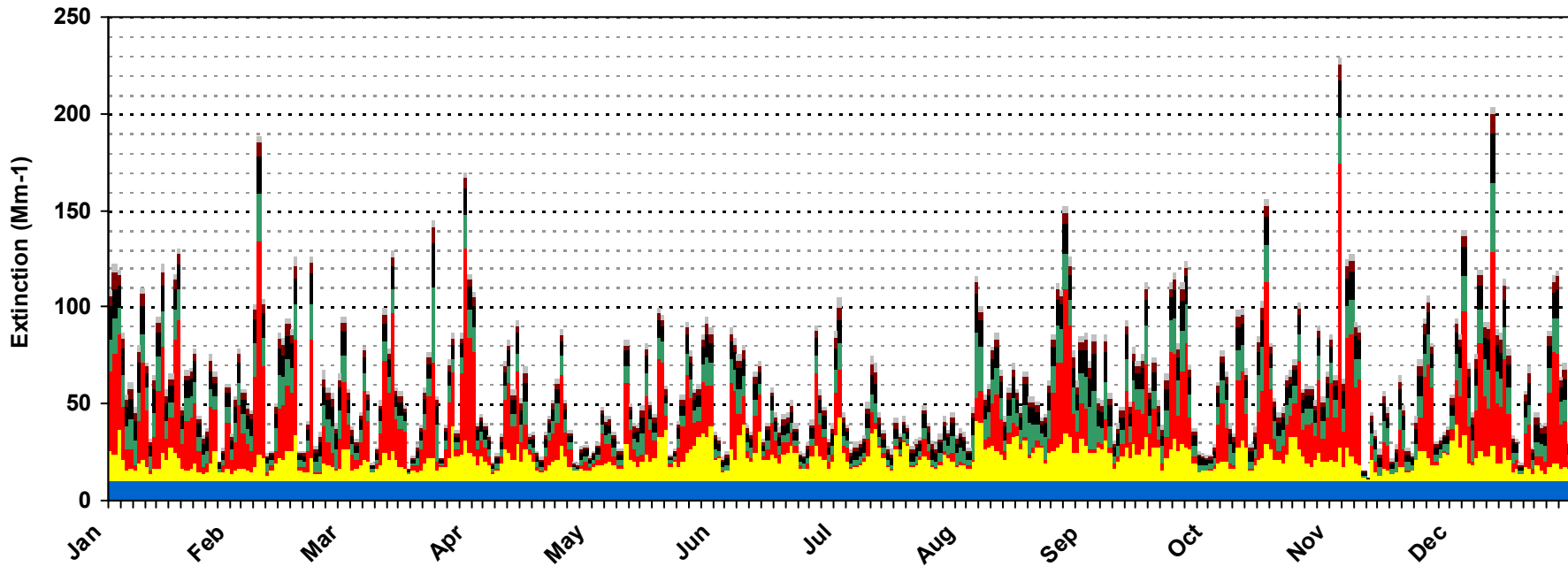
20% Worst Visibility Days
Total Extinction = 112 Mm-1 (87 to 229 Mm-1)



20% Best Visibility Days
Total Extinction = 27 Mm-1 (12 to 34 Mm-1)



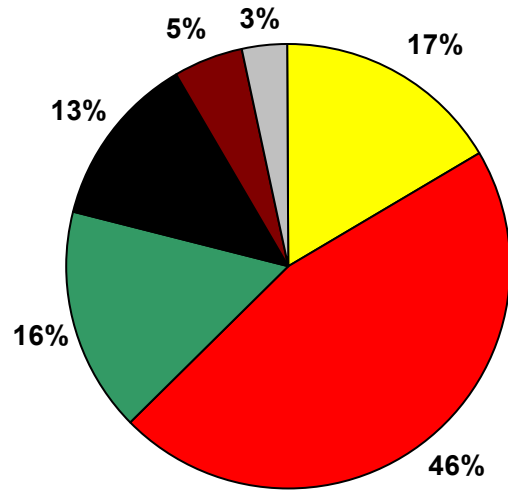
- Coarse Material
- Soil
- Elemental Carbon
- Organic Material
- Ammonium Nitrate
- Ammonium Sulfate
- Rayleigh



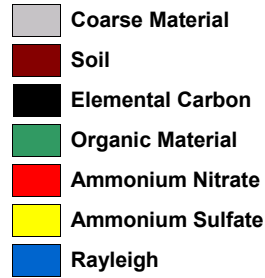
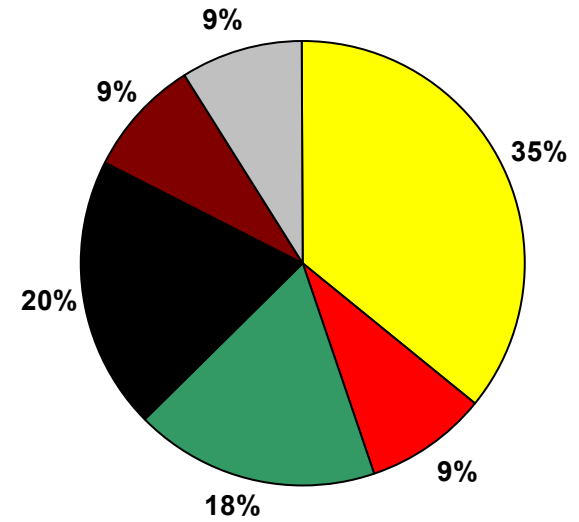
MODEL RESULTS

Agua Tibia Wilderness Area, CA 2002 Reconstructed Extinction CMAQ Model Results (every day)

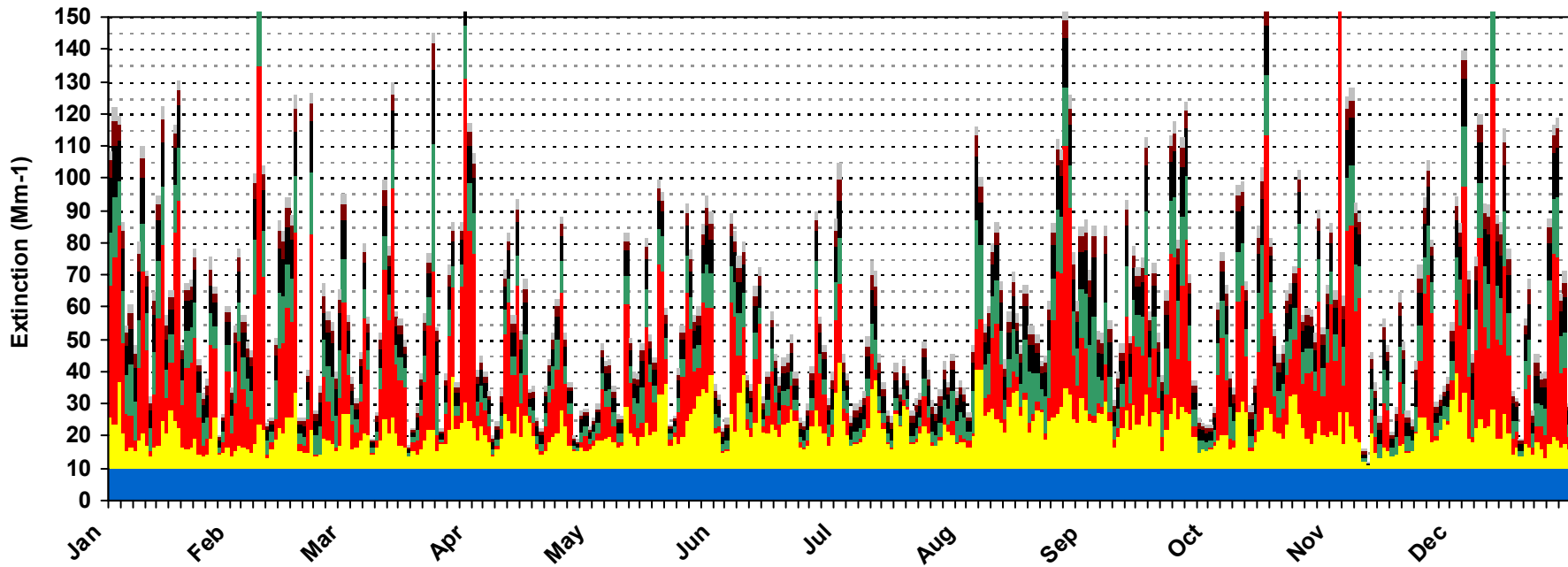
20% Worst Visibility Days
Aerosol Extinction* = 102 Mm-1 (77 to 219 Mm-1)



20% Best Visibility Days
Aerosol Extinction* = 17 Mm-1 (2 to 24 Mm-1)



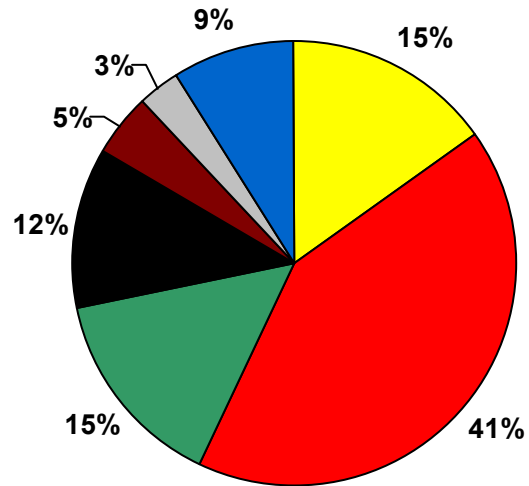
*Excludes Rayleigh Extinction



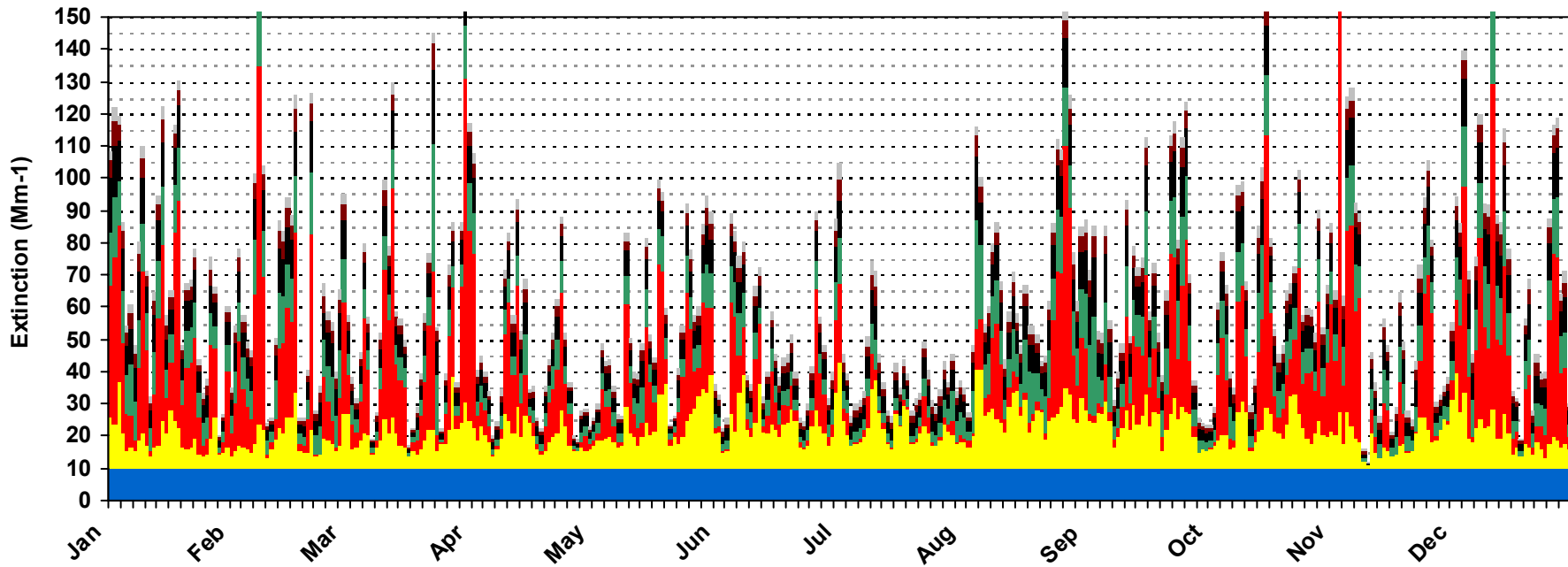
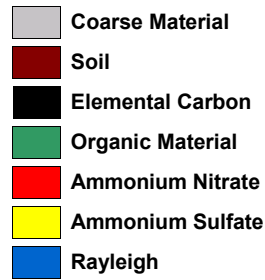
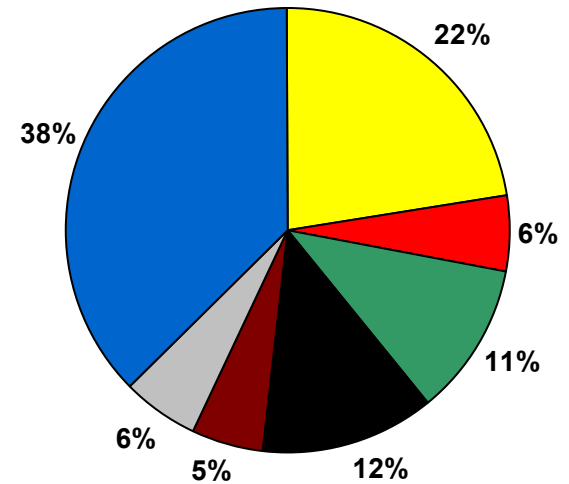
MODEL RESULTS

Agua Tibia Wilderness Area, CA 2002 Reconstructed Extinction CMAQ Model Results (every day)

20% Worst Visibility Days
Total Extinction = 112 Mm-1 (87 to 229 Mm-1)



20% Best Visibility Days
Total Extinction = 27 Mm-1 (12 to 34 Mm-1)



MODEL RESULTS

Agua Tibia Wilderness Area, CA 2002 Reconstructed Extinction CMAQ Model Results (every day)

| 20% Worst Visibility Days | | | |
|----------------------------------|-----------------------|-----------------------------|-----------------------------|
| | Average (Mm-1) | Minimum (Mm-1) | Maximum (Mm-1) |
| Total Extinction: | 111.8 (24.1 dv) | 86.6 (21.6 dv) | 229.3 (31.3 dv) |
| Aerosol Extinction*: | 101.8 | 76.6 | 219.3 |
| | Average (Mm-1) | % of Tot. Extinction | % of Aer. Extinction |
| Ammonium Sulfate: | 17.1 | 15% | 17% |
| Ammonium Nitrate: | 46.7 | 42% | 46% |
| Organic Material: | 16.4 | 15% | 16% |
| Elemental Carbon: | 13.0 | 12% | 13% |
| Soil: | 5.3 | 5% | 5% |
| Coarse Material: | 3.3 | 3% | 3% |
| Rayleigh: | 10.0 | 9% | N/A |
| 20% Best Visibility Days | | | |
| | Average (Mm-1) | Minimum (Mm-1) | Maximum (Mm-1) |
| Total Extinction: | 26.7 (9.8 dv) | 12.1 (1.9 dv) | 34.1 (12.3 dv) |
| Aerosol Extinction*: | 16.7 | 2.1 | 24.1 |
| | Average (Mm-1) | % of Tot. Extinction | % of Aer. Extinction |
| Ammonium Sulfate: | 6.0 | 22% | 36% |
| Ammonium Nitrate: | 1.5 | 6% | 9% |
| Organic Material: | 3.0 | 11% | 18% |
| Elemental Carbon: | 3.3 | 12% | 20% |
| Soil: | 1.4 | 5% | 9% |
| Coarse Material: | 1.5 | 6% | 9% |
| Rayleigh: | 10.0 | 37% | N/A |

*Excludes Rayleigh Extinction