



DATA SUPPORT SYSTEM UPDATE – EDMS

September 30, 2008

STATUS

KEY FUNCTIONS

- House Emissions Inventory Data for all WRAP region States and Tribes
- Present summary data via Standard Reports and an Ad-Hoc Query tool. Data are presented at the county, facility or tribal level by SCC and pollutant
- Spatial tool provides geographic/tabular data for a selected area

<http://www.wrapedms.org>

Ongoing support and development for the EDMS is provided by Air Resource Specialists and Air Sciences, under the direction of WRAP's Emissions Forum. The EDMS is a data repository for all emissions data provided by WRAP States and Tribes. This includes a complete 2002 Inventory, including Fire Data, and a complete 2018 Projected Inventory. The 2005 data are loaded into the EDMS as they become available. EDMS currently contains the following 2005 data:

- Alaska: point source
- Maricopa County (AZ): on-road mobile, non-road mobile, point source
- Colorado: point source
- Idaho: area, on-road mobile, non-road mobile, point source
- Nevada: non-road mobile
- Washington: point source
- Fort Peck: area, non-road mobile, point source

System Users	WRAP Association	Nature of Use	Level of Use
Air Quality Planners and Analysts	IWG, EF, TAF	QA/QC; EIs; SIPs;	Periodic
States/Tribes/F LMs/EPA		Tracking Progress	Periodic
Consultants		EIs	Periodic

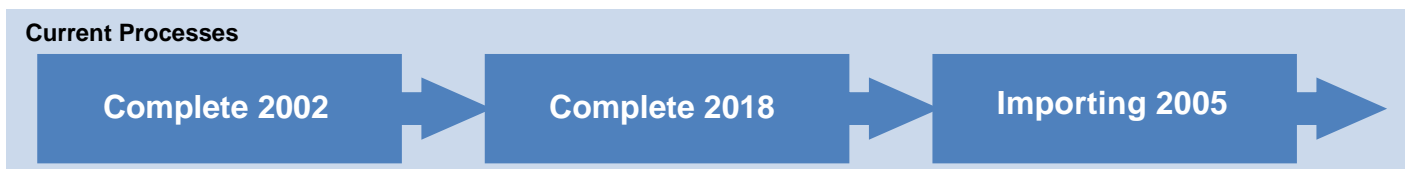
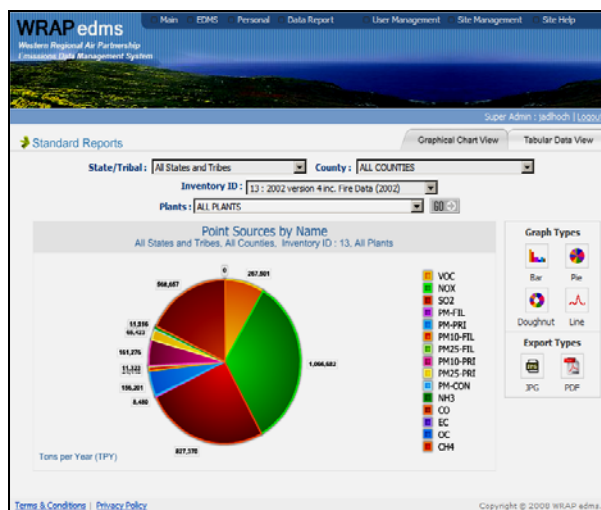
WORK COMPLETED IN THE LAST 12 MONTHS

Recent development work on the EDMS has focused primarily on data quality control and uploads, and system integrity.

- Developed QC and data upload procedures
- Uploaded Fire data in its native resolution
- Completed the 2002 and 2018 inventories
- Uploaded 2005 inventories for states and tribes
- Improved database structure and integrity
- Improved look and function of Standard Reports, including creation of fire data reports
- Added BART designation to individual facilities
- Addressed many non-functioning areas of the web application

Regional Haze Plan Support

The EDMS represents a consistent methodology for accounting for, storing, and retrieving emissions data in the Western U.S. WRAP states are currently using EDMS data to support their Regional Haze SIPs. With the addition of 2005 data, it will soon be possible to track progress in emissions reductions with the EDMS.



NEXT STEPS

REDEFINE THE EDMS PHILOSOPHY

The EDMS will change from a stand-alone database and web application to an integrated component of the TSS.

EDMS DATABASE

The EDMS database will remain the primary emissions data repository for WRAP, but will not be directly accessible by users.

DEVELOPMENT OF NEW EDMS WEB PAGE

The EDMS website will be revised in scope to present:

- Project background information
- Detailed data inventory description
- Contact and user help information
- Links to EDMS data retrieval on the TSS

DATA PRESENTATIONS ON TSS

The TSS will provide a platform for review and presentation of EDMS data. This new paradigm will allow for direct comparisons between native EIs and emissions modeling data. The integration of EDMS and TSS is expected to be completed by Spring 2009.

NEW MAPPING TOOL

A new mapping tool (Google Maps) will be developed on the TSS to:

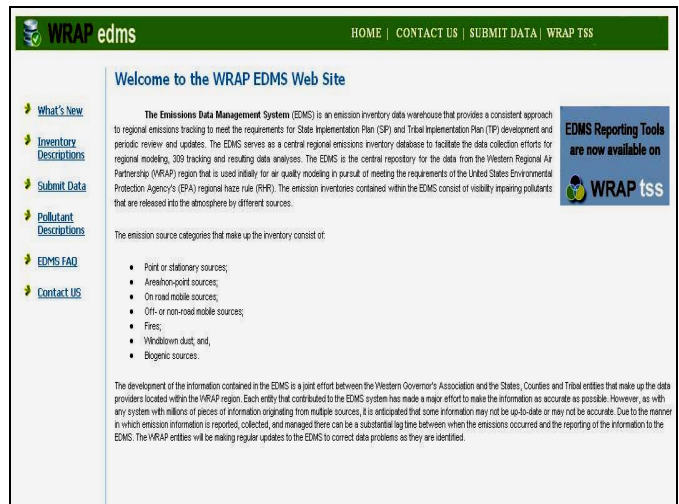
- Show locations of point sources and state/county/tribal boundaries
- Retrieve summary emissions data by location
- Calculate distances from facilities to Class I areas

Connections with Future RMC and EPA Data Systems

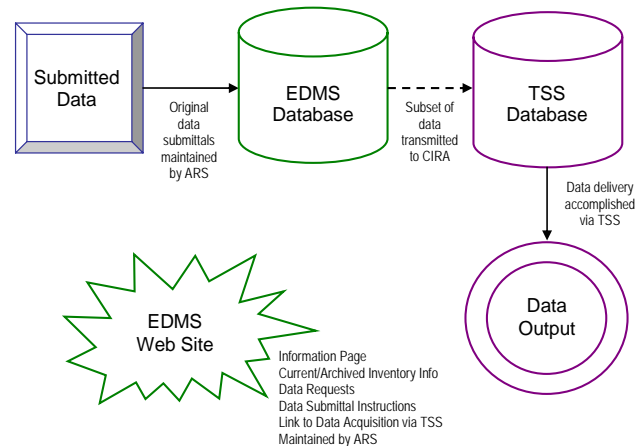
The EDMS will be the source for emissions data for future regional modeling efforts.

Adding future inventories, the EDMS will become a tool for tracking trends in air quality control in the WRAP.

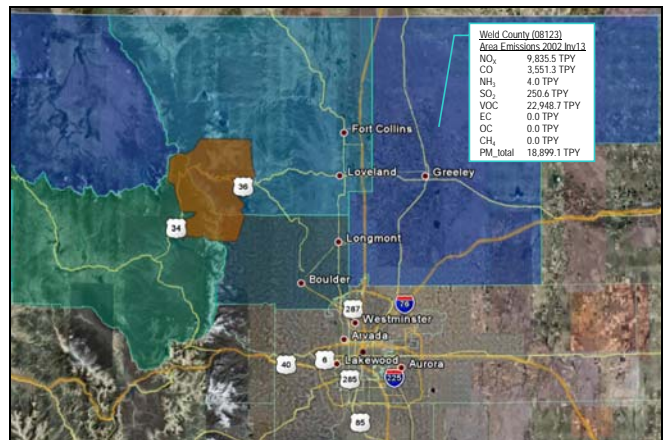
The EDMS will continue to support and develop data submittal procedures in line with EPA's National Emissions Inventory (NEI), and soon to be released Consolidated Emissions Reporting Schema (CERS).



New WRAP EDMS Web Site Home Page



Future Integration of EDMS and TSS - the EDMS database will remain an independent repository; the TSS will access EDMS data and provide data presentation tools; the EDMS web site will be revised to present project information only.



Future Processes

Connect EDMS To TSS

Align with NEI: Gather Future Inventories

Track Emissions Reductions

