

Guidance for Categorizing Natural vs. Anthropogenic Fire Emissions

Follow-up Task from WRAP to

Policy for Categorizing Fire Emissions

WRAP Fire Emissions Joint Forum

WRAP Board Meeting November 10, 2004
Salt Lake City, Utah

WRAP Policy for Categorizing Fire Emissions

- WRAP Approved by Consensus November 15, 2004
- IOC Transmittal Letter to the WRAP
 - The FEJF needs to ensure that the following items are considered and clarified during the development of those policy and technical tools [necessary to implement the GCVTC Recommendations and meet the requirements of the RHR]:
 - 2. The distinction between “ecosystem maintenance” and “ecosystem restoration” burning and how they relate to “natural” and “anthropogenic” classifications.

FEJF “Natural” vs. “Anthropogenic” Task Team

- Chair – Bob Habeck, Montana DEQ
- Participants
 - BLM: Lisa Bye
 - NPS: Brian Mitchell
 - USFS: Pete Lahm, Suraj Ahuja, Jason Jerman, Christi Gordon, Don McKenzie, Jim Russell
 - State: Darla Potter (WDEQ), Mike Ziolko (ODF)
 - NTEC: Cathy Messerschmidt
 - Timber Industry: Scott Kuehn

Guidance for Categorizing Natural vs Anthropogenic Fire Emissions

- The Guidance seeks to develop a methodology to categorize fire emissions as either “natural” or “anthropogenic” in order to provide a basis for fire’s inclusion in natural background condition values and for tracking reasonable progress goals toward the 2064 natural conditions goal.

Guidance for Categorizing Natural vs Anthropogenic Fire Emissions

- The Guidance identifies categorization methods to be used by burners and regulators when categorizing fire emissions as either “natural” or “anthropogenic.”
 - Consistent Research
 - Field Procedures
 - Maps
 - Management Plans

All Fire Types

- Wildfire
 - Suppressed by Management Action
 - Managed for Resource Objectives
 - Escaped Prescribed Fire
- Prescribed Fire
 - Ecosystem Maintenance
 - Ecosystem Restoration & Other Purposes
- Native American Cultural Burning
 - Traditional, Religious, and Ceremonial Purposes

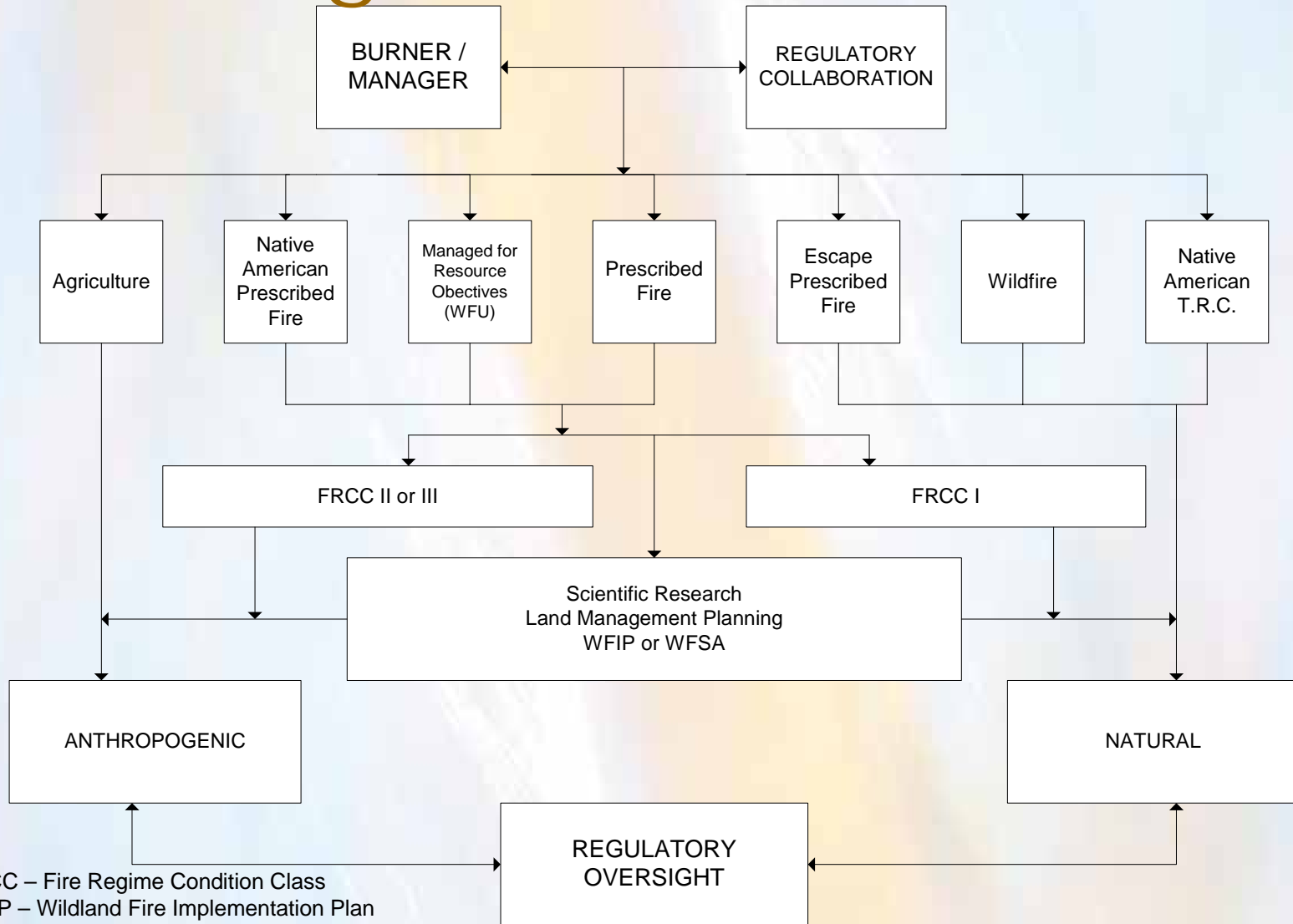
Guidance for Categorizing Natural vs Anthropogenic Fire Emissions

- Guidance provides support to the categorization process recognizing:
 - Spatial / Temporal variability
 - Landscape to Burn Unit scale
 - Daily Basis to Burn Accomplishment Reports
 - Significance in determining natural background condition values
 - Tracking reasonable progress goals

Fire Regime Condition Class (FRCC)

- An interagency, standardized tool for determining the degree of departure from reference condition vegetation, fuels and disturbance regimes. Assessing FRCC can help guide management objectives and set priorities for treatments.
- Federal and many state lands being assessed using this rating system.
- Used to demonstrate progress to restore wildland ecosystems on a national scale to Congress.

Categorization Process



FRCC – Fire Regime Condition Class
WFIP – Wildland Fire Implementation Plan
WFS – Wildfire Situation Analysis

TABLE 1

CATEGORIZATION METHODS FOR ANTHROPOGENIC AND NATURAL EMISSIONS

FIRE TYPE	“ANTHROPOGENIC” METHODS	“NATURAL” METHODS
Prescribed Fire	<ul style="list-style-type: none"> • Fire regime condition - Class II or III. http://www.frcc.gov/ 1. Standard Landscape Method. - OR - 2. Landscape Scorecard Method. 	<ul style="list-style-type: none"> • Fire regime condition - Class I. http://www.frcc.gov/ 1. Standard Landscape Method. - OR - 2. Landscape Scorecard Method.
Rangeland Fire	<ul style="list-style-type: none"> • Scientific research, including, but not limited to: University publications; research facility bulletins or papers; professional society publications; or credible contracted services. 	<ul style="list-style-type: none"> • Scientific research, including, but not limited to: University publications; research facility bulletins or papers; professional society publications; or credible contracted services.
Native American Prescribed Fire	<ul style="list-style-type: none"> • Fire Management Plan and other land management planning documents. 	<ul style="list-style-type: none"> • Fire Management Plan and other land management planning documents.
Managed for Resource Benefits (WFU)	<ul style="list-style-type: none"> • Wildland Fire Implementation Plan (WFIP). Wildfire Situation Analysis (WFSA). 	<ul style="list-style-type: none"> • Wildland Fire Implementation Plan (WFIP). • Wildfire Situation Analysis (WFSA).
Agricultural	<ul style="list-style-type: none"> • All activities meeting the definition of PL 104-127, Section 1240A. 	<ul style="list-style-type: none"> • Not applicable.
Wildfire	<ul style="list-style-type: none"> • Not applicable. 	<ul style="list-style-type: none"> • Wildfire Implementation Plan (WFIP). • Wildfire Situation Analysis (WFSA). • Fire Management Plan.
Escaped Prescribed Fire	<ul style="list-style-type: none"> • Not applicable. 	<ul style="list-style-type: none"> • Wildland Fire Situation Analysis – WFSA. • Fire Management Plan.
Native American Traditional, Cultural, or Religious	<ul style="list-style-type: none"> • Not applicable. 	<ul style="list-style-type: none"> • Identified through tribal government resolution, rule, or ordinance.

Review Process

- Task Team Development and Review
 - Six document versions
- Directed Outreach / Targeted Review
 - Timber Industry stakeholders
 - Tribal stakeholders and NTEC
 - FEJF members
 - Compiling comments
 - All editorial
- Final FEJF action at December meeting



WRAP Policy for Categorizing Fire Emissions

- “Natural”
 - Wildfire
 - Prescribed fire (including WFU) for ecosystem maintenance
 - Native American Cultural Burning for traditional, religious, and ceremonial purposes
- “Anthropogenic”
 - Prescribed fire (including WFU) for any purpose except ecosystem maintenance